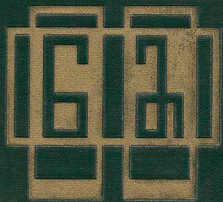
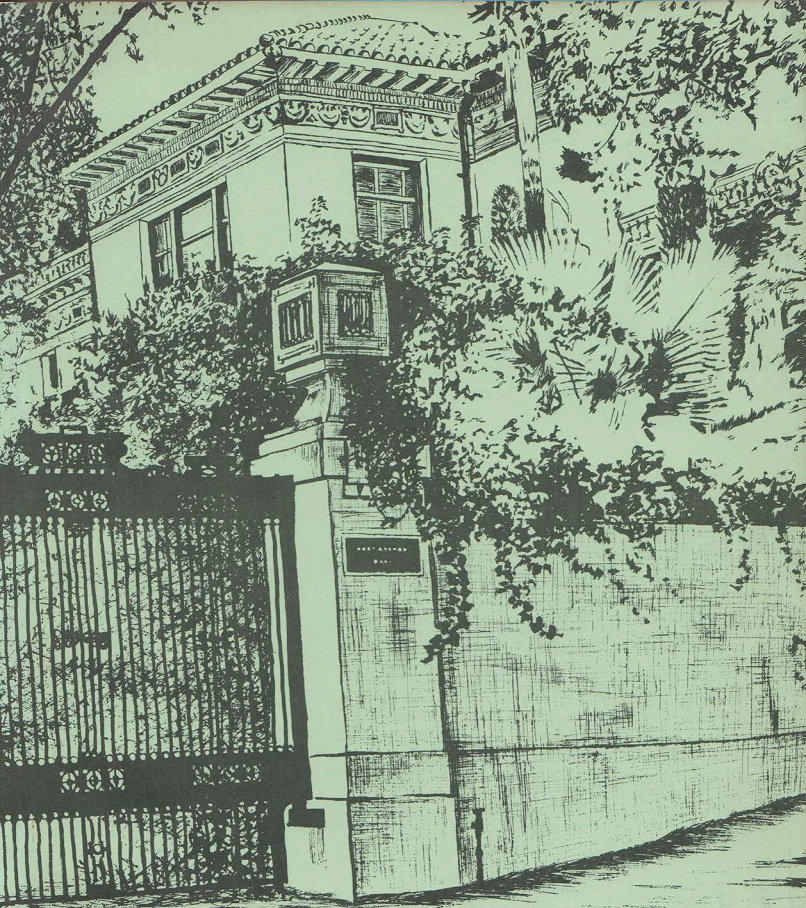


ENVOY







Name.....

THE ENVOY

A full-page photograph showing the silhouettes of four people sitting on a beach, looking out at the ocean during sunset. The sun is low on the horizon, creating a bright glow that reflects on the water and illuminates the clouds. In the background, a range of mountains is visible under the twilight sky. The overall mood is peaceful and contemplative.

The channel crossing to Catalina Island from San Pedro Bay is a must for every landlubber from the Los Angeles area who craves just a bit of the thrill of the sea. The moment of sunset finds our returning Ambassador students absorbed in the changing panorama of the western sky.

AMBASSADOR COLLEGE

Pasadena, California . . . and
Bricket Wood, Herts., England

Oceans apart, yet united in a unique concept in liberal arts education. Two colleges now brought within your reach in pictorial tour form. Quiet residential Terrace Drive in Pasadena presents our first view, a view that comes as a surprise to one chancing upon the campus un-awares. Your formal tour, however, will begin at the 363 Grove Street address. A brief glimpse of the busy offices in the Administration Building and then . . .

Walk with

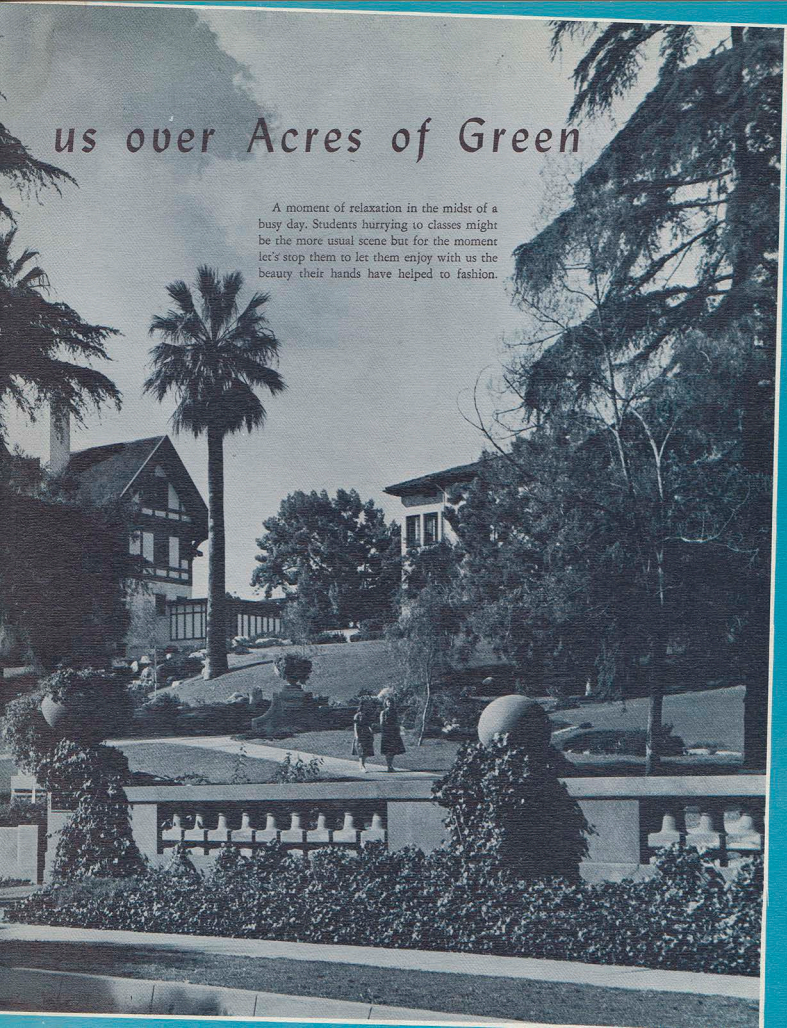
TOUR GUIDE

Administration Building	6
Library	10
Radio Studio	12-16
Garden Theatre	44
Menor Del Mar	14, 56
Assembly Hall	59-61
Athletic Field	62
Stream Views	78
Mayfair and Terrace Villa	78-93
Campus Activities	30, 94, 114
Ambassador Hall	116-123
Squaw Valley	124-129
A Texas Welcome	130-177
Bricket Wood, England	180
Meet Our Ministers	186-193
Ambassador College Press	198-199
College Directory	

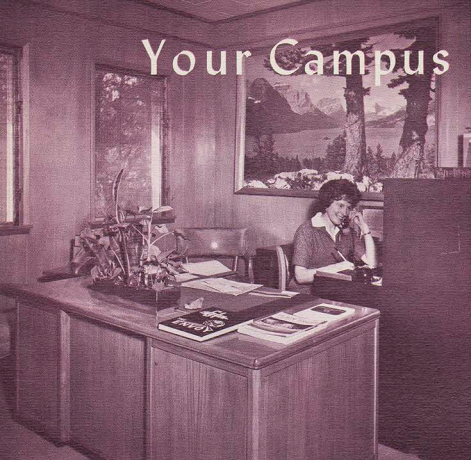
NO
PARKING
AT ANY

us over Acres of Green

A moment of relaxation in the midst of a busy day. Students hurrying to classes might be the more usual scene but for the moment let's stop them to let them enjoy with us the beauty their hands have helped to fashion.

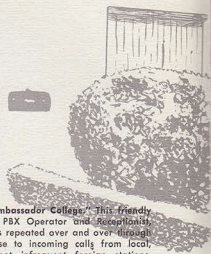


Your Campus



Tour begins

ADMINISTRATION



"Good Morning, Ambassador College." This friendly greeting from our PBX Operator and Receptionist, Karen Armstrong, is repeated over and over through the day in response to incoming calls from local, nation-wide and not infrequent foreign stations. Campus calls between some 150 phones are handled by automatic equipment providing the fast, efficient service needed for a tightly knit organization.

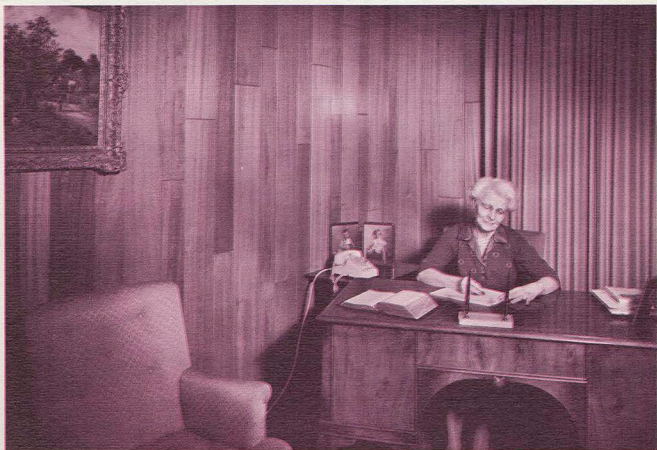


"May I help you?" Able secretaries to offices on the lower floor and friendly, courteous receptionists to the stranger, faculty member and student alike. Ask their aid in contacting any of our campus personnel. A short wait in this mahogany paneled setting and a conductor for your tour will arrive.

at the Administration Building



The office of Mr. Vern Mattson — setting for business conferences where decisions are made affecting the growth of Ambassador College and the World Tomorrow radio broadcast emanating from the campus.



At the foot of the stairway is the office of the Guidance Counselor of Women. Ambassador's co-eds, and young men too, find occasion to seek the advice of Mrs. Armstrong. Her door is always open to them and her counsel greatly appreciated.

"Knowledge is of Value Only as You Put It to Use!"

Originally serving as the main classroom building of Ambassador College, the Library now attains its intended function. Researchers draw daily from its thousands of hand-picked volumes, the factual material of man's six thousand year attempt to live an abundant, successful life on this planet.





Fifteen thousand volumes at your fingertips and assistance from librarians to locate the information you need. Original paintings of world famous painters Hobema, Bierstadt, Knight and Rembrandt are among the works of art that grace the library walls. Sunlight pouring through these huge windows imparts a cheerful air to the reception hall



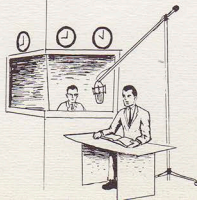
Plush Oriental carpets, richly stained walnut paneling and massive study tables ensure a quiet, relaxing study area. Encyclopedias, lexicons, commentaries, current issues of national and international newspapers and magazines are the source material for class assignments and research.

"Ambassador College presents

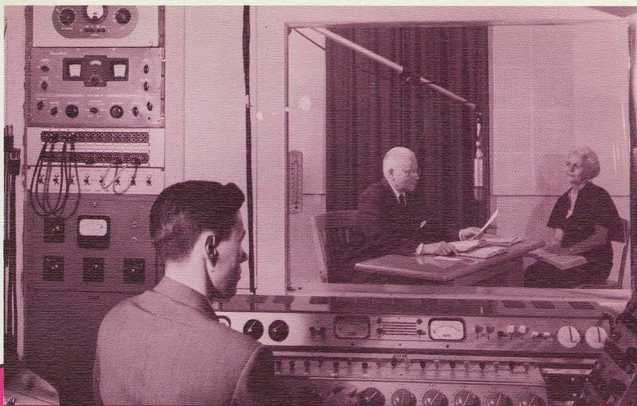
Surging ahead with its unprecedented 30% yearly increase, the WORLD TOMORROW has grown to be the most powerful voice in radio. Foreign broadcasts in English, French, German, and Spanish add to a world-sweeping coverage. The phenomenal growth of the WORLD TOMORROW broadcast in these past two decades now speeds God's message to an audience of FIFTEEN MILLION!

NORMAN SMITH

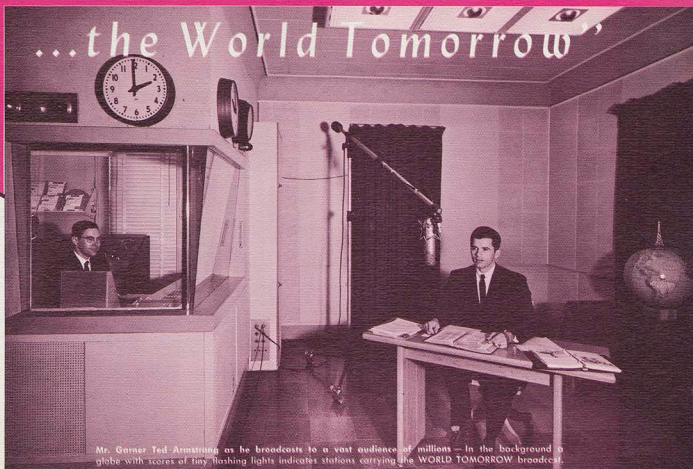
Director of Radio Production . . . A.B., Ambassador College.



A view from the Dubbing Room — giant Ampex recorders whirl, each making its own magnetic tape recording, as the radio broadcast goes out direct to local stations from the Ambassador College Campus. Multiple magnetic tape reproductions from these instruments are sent to 140 stations, covering the nations.



"Well, greetings, friends..." Mr. Herbert W. Armstrong, with his devoted wife Loma at his side, begins another WORLD TOMORROW broadcast. Modern control-room equipment helps speed the engrossing program to all continents of the world.



Mr. Garner Ted Armstrong as he broadcasts to a vast audience of millions — In the background a globe with scores of tiny flashing lights indicates stations carrying the WORLD TOMORROW broadcast.

The World Tomorrow

Heard

A dynamic voice that grew, a driving message to a chaotic world, a foretaste of things to come. This and much more is the World Tomorrow broadcast. One hundred forty strong radio stations daily reach out . . .

Message

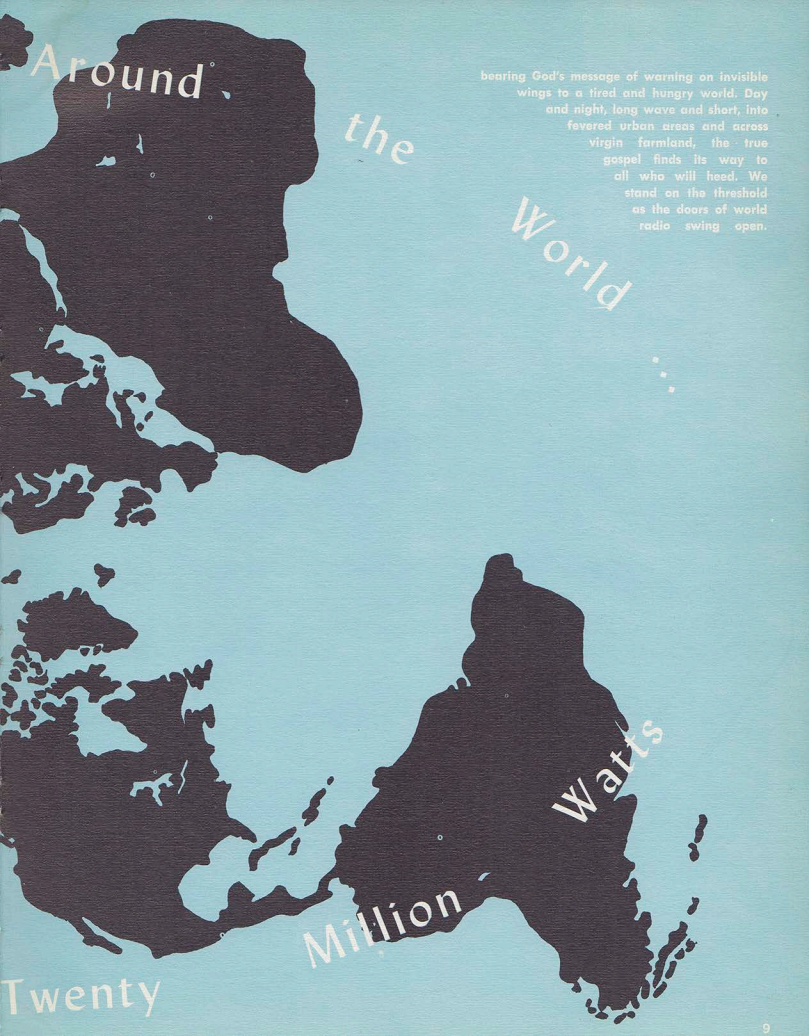
The

with

a

growing



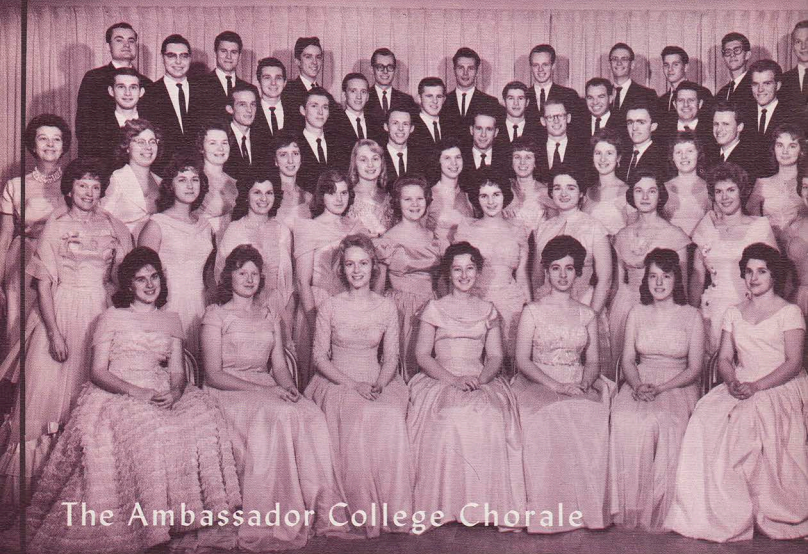


Around the

World

bearing God's message of warning on invisible wings to a tired and hungry world. Day and night, long wave and short, into fevered urban areas and across virgin farmland, the true gospel finds its way to all who will heed. We stand on the threshold as the doors of world radio swing open.

Twenty Million Watts



The Ambassador College Chorale

Ambassador College Chorale: (left to right) Front Row: Joanne Pfund, Carolyn Travis, Garnett Ziska, Madeleine Bansemer, Mary Ellen Crittenden, Esther Shrewsbury, Ginger Bramhall, Rebekah Stanton.

Second Row: Karen Armstrong, Carol Nestor, Beverly Baird, June Steensen, Paula Hegvald, Mary Ann Williams, Patsy Riegel, Donna Fink, Kay Wiley, Peggy Lachner, Linda Ervin.

Third Row: Mrs. Dorothy Williams (Accompanist), Nancy Kiser, Aldah Lindgren, Jan Rubin, Carol Judy, Sharon Hedge, Ivy Edelmach, Terry Smith, Judy Olsen, Joyce Sefcak, Barbara Ochs, Mr. Leon Ettinger (Director).

Fourth Row: Larry Altergott, William Swanson, Gary Prather, George Kemnitz, Ronald Miller, Anthony Buzzard, Graham Davies, Robert Salmon, Allen Merager, John D. Schroeder, Gary Ervin.

Fifth Row: David Halpain, Walter Sharp, Robert Dick, Gerald Witte, Marvin Lindsey, Ray Dick, Robert Steep, Rowlen Tucker.

Back Row: David Bierer, Charles Crain, Lance Johnson, LeRoy Diem, Morgan Olsen, Dennis Pyle, C. Roy Hunter, Ivan Sell, Wayne Dunlap, David Albert, Loyd Hohertz, Jim Rudometkin.

The Ambassador Chorale is heard at local churches near the college throughout the year and journeyed to Texas for the fall festivals. Singing both sacred and secular music, this energetic group has delighted audiences with such performances as Handel's "Messiah," and the Broadway musical "South Pacific." A small group, the Octet, has been selected from Chorale members and under the direction of Mr. Anthony Buzzard performs for the circuit of churches in Southern California.



Ambassador College Orchestra: Conductor, Russell Reiner. Front Row: first string violin, Kathryn L. Meredith, Sally Davis, Joanne Pfund; second string violin, Joy Brian, Dwight D. Armstrong.

Second Row: base viol, Gary Prather; bassoon, Mary Ellen Crittenden; flute, Sharon Shepard; oboe, Anthony Buzzard; clarinet, Karen Tharp, Connie Boone.

Third Row: pianist, Susan Armstrong; trumpet, Leonard Robinson, Patsy Riegel; French horn, Charlene Diem, Barbara Oaks.



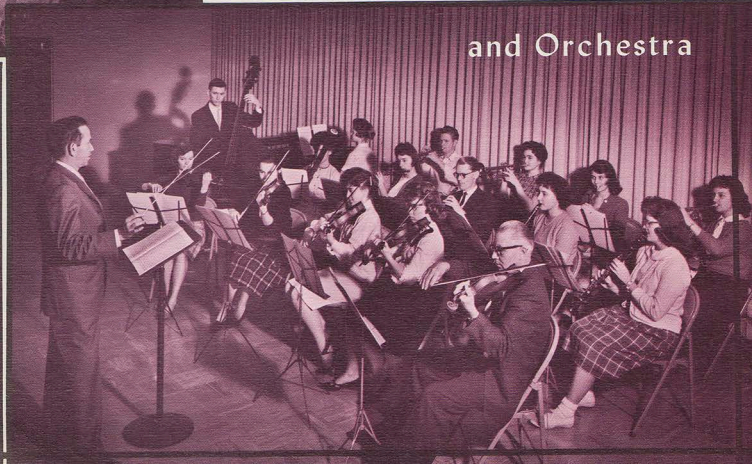
A Musical Introduction

Outstanding in the memory of those attending the 1961 Commencement was the Processional March played by the Ambassador College Orchestra—the moment when graduates and faculty are marching slowly, single file toward the Tempio to take their places for the graduation ceremony. The selection "Pomp and Circumstance" was chosen for this occasion of the year. Just prior to the Commencement Address, the Ambassador Chorale presented "Alleluia" by Randall Thompson. Return with us to the moments of the 1961 Commencement Exercises as our tour pauses in the Lower Gardens and relive the day when graduates of Ambassador College commence a life of service to their fellowman.



"One and two and . . ." as Mr. Russell Reiner leads the Ambassador Orchestra in a well-known piece, "Waltz of the Flowers."

and Orchestra



The setting, the garden





theater . . .

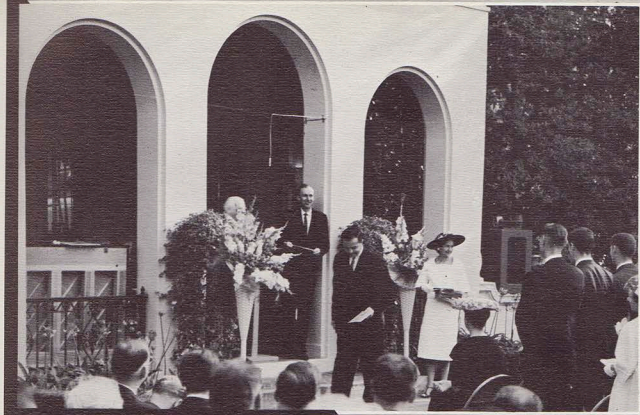
A palm stands sentinel over Ambassador's garden theater while cumulus clouds billow over nearby San Gabriel mountains. Hidden also by these clouds are the domes of world famous telescopes on Mount Wilson, which lies just beyond the Pasadena civic center pictured in the foreground. This secluded open air theater, shown here on a day in January, is the scene of activities throughout the year, chief of which is the commencement program.

. . . the time, early June

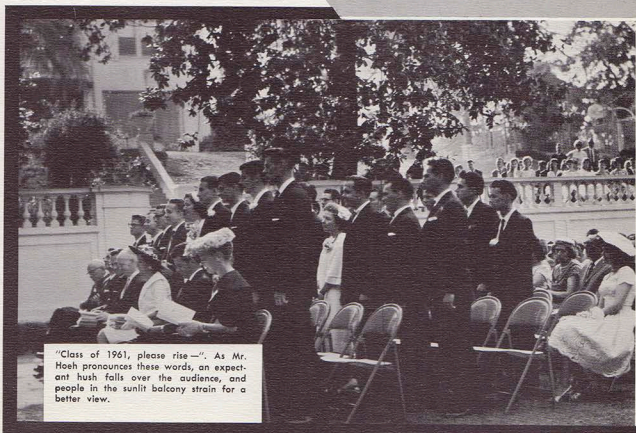
A Goal Achieved

The luxuriant beauty of the TEMPIETTO presents a unique and dramatic setting for graduation exercises. Mixed emotions of joy, solemnity, sadness, and longing expectations for the future prevail in the hearts of the graduates. Four active, joyful years of college life culminate with commencement, the beginning of a productive and enjoyable life as true Ambassadors.





As Dean Hoeh announces the graduates' names, they alertly step forward to receive their diplomas from the hand of Mrs. Martin. Next in store, a hearty handshake and congratulations for a job well done from President Armstrong.



"Class of 1961, please rise—". As Mr. Hoeh pronounces these words, an expectant hush falls over the audience, and people in the sunlit balcony strain for a better view.

The Origin

President Armstrong traces the history of education from its inception to the present.

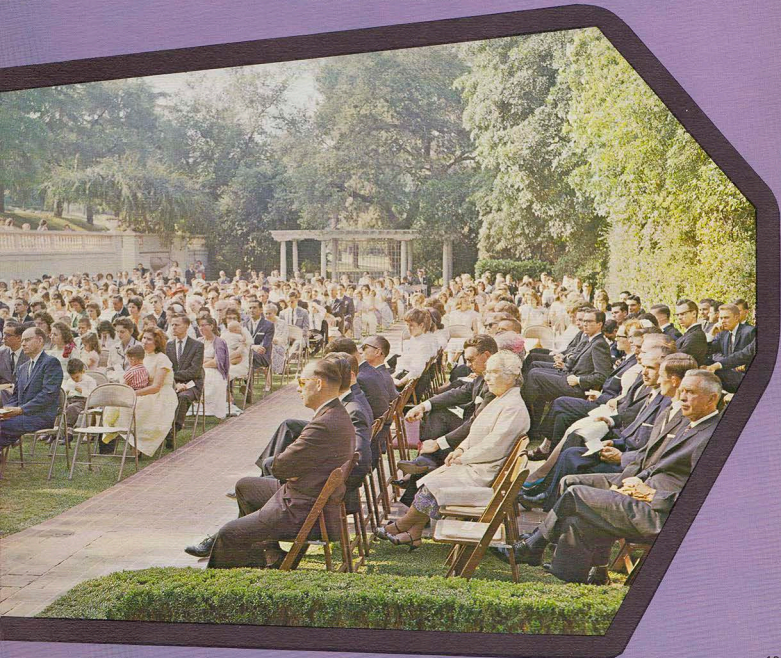


and Development of Education

President Armstrong

"An evil conspiracy is infusing diabolical leaven into the processes of disseminating knowledge... people are taught the lie of evolution... their minds are filled with materialism. The TRUE VALUES have been lost... scientists, as well as

educators, are themselves the product of this modern materialistic education. They are merely its victims. The same is true of heads of government. Truly, in such a world, the two Ambassador Colleges stand out as an oasis in the desert..."



Congratulations

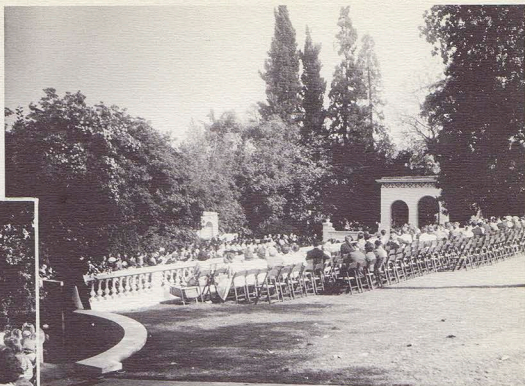
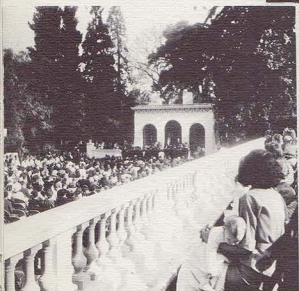


of Sixty One

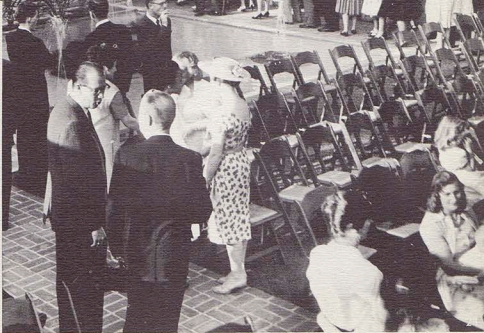
Above: A line of graduates marching as the AMBASSADOR ORCHESTRA plays the processional. Left: Graduates take their places in reserved rows before the TEMPIETTO. Below: The Faculty, which followed the graduates in procession, has now taken its place. A welcome from our President follows.



Class



Left: A view from the balcony. Above: Ambassador's terraced lawns provide an unusual outdoor setting for the occasion. Below: Congratulations are in order for a goal achieved.



KELLY HUGH BARFIELD
Ministerial Assistant,
Arkansas and Tennessee



WILBUR A. BERO
Local Elder



MERLE BOYES
Vancouver, B. C.



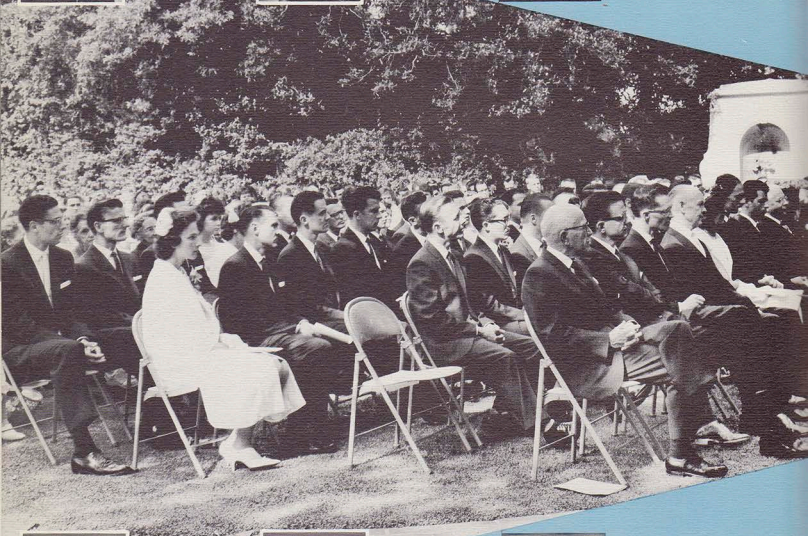
MICHAEL PERRY
GERMANO
Imperial Schools



D. MARIE DOCKEN
Homemaker



DONNA L. FINK
Secretary, German Department



ROBERT EDWARD NEITSCH
German Department



CARL B. O'BEIRN
Ministerial Assistant,
Oregon



PAUL E. PETRANIK
Dallas, Texas



CARROLL E. MILLER
Letter Answering Department



MORGAN L. OLSEN
Letter Answering Department



RICHARD E. PINELLI
Canadian Office Assistant
Vancouver, B. C.



CHARLES F. HUNTING
Ordained Minister,
London



EDWARD C. A. KLEIER
Bible Correspondence Course



H. PHYLLIS KNAPP
Homemaker
Assistant Librarian



MAURICE LEROY
HERSBERGER
Printing Department



CLARENCE O. HUSE
Ministerial Assistant,
N. Sydney, Australia

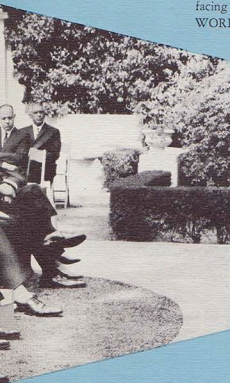


JAMES F. KUNZ
Local Elder



ROBERT MACDONALD III
ENVOY Photo Laboratory

The resounding words of valedictorian, Carl McNair, echo in the stillness of the LOWER GARDENS . . . "These are Ambassadors now facing the Space Age and preparing for The WORLD TOMORROW."



CARL E. MCNAIR
Ordained Minister,
Visiting Tour



LESLIE L. MCCULLOUGH
Administrative Assistant



JAMES A. WELLS
Assistant Registrar,
England



ESTELLE M. THURMAN
Assistant Librarian

Class of Sixty One



RICHARD F. PLACHE
Ministerial Assistant,
Oregon



ROY A. SCHULZ
Imperial Schools



FRANK SIMPKINS, JR.
Office Assistant
N. Sydney, Australia



JAMES DAVID ROUSH
Laramie, Wyoming



JOSEPH KIRK SEAB, JR.
Ministerial Assistant,
Missouri



RICHARD H. SEDLACIK
Bible Correspondence Course

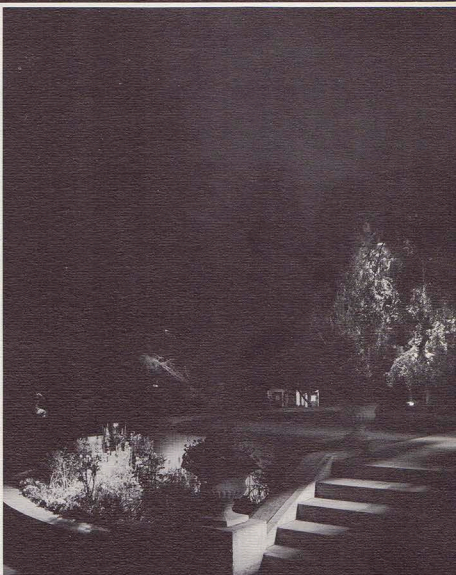


Meet our Student Council—A dedicated group chosen for outstanding leadership ability to serve in a greater capacity. Their purpose—to promote a congenial campus atmosphere and ensure the good conduct of the student body as a whole.

Counterclockwise about the table are: Student Body President, Sherwin McMichael; Senior Class President, David Mills; Junior Class President, Dennis Luker; Margaret Gunter (standing); Sophomore Class President, George Kemnitz; Norma Cowan; Jan Rubin; Judi Untiedt; Secretary, Gaylon Smith; Beverly Baird; Student Body Vice-President, Arthur Craig. Absent: Freshman Class President, Robert Bertuzzi.

he Cool of the Evening

Descend the library stairs and cross these spreading lawns...relax for a moment on the wrought iron lawn furniture and view the lights of Pasadena with their glow in the evening sky...step into the Lower Gardens where multi-colored fountains send sparkling, glistening water high into the air...enjoy the cool stillness of the night where the Ambassador Campus lies hidden from the world, in quiet serenity.



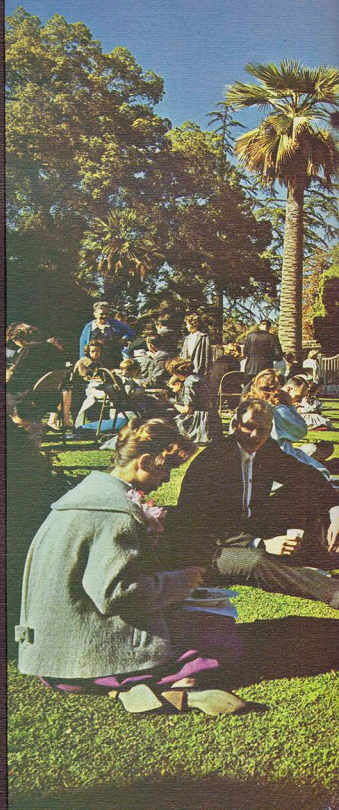
FACULTY

No position in the world is greater than that one which shapes and fashions the mind of youth. Competent leadership and instruction at Ambassador plant the seeds of thought that will bloom and bear fruit in the World Tomorrow.



In April, campus visitors would have found "picnic groups" spread over the grounds near the Library. The beauty of Ambassador's lawns are shared on the annual Feast days when thousands of local members bring food for a "pot luck" luncheon and a friendly get-together on the lawns. A rubber tree, native of Malaya, dominates the setting.

AND



ADMINISTRATION

A vibrant, high-angle photograph of a large group of people, mostly young adults, sitting on a lush green lawn. They are arranged in a loose circle, some on blankets, others on the grass. A massive, leafy tree dominates the right side of the frame, casting a large shadow over the gathering. In the background, a building with a prominent arched entrance and a palm tree are visible under a clear blue sky. The overall atmosphere is one of a relaxed, communal outdoor event.

Lawn festival

BOARD OF TRUSTEES



LOMA D. ARMSTRONG

Guidance Counselor of Women . . . Member of the Board of Trustees . . . Devoted wife and able assistant to her husband.

HERBERT W. ARMSTRONG

Founder and President of Ambassador College . . . Chairman of the Board of Trustees . . . Professor of Theology and related subjects . . . Editor of The PLAIN TRUTH, GOOD NEWS, and The Ambassador College Bible Correspondence Course . . . Director, The WORLD TOMORROW Broadcast.



DR. C. PAUL MEREDITH

Secretary-Treasurer of the Board of Trustees... Director of Ambassador College Bible Correspondence Course... M.A., Ambassador College.



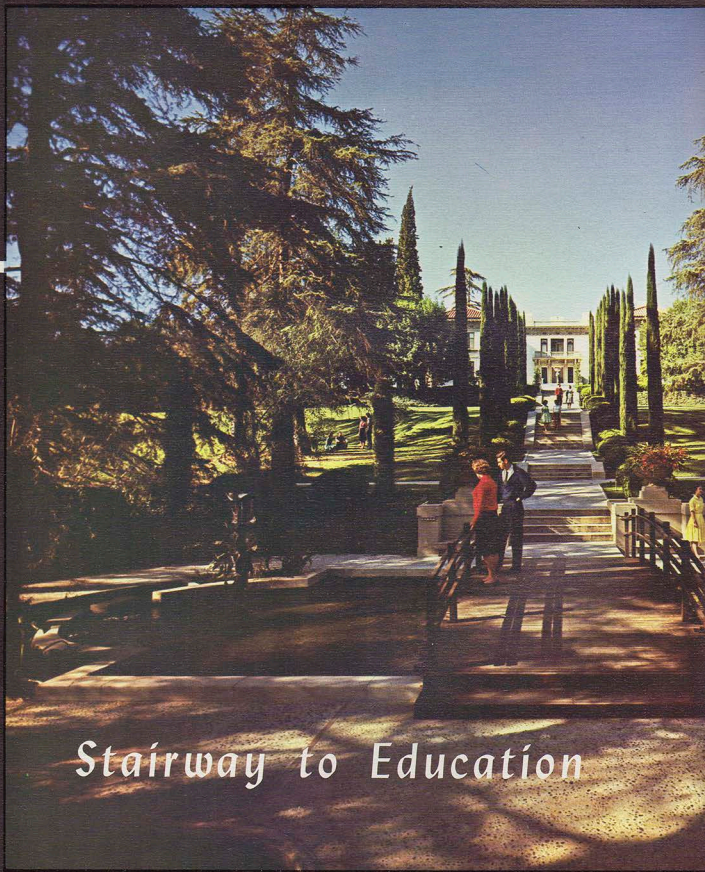
BASIL WOLVERTON

Member of the Board of Trustees... Artist... Author of The Bible Story.



MILTON M. REIMAN

Member of the Board of Trustees... Graduate of California Teacher's College.



Stairway to Education

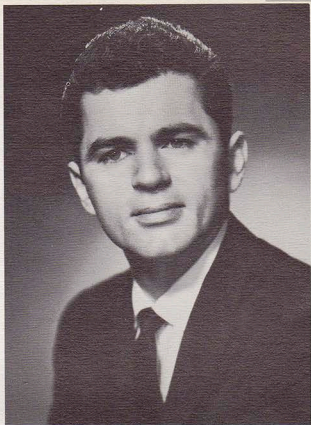
Faculty and Administration

This magnificent classroom building of Ambassador Hall presents an august and imposing picture of elegant beauty. This now major classroom center of the college is as colorful as the spacious, green grounds and gardens that surround it. Towering Italian Cypress trees along the walkway, glistening white marble stairs, majestic cedar trees; a setting in tone with the character of the college. The acquisition of Ambassador Hall was truly providential.



GARNER TED ARMSTRONG

Board of Trustees Vice-Chairman . . . Vice-President of Ambassador College . . . Co-Speaker on "The WORLD TOMORROW" broadcast . . . Professor of Theology . . . Instructor in Speech . . . Executive Editor of The PLAIN TRUTH and GOOD NEWS . . . M.A., Ambassador College.



KENNETH C. HERRMANN

Registrar . . . Instructor in Astronomy and Geology . . . Faculty Advisor for The ENVOY . . . A.B., Ambassador College.



JACK R. ELLIOTT

Dean of Students . . . Professor of Mathematics and Psychology . . . Director of Guidance and Testing . . . Director of Construction and Maintenance . . . Ambassador Club Co-ordinator . . . M.S.M.E., University of California, Los Angeles; M.A., Ambassador College.

ACADEMIC ADMINISTRATION



RODERICK C. MEREDITH

Board of Trustees... Second Vice-President of Ambassador College... Guidance Counselor of Men... Professor of Speech... Associate Professor of Theology... Senior Editor of The PLAIN TRUTH and GOOD NEWS... M.A., Ambassador College.



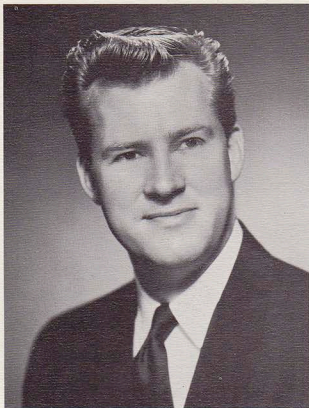
HERMAN L. HOEH

Dean of Instruction... Professor of History... Associate Professor of Theology... Managing Editor of The PLAIN TRUTH and GOOD NEWS... Director of the German Department... Editor of the German PLAIN TRUTH, "Die Reine Wahrheit"... M.A., Ambassador College.



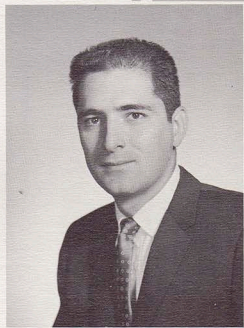
LUCY H. MARTIN

BUSINESS



VERN R. MATTSON

Controller and Business Administration Manager.



GENE M. MICHEL

Head of Accounting Department... Director of the Student Loan Fund... Assistant to the Controller... A.B., Ambassador College.



STANLEY R. RADER

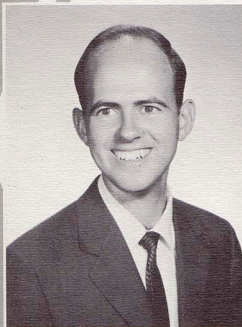
C.P.A. . . . Auditor and Financial Advisor.

ADMINISTRATION



KAREN ARMSTRONG

Receptionist . . . PBX Operator.



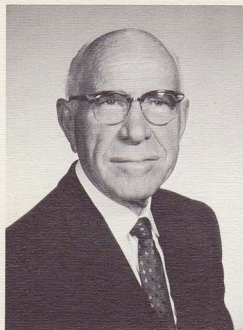
KEMMER PFUND

Accountant, Payroll Department . . . A.B., Ambassador College.



JESSIE EMMETT

Secretary to the Controller . . .
A.B., Ambassador College.



LEON ETTINGER

Professor of Music . . . Chairman of the Voice Department . . . Director of the Ambassador Chorale . . . B.A., University of California.



NOUVART C. ETTINGER

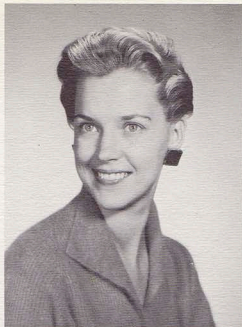
Assistant Instructor of Voice and Vocal Coach.



CAMILLE MARCAN

Instructor of Violin.

FACULTY



VELMA VAN DER VEER

Instructor in Home Economics . . . B.S., Kansas State College.



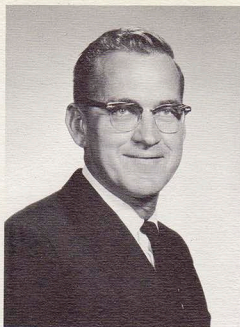
WALTER K. WESTBROOK

Instructor in Tennis, Track, and Physical Education . . .
A.B., University of Michigan.



DOROTHY WILLIAMS

Instructor in Piano . . . Accompanist for Vocal Department and Chorale.



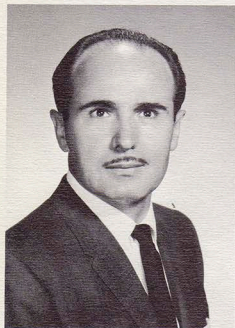
LYNN E. TORRANCE

Professor of English... Instructor in Typing... M.A., Colorado State College of Education.



DIBAR K. APARTIAN

Professor of French... Instructor in Typing and Etymology... French Club Sponsor... Speaker on the World Tomorrow Broadcast in French, "Le Monde a Venir"... M.A., Ambassador College.



DR. IWAN CZORNYJ

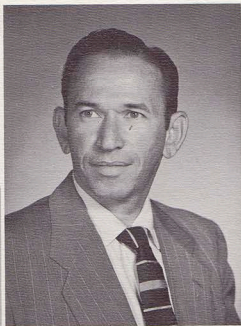
Professor of Russian... Russian Club Sponsor... Director of Russian Translation... M.D., Friedrich-Alexander's University, Erlangen, Germany.



CHARLES V. DOROTHY

Associate Professor of Theology, Instructor in Greek and International Relations... Spanish Club sponsor... M.A., La Universidad Interamericana, Saltillo, Mexico; M.A., Ambassador College.

FACULTY



RUSSELL A. REINER

Director of Ambassador Orchestra.



FLOYD O. LOCHNER

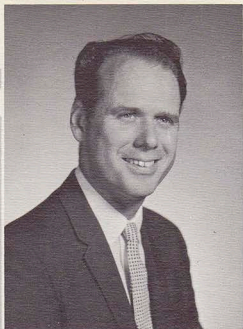
Director of Physical Education . . . Professor of Teachers Education . . . Superintendent of Imperial Schools
. . . M.A., University of Oklahoma.



HAROLD J. REED

Instructor in Voice . . . B.A., Jamestown College.

FACULTY



ALBERT J. PORTUNE

Executive Aide to the Vice-President . . . Instructor in Theology and Speech . . . A.B., Ambassador College.



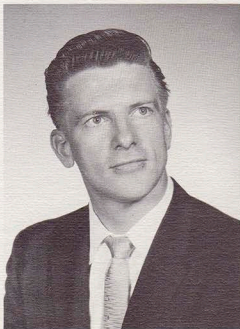
L. LEROY NEFF

Instructor in Speech . . . Manager of the Mail Receiving Department . . . Selective Service Consultant . . . A.B., Ambassador College.



DONALD G. WOFFORD

Instructor in Spanish . . . M.A., La Universidad Interamericana, Saltillo, Mexico; A.B., Ambassador College.

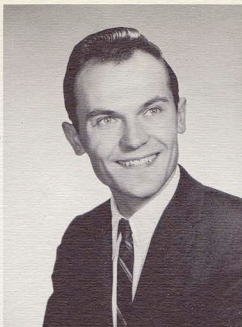
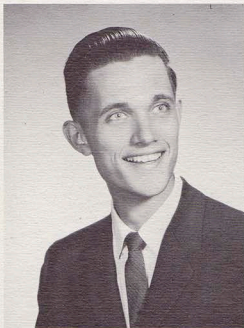


DAVID JON HILL

Associate Professor of Theology . . . Instructor in Journalism, Geography, and Speech . . . Faculty Advisor of The PORTFOLIO . . . A.B., Ambassador College.

ROBERT E. NEITSCH

Instructor in German . . . Manager of the German Department . . . Editor of the German PLAIN TRUTH, "Die Reine Wahrheit" . . . German Club Sponsor . . . A.B., Ambassador College.



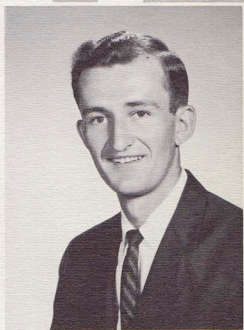
ERHARD KLAMMER

Instructor in German . . . Speaker on the WORLD TOMORROW in German, "Die Welt von Morgen" . . . Editor of the German PLAIN TRUTH, "Die Reine Wahrheit."



J. GRAHAM DAVIES

Instructor in Portuguese . . . Director of Portuguese Translation . . . Sao Paulo, Brazil.



BERNELL MICHEL

Assistant Director and Instructor of Physical Education . . . Assistant Principal of Imperial Schools . . . A.B., Ambassador College.

FACULTY



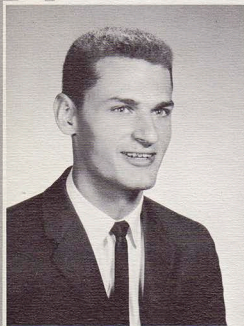
MARJORIE HUGHES

Instructor in Literature ... A.B., Ambassador College.



WILLIS J. BICKET

Instructor in Biological Science ... B.S., University of Illinois.



MICHAEL P. GERMANO

Instructor in Teacher Education ... B.S., University of Illinois; A.B., Ambassador College.



FRANK P. INGLIMA

Instructor in Italian ... Director of Italian Translation ... Sponsor of Italian Club.



DR. E. H. OWEN

Lecturer on Anatomy, Physiology and Nutrition ...
Kirksville College of Osteopathy and Surgery.



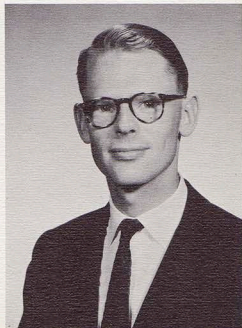
JOHN G. PESTANA

Instructor in Portuguese ... Portuguese translator ...
B.A., Andrew University.



JANET EICKHOFF

Instructor of Clothing and Home Economics ... B.S.,
Kansas State University.



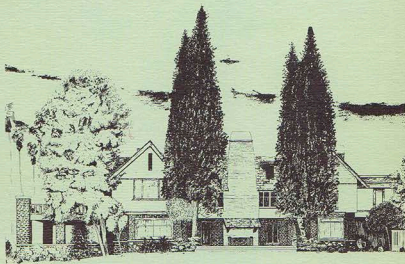
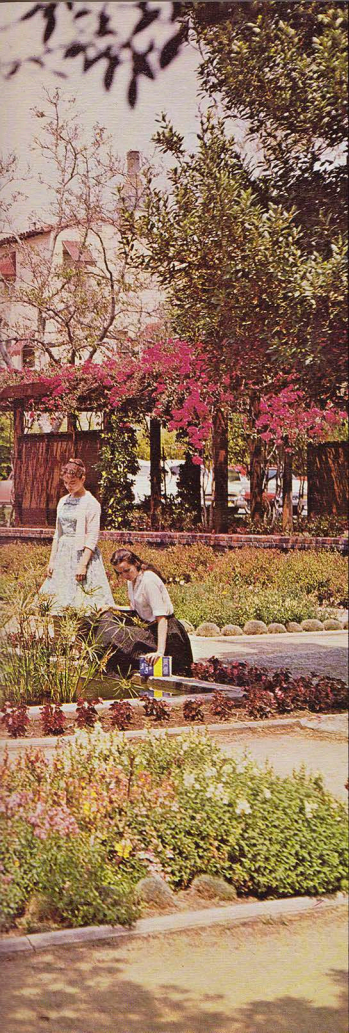
ANTHONY BUZZARD

Instructor in English ... Accompanist and Vocal Coach,
Music Department ... B.A., Oxford, England.



SENIORS

Stately, friendly, masculine Manor del Mar instills within our young men an appreciation for fine quality. Built of rare imported materials and finished by Italian artisans, its fine woodwork and richly carpeted floors afford a cultural atmosphere. Its grounds and sunken garden provide a panorama of color and design.



A garden paradise at Manor del Mar—colorful Snapdragons blossom profusely in the foreground; lively Begonias surround the pool with its bird bath. Cascading from the arbor are the brilliant red Bougainvillea—native of India. A Bay tree overshadows the group of five in the foreground, a pleasant setting for study or conversation. A border of Floribunda roses skirts the garden just inside the low brick wall.

SENIORS

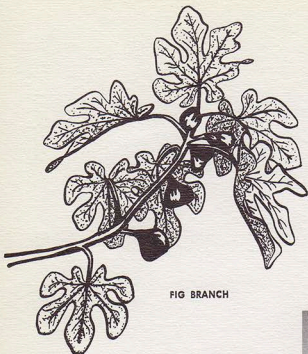
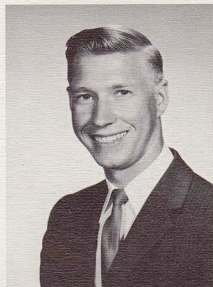


FIG BRANCH



LEROY W. COLE
Albany, Oregon

ALBANY UNION HIGH SCHOOL

Ambassador Club... Spanish Club... baseball, tennis, hiking... Ministerial Aide — Wichita, Kansas... Visiting Program... Mail Receiving Dept... "Be prepared for what is least expected."



PAUL H. ALEXANDER
Columbus, Mississippi

EAST MISSISSIPPI JUNIOR COLLEGE

Ambassador Club... Tennis singles champion '60-'61... water skiing, fishing, baseball, travel... Instructor — Imperial Schools... "You can't always win, but you can always hustle."



ROGER G. CLARK

Erie, Pennsylvania
DE VRY TECH OF CHICAGO

1961 ENVOY Staff... Ambassador Club... Spanish Club... Portfolio Staff... electronics, mountain climbing, hunting, fishing... Instructor — Imperial Schools... "Give as much as you can."



POINSETTIA

LOWELL G. BLACKWELL
Kilgore, Texas

KILGORE HIGH SCHOOL

Ambassador Club; Vice-President... French Club... Ambassador Chorale... skin diving, model building... Mail Receiving Dept... "It's what you DO with what you know that counts."





HOWARD SHERMAN COLBY

Cicero, Illinois

SOUTH DAKOTA SCHOOL OF MINES

1962 ENVOY — Editor-in-Chief; '61 ENVOY Staff...
Ambassador Club... German Club... Instructor —
Imperial Schools... "Effort precedes accomplishment."



MELBA ANN FLATT

Cookeville, Tennessee

COOKEVILLE CENTRAL HIGH SCHOOL

1961 ENVOY Staff... Women's Club... French Club
... Student Council... sports, floral decoration... In-
structor — Imperial Schools... "Prepare NOW! The
opportunity WILL come later."



EUROPEAN FAN PALM



LELAND RAMON BONNETT

Wichita, Kansas

WICHITA UNIVERSITY

Ambassador Club... Spanish Ambassador Club...
Spanish Club... electronics, horseback riding... Mail
Receiving Dept... "Time is to be wisely used."



GARDENIA



THOMAS H. BLACKWELL

Kilgore, Texas

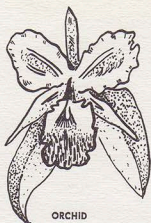
IMPERIAL HIGH SCHOOL, GLADEWATER

Ambassador Club; President... French Club; Presi-
dent... Social Activities Committee... Ambassador
Chorale... fishing, water skiing... Ministerial Aide
— Eugene, Oregon... Visiting Program... Letter An-
swering Dept... "Enjoy study, work, and play."

SENIORS

ARTHUR R. CRAIG
Nesbit, Mississippi
UNIVERSITY OF MISSISSIPPI

Student Body Vice-President . . . Sophomore Class President . . . Ambassador Club/ President . . . German Club . . . Baptizing Tour . . . Visiting Program . . . Letter Answering Dept. . . "It needs doing; do it!"



ORCHID

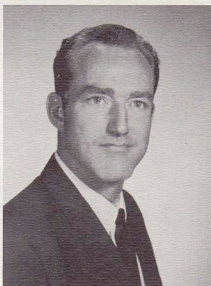


CLARENCE T. GOULD, JR.

Casper, Wyoming

HARVARD GRAD. SCHOOL OF BUS. ADM.

Ambassador Club; Vice-President . . . French Club . . . fishing, horseback riding, swimming . . . Assistant Office Supervisor . . . "Patience, persistence, and perseverance."



ARTHUR W. DOCKEN

Minneapolis, Minnesota

UNIVERSITY OF MINNESOTA

Ambassador Club . . . German Club . . . swimming, conversation . . . Mailing Office Supervisor . . . "Determine your goal, then strive to attain it."



SUCCULENT

MARLYS JANTZ

Alpena, Michigan

SAN GUAN HIGH

Women's Club . . . German Club . . . swimming, bicycling, hiking, needlework, floral design . . . Co-Worker Dept. . . "Actions speak louder than words."



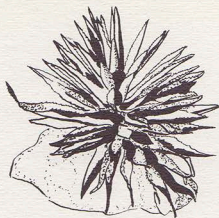


BILL EASTBURN

Austin, Texas

UNIVERSITY OF TEXAS

Ambassador Club... German Club... reading, concerts, sightseeing... German Dept. — Translator...
"Do what you ought, rather than what you like."



CENTURY PLANT

ROBERT EUGENE GENTET

Wichita, Kansas

WICHITA HIGH SCHOOL EAST

1961 ENVOY Staff... Ambassador Club... German Club... photography, nature study... Letter Answering Dept... "Diligence leads to success."



NANCY MAE KISER

Chehalis, Washington

BOISTFORTH HIGH SCHOOL, KLABER, WASH.

Women's Club... Spanish Club... Ambassador Chorale and Octet... Ambassador Orchestra... Piano Accompanist... Radio Studio; Secretary... "Learn through serving others."



RAYMOND C. DICK

Caldwell, Idaho

NAMPA BUSINESS COLLEGE

Ambassador Club... Ambassador Chorale... fishing, travel... Letter Answering Dept... "Be completely dependable."

WILLIAM H. ELLIS

Chicago, Illinois

WRIGHT CITY COLLEGE

1962 ENVOY Staff... Ambassador Club... German Club... Portfolio Staff... Social Activities Committee... golf, history... Correspondence Course Dept...
"Learn to excel your own standards."



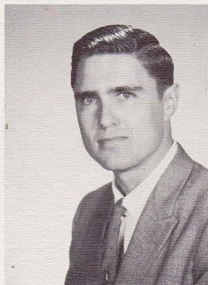


LYNN MARTIN
Lenoxville, Pennsylvania
MOUNTAIN VIEW JOINT SCHOOLS

Ambassador Club . . . Spanish Ambassador Club;
President . . . Spanish Club . . . piano, archery, track,
hiking, baseball . . . Mail Receiving Dept. . . "Mistakes
are part of learning."

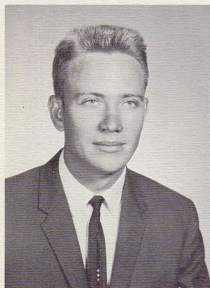


BLUE PALM



VERNON F. HARGROVE
Weinert, Texas
TEXAS A. AND M.

Freshman Class President . . . Ambassador Club; Presi-
dent . . . Spanish Club; President . . . basketball, hunt-
ing, swimming, track . . . Ministerial Assistant — Chi-
cago . . . Visiting Program . . . Letter Answering Dept.
... "Be sure what's right, then go ahead."



LOYD WAYNE HOHERTZ
San Angelo, Texas
WALL HIGH SCHOOL

Ambassador Club . . . German Club . . . Ambassador
College Chorale . . . baseball, swimming, basketball
... "Be willing to take correction."

SENIORS



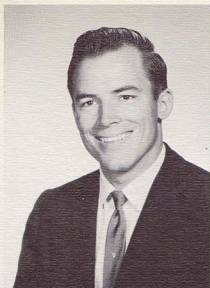
SARAH ELLEN LINGO
Van Buren, Missouri
WASHINGTON UNIVERSITY

1962 ENVOY Staff . . . Women's Club . . . German Club
... hiking, swimming . . . Typist — Ambassador Col-
lege Press . . . "A busy life is an interesting life."



JOHN ROBERT HAWKINS
Lafayette, Indiana
PURDUE UNIVERSITY

Ambassador Club; Vice-President . . . German Club . . .
sculpturing, camping, hiking, trumpet . . . Ministerial
Assistant — Portland and Eugene . . . Visiting Program
... "Put in your best."



CHARLES SHERWIN McMICHAEL

Salina, Kansas

SALINA SENIOR HIGH SCHOOL

Student Body President... Ambassador Club; President... French Club... Student Activities Committee... Portfolio, Editor... Baptizing Tour... Visiting Program... Mail Receiving Dept... Letter Answering Dept... "Live a well-balanced life."



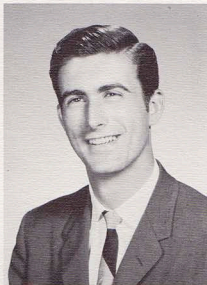
RICE PAPER PLANT

ALLEN M. GOYETTE

San Antonio, Texas

SAN ANTONIO COLLEGE

Ambassador Club... French Club... Social Activities Committee... Master of Ceremonies... Printing Dept... "Do whatever you're doing with your might."



GUADALUPE CYPRESS



ROBERT C. JOHANNESON

Mitchell, South Dakota

AMERICAN SCHOOL

Ambassador Club... German Club... languages, travel... Mail Receiving Dept... "Evaluate your abilities; then tackle the task."



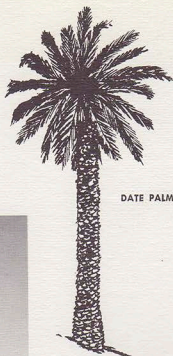
DARLYNE RAE LONGWILL

Middleton, Idaho

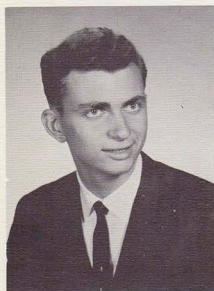
IDAHO STATE COLLEGE

Women's Club... Spanish Club... Student Council '61-'62... horseback riding, square dancing, culinary arts... Secretary... "Live THIS day to the fullest."

SENIORS



DATE PALM

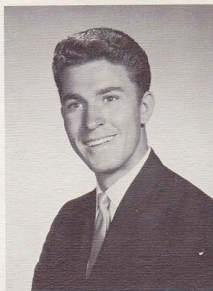


DONALD D. SCHROEDER

Crystal Lake, Illinois

CRYSTAL LAKE COMMUNITY HIGH SCHOOL

Ambassador Club... German Club... Ambassador Chorale... hunting, fishing... Ambassador College News Bureau... "Put your hand to the plow, and never turn back."



DAVID HUGH MILLS

Wallace, North Carolina

WALLACE-ROSE HILL HIGH SCHOOL

Senior Class President... Junior Class President... Ambassador Club; Vice-President... swimming, basketball... Mail Receiving Dept... Baptizing Tour... "Why let things happen; make them happen."

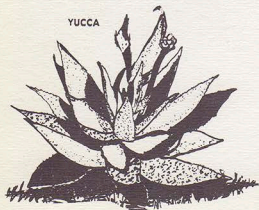


MARGARET LYNN MCGILL

Oakdale, Pennsylvania

COLLEGE OF WOOSTER

Women's Club... German Club... singing, swimming, reading... Instructor, Imperial Grade School... "Keep a smile handy for all occasions."



YUCCA

ARTHUR C. MOKAROW

Palos Park, Illinois

DePAUL UNIVERSITY

Ambassador Club; Vice-President... Russian Club; President... tennis, swimming, hiking... Visiting Program... "Success comes from placing the truly important things first."





RAY ROBERTSON
Henagar, Alabama
PISGAH HIGH SCHOOL

Ambassador Club . . . French Club . . . Social Activities Committee . . . hunting, fishing, swimming . . . Mail Receiving Dept. . . . Visiting Program . . . "Listen, learn, and obey."



BANANA TREE



RONALD C. MILLER
Larned, Kansas
FRIENDS UNIVERSITY

Ambassador Club; Secretary, Treasurer . . . German Club . . . First Place; pole vaulting, lightweight weight lifting . . . Ambassador Chorale . . . Chorale Manager '61-'62 . . . Ambassador Octet . . . Mail Receiving Dept. . . . "Why let it get you down?"



LEONARD SMITH
Keenes, Illinois

WEBBER TOWNSHIP HIGH SCHOOL

Ambassador Club . . . German Club . . . baseball, reading . . . Mail Receiving Dept. . . . "Why rely upon self alone?"



MARGIE HELEN MEREDITH
Camp, Arkansas
SALEM HIGH SCHOOL

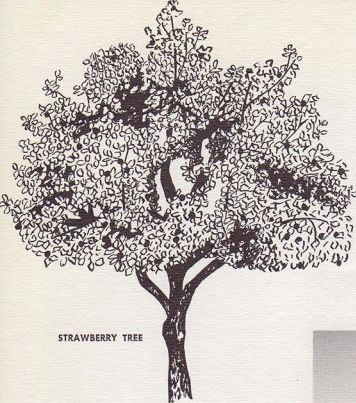
Homemaker, mother of two sons and a daughter . . . German Club . . . hiking, cooking . . . "Things worth having are worth working for."

CLAYTON DALE STEEP
Milwaukee, Wisconsin
UNIVERSITY OF WISCONSIN

Ambassador Club; President, Secretary . . . French Club; President . . . hiking, chess, trumpet . . . French Dept. . . . Letter Answering Dept. . . . "Knowledge and ability are valuable when used."



SENIORS



STRAWBERRY TREE



DEAN R. WILSON

Gresham, Oregon

GRESHAM UNION HIGH SCHOOL

Ambassador Club; President . . . Spanish Club . . . bowling, tennis, softball . . . Ministerial Aide — Portland, Oregon . . . Visiting Program . . . Letter Answering Dept. . . "Be determined!"



RUTH WALTER

Portland, Oregon

PORTLAND CHRISTIAN HIGH SCHOOL

Women's Club . . . Social Activities Committee . . . embroidery, music . . . Music Dept. of Ambassador College and Imperial Schools . . . "Inspiration is the glow that warms us all!"

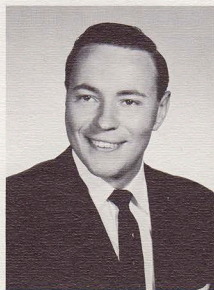


EUGENE MORRIS WALTER

Yale, South Dakota

HURON COLLEGE, HURON, SOUTH DAKOTA

Ambassador Club; Vice-President . . . German Club . . . First Place: lightweight weight lifting . . . history, music, travel . . . Baptizing Tour . . . Visiting Program . . . Letter Answering Dept. . . "Constancy leads to achievement."

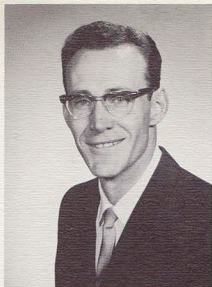


ROWLEN F. TUCKER

New Haven, Connecticut

CARL SCHURZ HIGH SCHOOL

Ambassador Club . . . Spanish Ambassador Club . . . Spanish Club; President . . . Ambassador Chorale . . . reading, music . . . Ministerial Aide — Gladewater, Texas . . . Visiting Program . . . "Reach the summit, regardless of the cost."



RALPH WILLIAM WARD

Rosholt, South Dakota

SOUTH DAKOTA STATE UNIVERSITY

Ambassador Club... German Club... tennis, weight lifting, half mile run... Assistant Supervisor, Mailing Department... "Always strive forward."



MARY ANN WILLIAMS

Big Sandy, Texas

IMPERIAL HIGH SCHOOL

Women's Club... Spanish Club... cooking, needlework, horseback riding... First Place: women's tennis singles, doubles, mixed doubles... Library Supervisor... "Strive to give, and be content with what you receive."



WILLIAM D. WINNER

Frostburg, Maryland

BEALL HIGH SCHOOL

Ambassador Club; President... Spanish Club... First Place: mile run, half mile run... mandolin... Baptizing Tours... Visiting Program... Letter Answering Dept... "Preparation takes time."



CYCAD



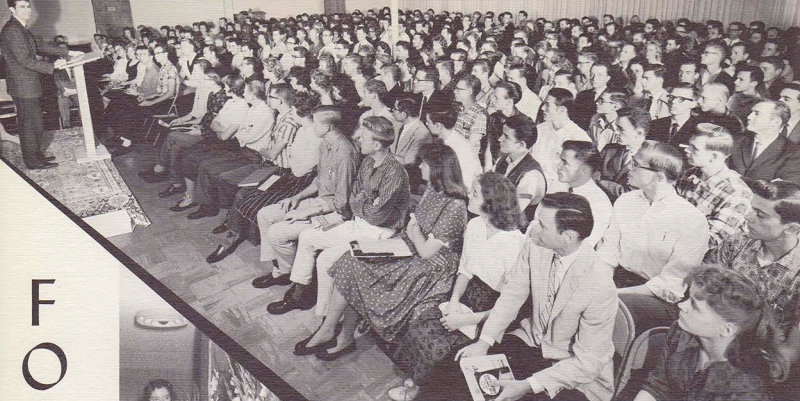
ROBERT FRANK STEEP

Milwaukee, Wisconsin

CUSTER HIGH SCHOOL

Ambassador Club; Secretary, Treasurer... German Club... Ambassador Chorale; Vice-President... Ministerial Aide - Springfield, Missouri... Visiting Program... Mail Receiving Dept... "Keep your eye on the goal."

FORUMS



"Forum, please come to order." A hush falls over the room as students put aside conversation to hear Student-Body President Sherwin McMichael.

Assemblies and forums are eagerly anticipated by students and faculty alike. Educational, relaxing, informative, corrective — each is unique. Serious topics include admonitions to change our way of life. The lighthearted side can be depicted by a student skit, and the educational by a film on travel, science or Biblical history.

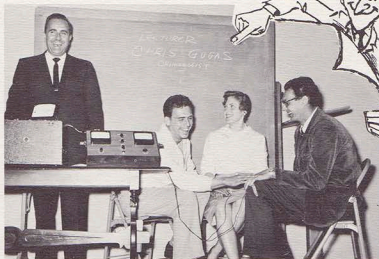
Swirling through the fashion "picture frame," Ambassador co-eds make their debut with special creations in the annual Fashion Show. Home Economics classes provide the valuable experience and the personal instruction that results in these well-tailored garments.

Hunting enthusiast, Mr. Garner Ted Armstrong, demonstrates both the intricate workings and the proper use of firearms. This "ten pointer" shot in the wilds of Colorado is his proof of a successful hunt.





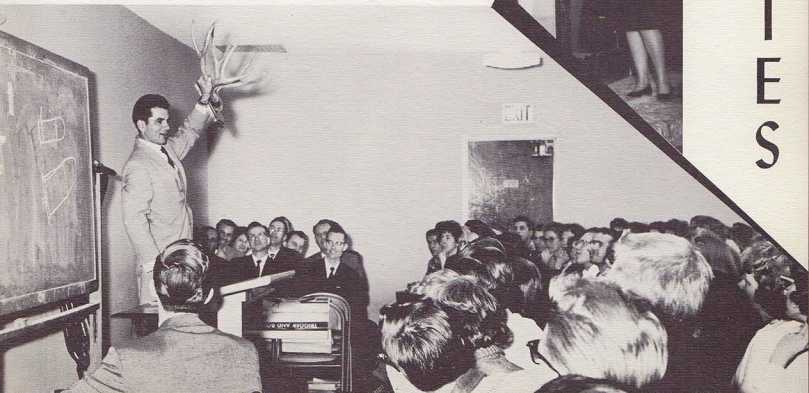
Laughter prevails throughout the Assembly as the world traveler and lecturer Chris Gugas tells his amazing experiences as one of the top ten Criminologists in the United States.



Who's guilty? Three freshmen tested the accuracy of the lie detector. Results were spectacular.



ASSEMBLIES





The Auditorium rings with music as the Ambassador Chorale presents a special number between sermons. Festival time offers this opportunity for our scattered brethren to hear beautiful music sung by the Chorale.

For the first time during a Spring Festival, The Church of God held services in the mammoth Civic Auditorium in the heart of cultural Pasadena. Members from New Mexico, Nevada, Utah, and Arizona joined their California brethren for three days of meetings.



Morning services are over and a quick walk to the Ambassador campus just blocks away sharpens appetites. A pot-luck luncheon under the California sun is waiting.



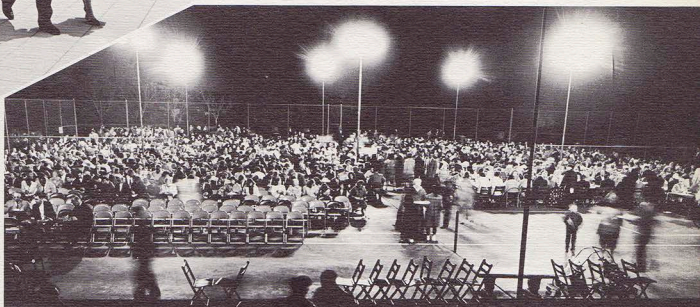
Sloping green banks, covered with fallen leaves, and cool shady areas provide a natural setting for out-door feasts.

CIVIC AUDITORIUM

TWO THOUSAND REJOICE AT SPRING FESTIVAL

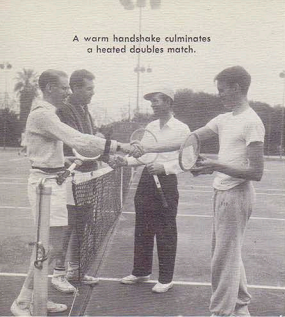


"Have a seat — there's plenty of room." Between morning and afternoon services, delicious pot-luck dinners were enjoyed out-door cafeteria style on the beautiful lawns of Ambassador College.



Home-made casseroles, breads, salads and piping hot coffee were all served during the evening, making this a night to be much remembered. Our modern tennis courts were converted into a perfect setting for fellowship.

A warm handshake culminates
a heated doubles match.



GET SET ... GO!

It's Field Day! A day of thrilling action and tense excitement for all. Traditionally, the upper classmen have outstripped the underclassmen in total points for the day. Who will win this year?

Field Day is the chance to demonstrate athletic abilities. A day of rugged outdoor fun; then, we assemble on the spacious grounds surrounding Manor Del Mar for the Chili Party.

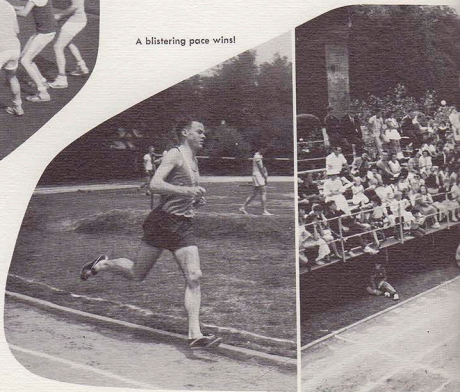
It's still anyone's ball!



"Men in space!"

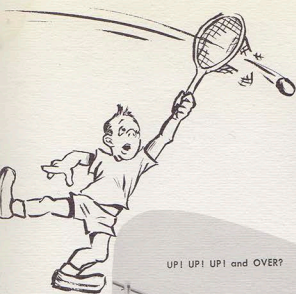


A blistering pace wins!

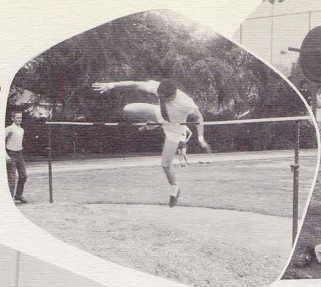


Agility and co-ordination at its peak.

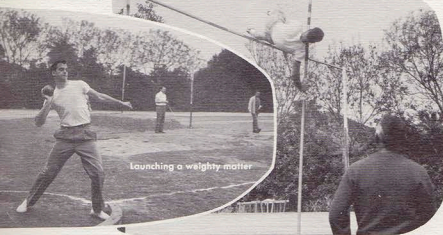




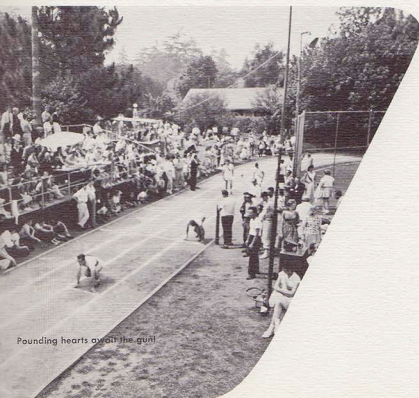
UP! UP! UP! and OVER?



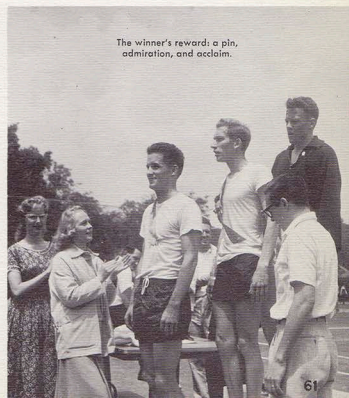
"Ummm-ppph!"



Launching a weighty matter



Pounding hearts over the goal



The winner's reward: a pin, admiration, and acclaim.

JUNIORS



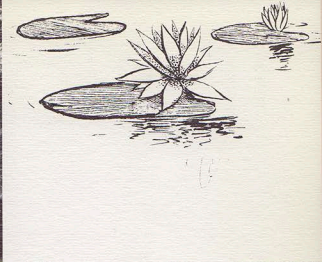
a dashing stream,



carpeted slopes,

Ambassador's mountain stream cascades capriciously over waterfalls and spills into a tranquil pool, where bass and trout swim playfully. Students pause in the midst of a busy day to enjoy the view from its grassy carpeted banks. After a moment's reflection, they too must hasten away to tend college affairs.

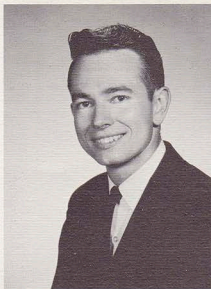




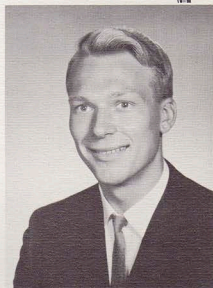
and a moment for reflection



ANTHONY F. BUZZARD
West Clandon, Surrey, England
OXFORD UNIVERSITY



GUY L. AMES
Mountain View, California
MOUNTAIN VIEW UNION H. S.



DAVE ALBERT
Wausau, Wisconsin
CATALINA H. S.



BEVERLY JEAN BAIRD
Fresno, California
FRESNO CITY COLLEGE



WILLIS JOHN BICKETT
Zion, Ohio
UNIVERSITY OF ILLINOIS

JUNIORS





LAURIE ABRAHAM
Glendale, California
IMPERIAL H. S.



DAVID ROY BEDFORD
Liss, Hampshire County, England
LISS COUNTY SCHOOL



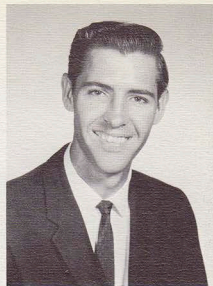
GARY E. ARVIDSON
Ashtabula, Ohio
GENERAL MOTORS INSTITUTE



GEORGE BISHOP
Pekin, Illinois
BRADLEY UNIVERSITY



HOWARD A. CLARK
Pasadena, California
YALE UNIVERSITY



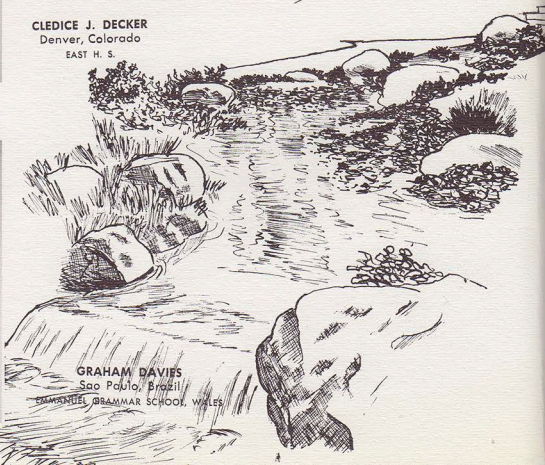
VIRGIL L. COX
Jonesville, Louisiana
LOUISIANA STATE UNIVERSITY



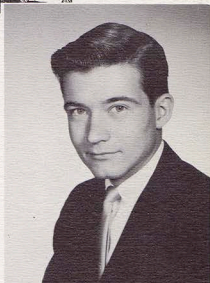
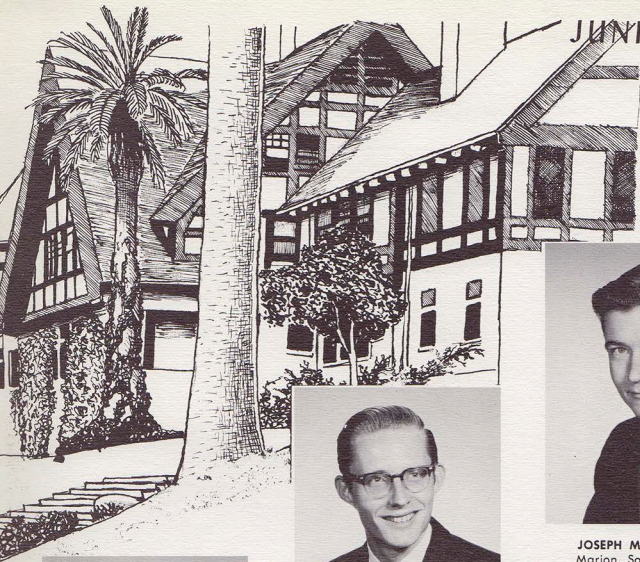
CLEDICE J. DECKER
Denver, Colorado
EAST H. S.



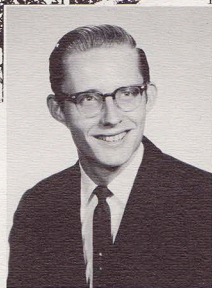
GRAHAM DAVIES
Sao Paulo, Brazil
EMMANUEL GRAMMAR SCHOOL, WALES



JUNIORS



JOSEPH M. DAVIS, JR.
Marion, South Carolina
UNIVERSITY OF SOUTH CAROLINA



WILLIAM F. DANKENBRING
Seattle, Washington
SHORELINE H. S.



JANETTE CAROL CUNNINGHAM
Thompson, North Dakota
THOMPSON H. S.



NORMA VIOLET COWAN
Memphis, Tennessee
TREADWELL H. S.



RON GOODWIN
Alton, Illinois
ALTON SENIOR H. S.



JAMES L. HAMMONS
Keytesville, Missouri
KEYTESVILLE H. S.



MARGIE EVANOW
Chicago, Illinois
NORTHERN ILLINOIS UNIVERSITY



MARY MARGARET GUNTER
Bend, Oregon
KENNEWICK SENIOR H. S.



DAVID HALPAIN
St. Joseph, Missouri
BENTON H. S.

JUNIORS





LeROY RENE DIEM
Ottawa, Illinois
UNIVERSITY OF ILLINOIS



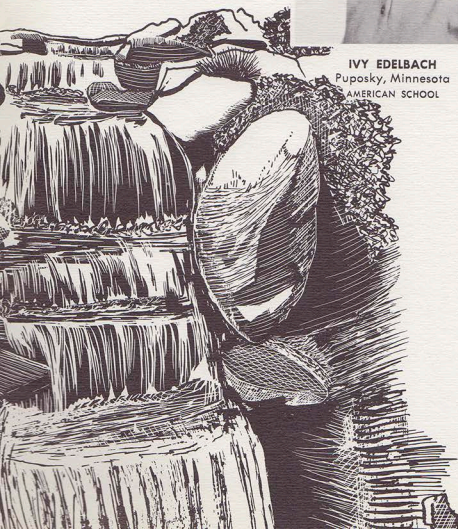
IVY EDELBACH
Puposky, Minnesota
AMERICAN SCHOOL



CARL D. FRANKIN
Dowagiac, Michigan
DOWAGIAC CENTRAL H. S.

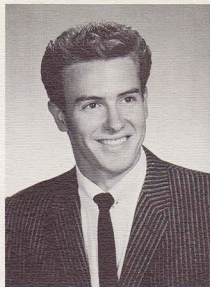


WAYNE HOWARD DUNLAP
San Mateo, California
COLLEGE OF SAN MATEO





BERNARD HUGH KELLY
Waukegan, Illinois
NORTHERN ILLINOIS UNIVERSITY

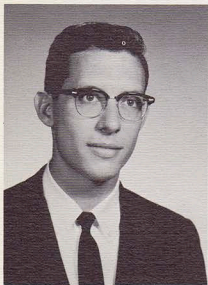


TOM LAVENDER
Cisco, Texas
IMPERIAL H. S.

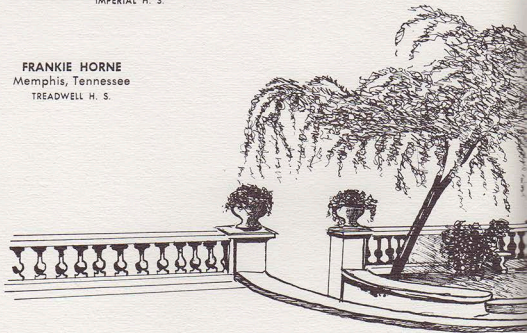


JERRY S. HORTON
Pasadena, California
IMPERIAL H. S.

FRANKIE HORNE
Memphis, Tennessee
TREADWELL H. S.



FREDERICK C. KELLERS
St. Matthews, South Carolina
UNIVERSITY OF SOUTH CAROLINA



JUNIORS



GLORIA ANN JENNINGS
Oneonta, Alabama
SUSAN MOORE H. S.



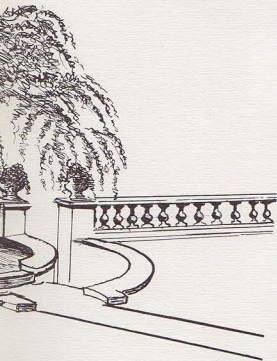
BETTY JO HAYLEY
Memphis, Tennessee
HUGH MORSON H. S.



DWAYNE LONG
Riverbank, California
MODESTO BUSINESS COLLEGE



ROY O. HOLLADAY
Charleston, Tennessee
BRADLEY CENTRAL H. S.





BETTY YVONNE ODEN
Oneonta, Alabama
GADSDEN BUSINESS COLLEGE



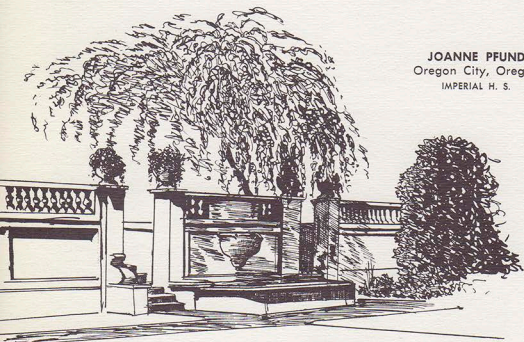
EILEEN M. McKINLEY
Kenton, Manitoba, Canada
BRANDON COLLEGE, MANITOBA



EARLE G. REESE
Port Matilda, Pennsylvania
WORTH TOWNSHIP H. S.



JOANNE PFUND
Oregon City, Oregon
IMPERIAL H. S.



ROBERT J. PETRY
Alexandria, Virginia
MOUNT VERNON H. S.

JUNIORS



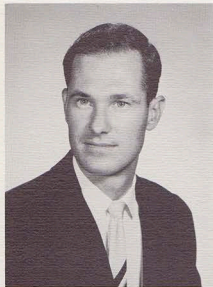
DENNIS GENE LUKER
Plymouth, Michigan
UNIVERSITY OF DELAWARE
JUNIOR CLASS PRESIDENT



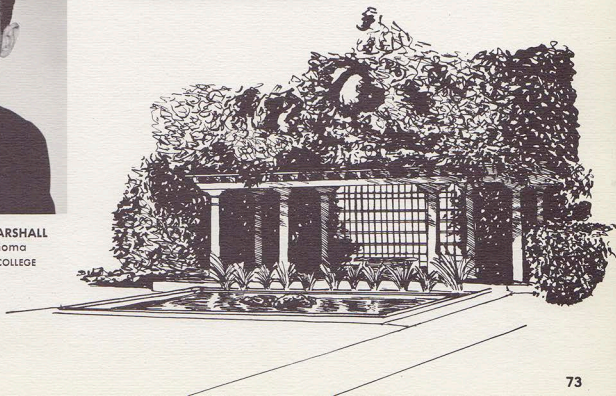
PAUL S. ROYER
Canton, Ohio
OHIO STATE UNIVERSITY



JOHN E. PORTUNE
Arcadia, California
OREGON STATE UNIVERSITY



EDWARD ALLEN MARSHALL
Oakwood, Oklahoma
EAST TEXAS BAPTIST COLLEGE



JOHN R. SCHROEDER

Kenedy, Texas
UNIVERSITY OF TEXAS



JOHN DANERI SCHROEDER

Coronado, California
SAN DIEGO STATE COLLEGE



CONNIE SANDVOLD

Kansas City, Missouri
WILLIAMS H. S.

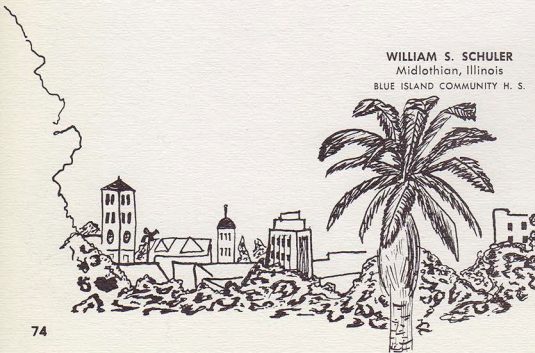


JAN RUBIN

Milford, Connecticut
MILFORD H. S.

WILLIAM S. SCHULER

Midlothian, Illinois
BLUE ISLAND COMMUNITY H. S.



JUNIORS



JOYCE FAY SEFTAK
Pasadena, California
IMPERIAL H. S.



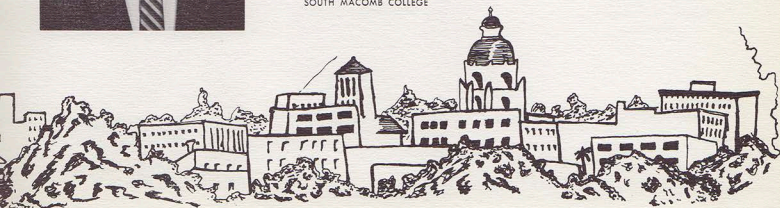
ROBERT LEWIS RUXTON
Kansas City, Missouri
UNIVERSITY OF KANSAS



MARILYN RUSSELL
Lufkin, Texas
HUNTINGTON H. S.



WILLIAM HENRY SHREWSBURY
Utica, Michigan
SOUTH MACOMB COLLEGE



JUNIORS



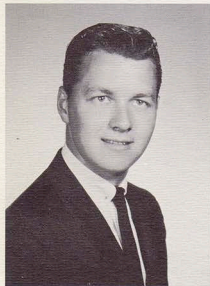
JUDI UNTIEDT
Aurora, Colorado
AURORA H. S.



GRETA GAYLON SMITH
Pottsville, Texas
POTTSVILLE H. S.



WARREN H. WAIAN
Los Angeles, California
UNIVERSITY OF CALIFORNIA



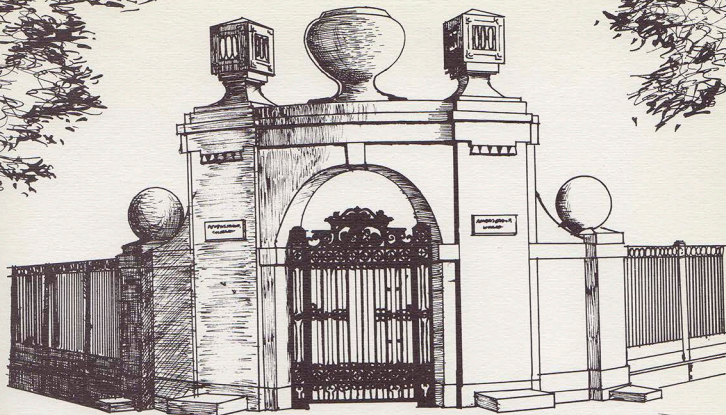
KEN WESTBY
Seattle, Washington
LINCOLN H. S.



CAROLYN FAY TRAVIS
Cedartown, Georgia
CEDARTOWN H. S.



ROBERT E. STEPHENS
Barlow, Kentucky
SOUTHERN ILLINOIS UNIVERSITY



ERNEST L. WILLIAMS
Johannesburg, South Africa
KING EDWARD VII H. S.



MONA ZACHARY
Shreveport, Louisiana
NORTHWESTERN STATE COLLEGE



PAUL J. ZAPP
Festus, Missouri
FESTUS H. S.

Pebbled walks, specially lighted for the Faculty Reception in September, wind their way among towering fan palms. Brilliantly lighted rubber and podocarpus trees mark adjoining walkways. The planet, Jupiter, brilliantly dominates the clear evening sky. Soft strains of music and the gaiety of the reception in Ambassador Hall combine with the sounds of tumbling waters from the stream.



CAMPUS ACTIVITIES

More than classroom training is required to become a successful Ambassador. Leadership, personality, and character are developed through Campus Activities.

An exotic array of temperate to tropical plants surrounds Terrace Villa with an atmosphere of changing moods. The entrance is canopied by a South African dombeya tree. Potted cycads stand as sentinels on each side of the doorway while a cluster of bird-of-paradise plants dominates the foreground.

This rich green foliage, accented by white Corinthian columns, is situated in front of beautiful Terrace Villa women's residence. A short walk around this exotic garden reveals choice plants from around the world. Those who have traveled in Malaya would find the large broad leaves of the rubber tree (upper left) very familiar. From South America come the pepper tree and banana tree (center back). The European fan palm (far right) was brought from the Mediterranean. Just beyond the rubber tree is the cabbage tree, an unusual plant with long slender spike-like leaves. Southern California's desert-like climate is superb for this magnificent variety of plants.

ANNIE MANN

Hostess in charge of Mayfair.

Living in the women's residence Mayfair, Mrs. Mann is the very close friend of our co-eds. Whether they come for advice or counsel or just for a woman to woman talk, she is always a help and encouragement.

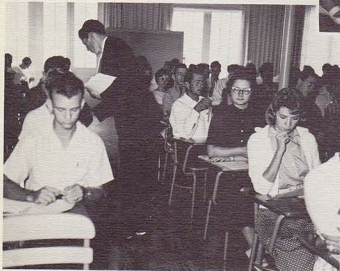


Ready...set...start your freshman year. Incoming students from all over the nation gather in the Assembly Hall to officially embark on their college careers. Dean of Instruction Haeh gives pointers for the days ahead.

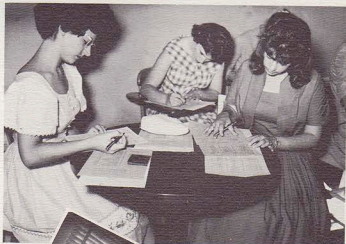


Really concentrating — over 100 busy students ponder questions on entrance exams.

Time out. Many thoughts pass through the minds of freshman students before they receive their next entrance test.



"Let's see now... Spanish, 4 credits." Poring over their schedules, Ambassador co-eds select their courses for the year.



Orientation

Excitement mounts. Students arrive on the Ambassador campus from all over the nation. Classes are soon to get under way. After Orientation, new students meet the challenge of Entrance Tests. Then, new and old Ambassadors select and register for their courses of study for the coming semester. A thrilling new year has begun.



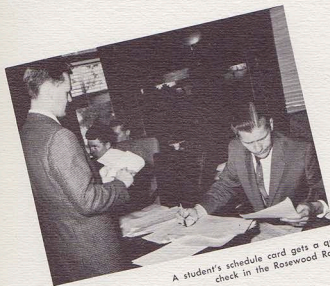
"What?!!
You mean I have
to go through the

Registration



"Everything seems to be in order." Registrar Herrmann skims over a freshman's schedule before the patient registration line moves on.

"Should I sign for section A, B, C, or D?"



A student's schedule card gets a quick check in the Rosewood Room.

Smiles broaden as registrants approach the end of the line for a check of finances.

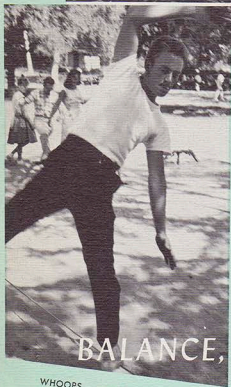


Last stop — the College Center Book Store. With all their books in hand, students are now ready to start a new college year.

A TIME FOR

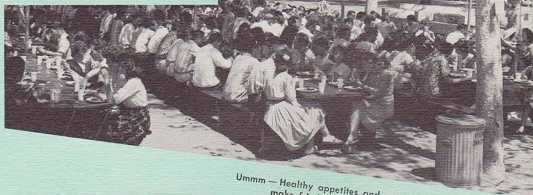
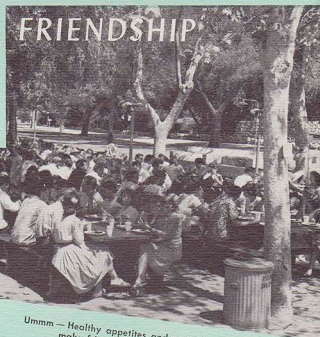
Ambassador's picnics have many activities — eating, playing, sunning, swimming — even hemming. Every spare moment is put to good use.

Have a quick refresher — cool lemonade. There's plenty for all thirsty picnic goers.

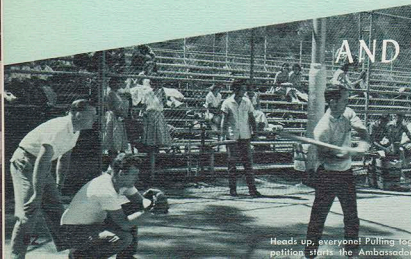


WHOOPS — careful now. Walking a wire proves challenging to many adventurous Ambassadors.

The Freshman Get Acquainted Picnic is the "send off" of a new college year. Strange faces soon become familiar faces and timidity fades as each expresses himself by participating in swimming, ball games, tennis, horse shoe, or trying to walk the tight rope. Ambassador is fast becoming their new home.



Ummm — Healthy appetites and natural outdoor beauty make fried chicken seem twice as good.

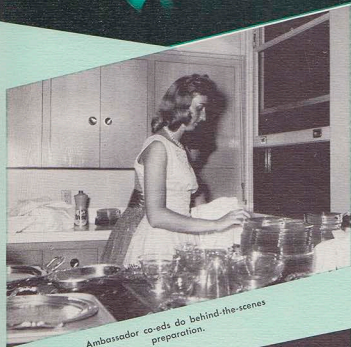
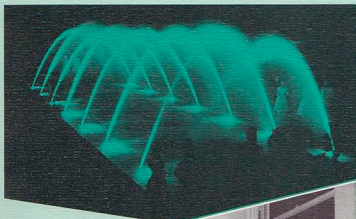


Heads up, everyone! Pulling together as a team under stiff competition starts the Ambassador College school year off right.

A warm and lasting acquaintance between faculty and students begins as the college year opens with its gala Faculty Reception. Beautiful music resounded from Ambassador Hall as colored floodlights blazed across the campus. Hundreds admired the newly completed water fountains and their mirrored reflection in the pool.

Let's get acquainted! No longer states apart, freshmen students start warm friendships.

Passers-by on South Orange Grove Boulevard are attracted by the splendor and beauty of this magnificent sight at night. Towering above the heads of guests, glistening fountains add an atmosphere of dignity.

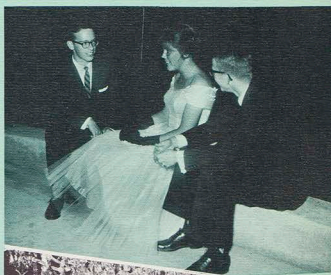


Ambassador co-eds do behind-the-scenes preparation.



A discussion of events of the college year in the formal atmosphere of the Faculty Reception.

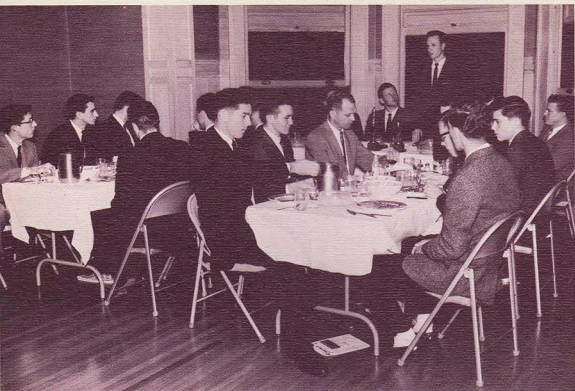
FACULTY RECEPTION



Ambassador Hall's dazzling chandelier reflects rainbows of color from the lighted Italian fountain. The white Oriental rugs richly complement this room of deep Peruvian mahogany.



An elegant setting—the sunken gardens at night with majestic Ambassador Hall in the background. Fountains send streams of brightly lighted water high into the air.



"Is there any new business?"
President Craig asks members
of one of the eight men's
Ambassador Clubs.



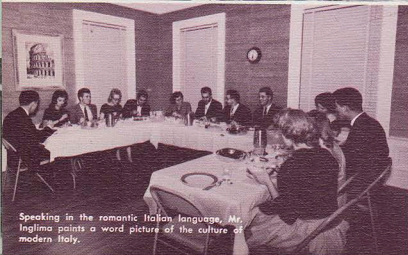
AMBASSADOR AND



It's a joyful time, when the Russian Club gathers around
the piano and sings favorite folk songs.



Mr. Pestana tells the Portuguese
members about his native land,
"A small, picturesque country, filled
with gay costumes and colorful
flowers."



Speaking in the romantic Italian language, Mr.
Inglisma paints a word picture of the culture of
modern Italy.

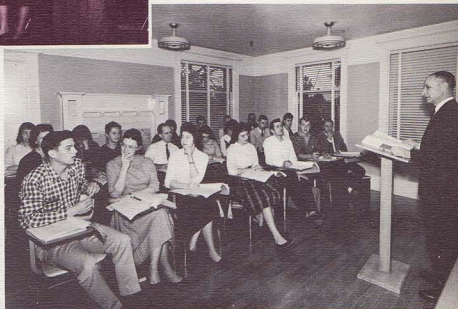


Eins, zwei, drei! The German Club sings a fast and lively polka.

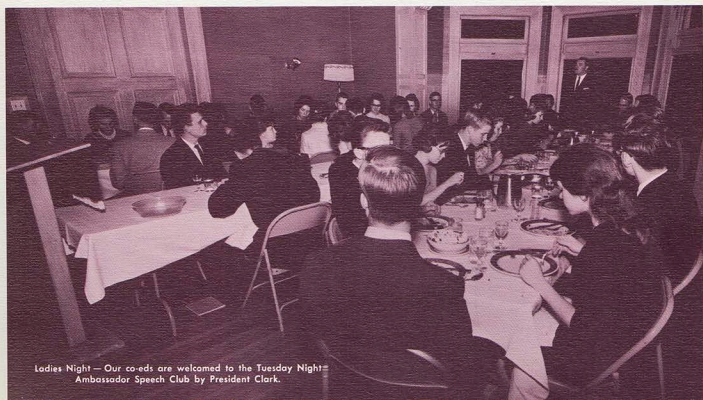
Learning French is not easy, as Ivan discovers in his response, "Oui, Monsieur," to Mr. Apartian's question.



Smiles beam in the men's Spanish Club as the Best Speaker's Trophy is awarded to a freshman.

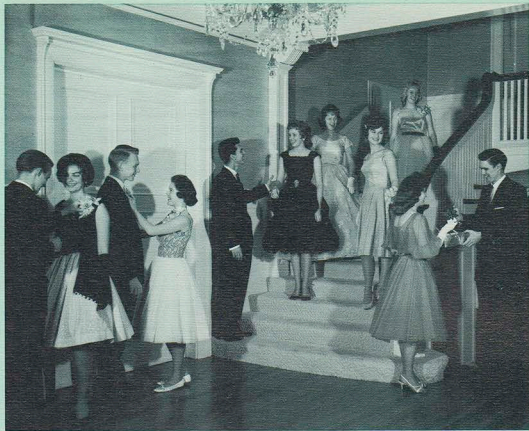


LANGUAGE CLUBS



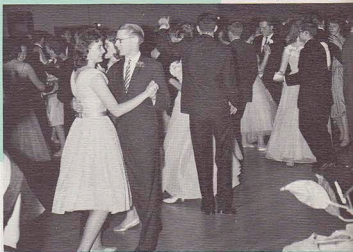
Ladies Night — Our co-eds are welcomed to the Tuesday Night Ambassador Speech Club by President Clark.

UNDER THE STARS



A night to be remembered commences with these beaming faces. Flowers are exchanged and faces light up with joy. An evening of dancing, gaiety and laughter is about to begin, which will long live in the memories of every Ambassador student.

The Sophomore and Ministerial Dances were among the most enjoyable evenings of the college year. On the nights of November 22 and January 11, students and faculty stepped out with their partners to the Moose Lodge in Glendale for an occasional "John Paul Jones" as well as the usual ballroom dances. A dessert of delicious Danish pastry kept everyone coming back for seconds.



The Moose Lodge sparkles with smiling faces as everyone puts his best foot forward and dances the two step. Waltzes, cha cha chas, fox trots, rumbas and sambas, plus a fast polka make the evening pass quickly.



A full panoramic vista of the dance and its vast sea of people spreads out before musical entertainers on stage.



The vim and vigor of bygone days is recaptured by our barbershop quartet.



"Bugler's Holiday" flows out through these trumpets as students give the orchestra a break.



A real live rock and roll show? It's all in fun as laugh after laugh responds to an attempt to "demonstrate" this modern fad.



A picturesque ballad lends itself to the setting of beautiful music and dancing.

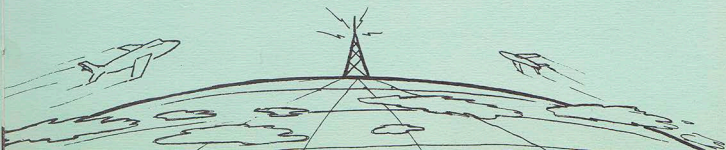


Melodious voices bring back scenes of a snowy wintertime.



Tense moments are brought to life! The frantic, hair raising account of "Driving Instructor Meets Woman" is portrayed vividly. Nerves are frayed on every corner and stretch of the way. After a treacherous ride, persistence wins out with the lingering words, "When may I take my next lesson with you?"

AROUND THE WORLD





"ISLAND OF ROMANCE"

Santa Catalina Island, just a few miles off shore, is our destination. A two hour ride by boat and a hearty lunch of cold chicken with all the trimmings. All arrive safe, sound and "raring to go."

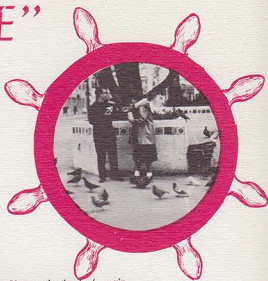
Boarding the "Magic Isle" for Santa Catalina.



It's only an electric car, but it will travel Avalon's city limits—the only area open to public driving.

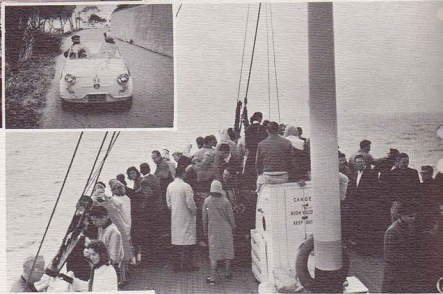


Houses built from ship hulls, Spanish haciendas and Indian styled houses fill Avalon, the city recapturing the atmosphere and beauty of "Early California Days."



Pigeons in Avalon's main square are grateful for the nearby popcorn stand.

Land ho! Our first view of the island from the bow.



The gorgeous colors on the deep Pacific end an eventful day.



Ummm. A drumstick meets Mr. Clark at sea.





Mike and Marilyn head for the hilltop for another toboggan ride.



The bus is a mile away but fresh mountain air renews vigor and enthusiasm.



Five in a chorus line accompanied by accordionist Dorothy Ochs

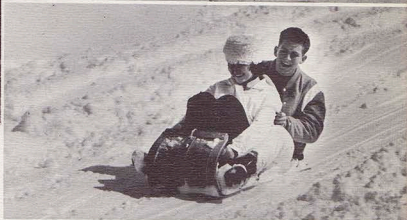
"Shall we call him Parson Brown?"



Delicious hot chili, steaming spiced punch, delectable potato salad and buttered French bread nourished and fed the hungry.



Hill-climbing, the non-professional way, is demonstrated by Ernie.



Wheel! Away we go!

One, two, three, HIKE!
A football scrimmage
in the snow.



SNOW CAPERS

Ski enthusiasts glide along the ski trails as wind and snow wash their faces. Just across the range, toboggans slide down the slick run — producing thrills and laughter. In the late afternoon, snowflakes blanketed the area. Amid this snowy setting an entertaining talent show was presented — a finale for the day.

"I Hear Music--"

Time for a tune up.



Fellows get into the act — harmonizing for a Saturday night's gathering in Ambassador Hall's "Rec" Room.



Nimble fingers produce beautiful melody.



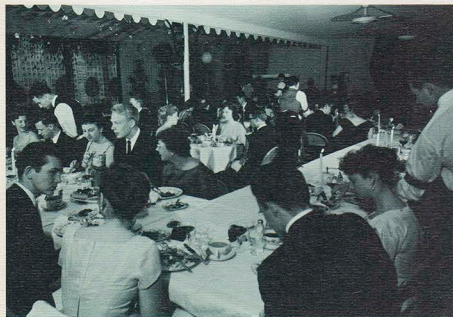
... Singin' our song — side by side by side



Any place is the place for music — even at an outdoor picnic.



Any place is the place for music — even at an outdoor picnic.



A "Gay 90's" atmosphere delights Chorale members as they banquet amidst turn-of-the-century decorations in the Assembly Hall.



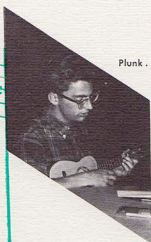
Fe, Fi, Fiddle I Oh!... a cozy fire adds warmth to the Recreation Room as songsters blend their voices around the hearth.



Sounds good!!



... others
"entertain"
elsewhere.



Plunk... plunk.



"Southern Bells" unite in beautiful melody to the enjoyment of those gathered for Mayfair's Southern Plantation Dance.



"Would you like to hear an original recording by the great Caruso?" Music rings throughout the home of Mr. Herbert W. Armstrong as the entire Music Appreciation class gathers for an

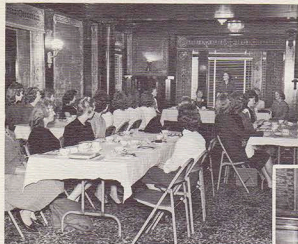


When you sing... sing with your WHOLE heart.

Ambassador

Women's Club

Welcoming the Club is just one of the hostess' many responsibilities. One responsibility is developing an appropriate topic into a lively and informative program. A co-hostess assists in planning the program, assigning speakers and appointing special committees.



The speaker is "one who knows" and can demonstrate as well as answer the eager questions of the attentive listeners.



Demonstrations add clarity and zest to the program and develop a more personal interest in the topic presented.



"Women, better able to serve God through hospitality, culture, and femininity," is the theme woven into all activities of Women's Club. This thread is apparent in the topics chosen for each bi-monthly meeting, topics such as good grooming, nutrition and fashion. It weaves graciously through the special programs and through the welcoming Tea planned for the ministers' wives during the January Conference. Every activity is designed to encourage sincere warmth, poise and social experience. Each member has the opportunity of being hostess at one meeting and sharing the responsibilities it entails.



Tea Time

Friendliness and sociability are the keynotes to this Tea. Meeting and becoming acquainted with the ministers' wives and other guests makes this a very scintillating afternoon. Young women develop and employ poise and the finer social graces in an elegant and hospitable setting.



Annual Brunch

The Annual Brunch in the cool and secluded Lower Gardens. A hearty breakfast of fruit juice, scrambled eggs, beef with mushrooms, hot biscuits and butter, and fruit cobbler with coffee is quickly served by the Women's Club. Faculty and students converse and sign autographs in the '61 ENVOY on this morning of Commencement Day.



The college year is over and students relax, reminisce and discuss plans for the summer.



Thank you, Mr. Armstrong, for the autograph.



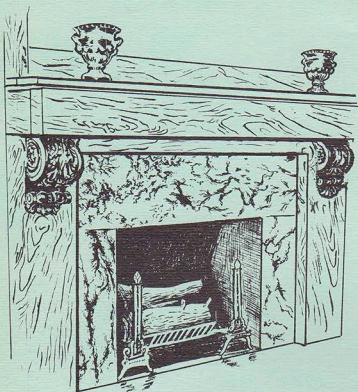
A breakfast with friends.



Our Editor for 1962 signs a new '61 ENVOY.

UNDER

CLASSM

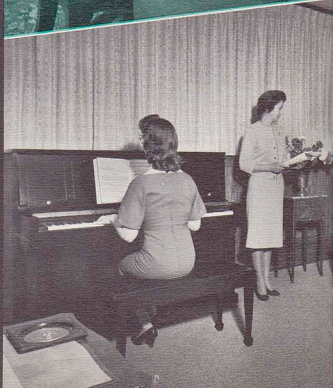


Elegance unequaled — Ambassador Hall's Faculty Dining Room glows with warmth amidst fine rosewoods and beautiful furnishings.

Richly stained teakwoods and masterful paintings provide an outstanding setting for regular classes as well as for quick moments of study throughout the day.

Music rings throughout the studio of Mrs. Martin as students use the music facilities of Ambassador Hall.

"Let's sing." Vocal talent is developed in Mr. Ettinger's walnut paneled studio.







LARRY GENE ALTERGOTT
Windsor, Colorado
COLORADO STATE UNIVERSITY
SOPHOMORE



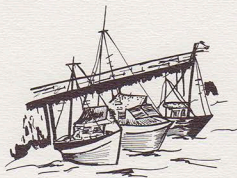
KAREN ANN ANDERSON
Tacoma, Washington
WOODROW WILSON H. S.



SUSAN ARMSTRONG
Pasadena, California
IMPERIAL H. S.



VAL J. ASPENNS
Chicago, Illinois
FARRAGUT H. S.
SOPHOMORE



JERRY LYNN BAKER
Kilgore, Texas
KILGORE JUNIOR COLLEGE



DONNA M. ATKINSON
Coudersport, Pennsylvania
COUDERSPORT H. S.
SOPHOMORE



LIBBY ROSE BAILEY
Middletown, Idaho
MIDDLETON H. S.
SOPHOMORE



MARY JO BAILEY
Amarillo, Texas
PALO DURO H. S.



MADELEINE L. BANSEMER
Brookfield, Wisconsin
BROOKFIELD H. S.
SOPHOMORE



ANNE BARNES
Springfield, Missouri
PARKVIEW SENIOR H. S.



GEORGE J. BARRETT
Wayne, New Jersey
NEWARK COL. OF ENGINEERING



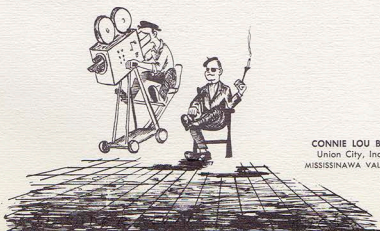
SHIRLEY BATTLES
Pasadena, California
IMPERIAL H. S.

UNDERCLASSMEN



California

The land of date palms, giant sequoias, sprawling orchards, and the Rose Bowl — that's sunny California. Sprawling vineyards, beckoning beaches, snow-clad peaks, and the glitter of Hollywood manifest a productive, plenteous state.



CONNIE LOU BOONE
Union City, Indiana
MISSISSINAWA VALLEY H. S.



PAULINE ANN BAXTER
Bloomfield, New Jersey
BLOOMFIELD H. S.



ROBERT FRANK BERTUZZI
Fredonia, New York
FREDONIA H. S.
FRESHMAN CLASS PRESIDENT



DAVID L. BIERER
Uniontown, Pennsylvania
GENEVA COLLEGE



WILLIAM CLYDE BOST, JR.
Newport News, Virginia
NEWPORT NEWS H. S.



MARIETTA BOXLEY
Newton, Illinois
NEWTON COMMUNITY H. S.
SOPHOMORE



WILLIAM C. BRADFORD
Ponchartroula, Louisiana
PONCHARTRLOULA H. S.



S. ARCH BRADLEY
Sunnyvale, California
SAN JOSE STATE COLLEGE



GINGER ANN BRAMHALL
Hartville, Missouri
HARTVILLE H. S.
SOPHOMORE



ARLENE BUNNELL
New York, New York
WASHINGTON IRVING H. S.
SOPHOMORE



FRED ROBERT COULTER
San Mateo, California
COLLEGE OF SAN MATEO



JOY ANN BRYAN
Baltimore, Maryland
IMPERIAL H. S.



RITA KAY BUTLER
Cortez, Colorado
CENTENNIAL H. S.
SOPHOMORE



LAURA JEAN COUNTS
Proy, Montana
PARK COUNTY H. S.
SOPHOMORE

UNDERCLASSMEN



CHARLES EMERY BRYCE
Timpson, Texas
TIMPSON H. S.



GERALD ROY CROSSELL
Longview, Texas
IMPERIAL H. S.



CAROLE JEAN COX
Jonesville, Louisiana
BLOCK H. S.
SOPHOMORE



ALLEN DALE BULLOCK
Irving, Texas
IRVING H. S.



NORMA JEAN COKOMATCH
Republic, Pennsylvania
REDSTONE H. S.

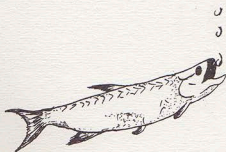


CLEDE DEAN COX
Jonesville, Louisiana
IMPERIAL H. S.



Pacific Northwest

Lumbering pines, towering firs, rushing streams fuse in the fertile, green valleys from the craggy slopes to form the scenic Pacific Northwest. Ambassadors from the Pacific Wonderland have seen Nature in its purest form.



DAVID A. DAHLGREN
San Gabriel, California
IMPERIAL H. S.



CHARLES RONALD CRAIN
Gladewater, Texas
IMPERIAL H. S.



SONJA DANE
Roseville, California
ROSEVILLE UNION H. S.



MARY ELLEN CRITTENDEN
Muskogee, Oklahoma
MUSKOGEE CENTRAL H. S.



FRED DAVIS
Tucumcari, New Mexico
SAN JON H. S.



KAREN KAY CURTIS
Oak Creek, Colorado
AMERICAN SCHOOL



HILDA JOY DAVIS
Jackson, Mississippi
FOREST HILL H. S.



SALLY ELLEN DAVIS
Duval, Washington
SEATTLE UNIVERSITY
SOPHOMORE



GARY SWAN DEMAREST
Old Tarpon, New Jersey
NORTHERN VALLEY REGIONAL H. S.
SOPHOMORE



CHARLENE SUE DOUGLAS
Gary, Indiana
HORACE MANN H. S.
SOPHOMORE



ROBERT DICK
Pasadena, California
IMPERIAL H. S.



ELLEN ARLENE ELDRED
Puyallup, Washington
PUYALLUP H. S.



CHARLENE D. DIEM
Ottawa, Illinois
OTTAWA TOWNSHIP H. S.
SOPHOMORE



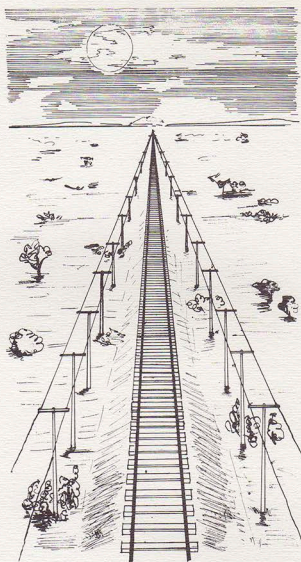
EVA ELLIOTT
Boliver, Missouri
BOLIVER H. S.
SOPHOMORE



JAMES R. DOAK
Amarillo, Texas
MORSE H. S.
SOPHOMORE



GARY WAYNE ERVIN
Kenosha, Wisconsin
KENOSHA H. S.
SOPHOMORE



Great Plains

"O beautiful... spacious skies... for amber waves of grain" aptly describes America's Great Plains. Rolling hillsides speckled with grazing herds and waving fields of golden wheat testify to the enormity and greatness of America's breadbasket.



LAWRENCE EVANS
Bloomington, Illinois
BLOOMINGTON H. S.



LEW PAUL FLATT
Cookeville, Tennessee
CENTRAL H. S.
SOPHOMORE



STEVEN JOSEPH GRAY
Lake Oswego, Oregon
LAKE OSWEGO H. S.



JAMES MCKELVY EWING
Seattle, Washington
QUEEN ANNE H. S.
SOPHOMORE

UNDERCLASSMEN



WILLIAM G. FREELAND
Denison, Kansas
DENISON RURAL H. S.



JUDITH ANN GUNTER
Bend, Oregon
KENNEWICK SR. H. S.
SOPHOMORE



ROBERT E. FAHEY
Cleveland, Ohio
FENN COLLEGE



JOAN GOODSON
Gravelly, Arkansas
FOURCHE VALLEY H. S.
SOPHOMORE



JAMES G. HAINZ
Milwaukee, Wisconsin
SOUTH DIVISION H. S.
SOPHOMORE



JULIUS FINK, JR.
Tacoma, Washington
LINCOLN H. S.



ROBERT L. GRAY
Milwaukee, Wisconsin
ST. LOUIS UNIVERSITY



DeLEE E. HANS
Turner, Oregon
CASCADE UNION H. S.
SOPHOMORE



RONALD GENE HANSON
Williamsburg, Michigan
TRAVERSE CITY SR. H. S.



DONNA SHARON HEDGE
Wicks, Arkansas
WICKES H. S.



SARAH HANSON
Longview, Texas
IMPERIAL H. S.



PAULA HEGVOLD
Pasadena, California
IMPERIAL H. S.



DALE HANWAY
Columbus, Nebraska
UNIVERSITY OF NEBRASKA



LINDA MARIE HERZOG
Waco, Texas
WACO H. S.



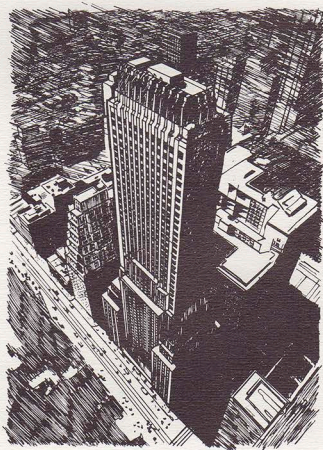
SHARON DAWN HAYNES
Butler, Indiana
BUTLER H. S.



TONY D. HESKET
Oxford, Kansas
ARKANSAS CITY JR. COLLEGE

Great Lakes Region

Tall wind-blown rows of corn, dairy cattle feeding on peaceful, rolling lowlands are contrasted in the Great Lakes states by steel mills belching continuous clouds of black smoke.





HELEN RUTH HOHERTZ
San Angelo, Texas
WALL H. S.



C. ROY HUNTER
Los Angeles, California
IMPERIAL H. S.



BETTY GAYLE JOHNSON
Palos Park, Illinois
CARL SANDBURG H. S.
SOPHOMORE



MARCIA S. HOUGHTALING
Miami, Florida
DADE COUNTY JR. COLLEGE



KEITH M. HUNTER
Kansas City, Missouri
SOUTHWEST H. S.

UNDERCLASSMEN



JON HUGH JOHNSON
Kewanna, Indiana
KEWANNA H. S.



JANIE HUFFMAN
Beaverton, Oregon
HILLSBORO UNION H. S.



LLOYD J. JAMES
Golden, Colorado
GOLDEN H. S.



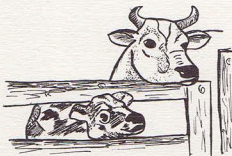
LANCE E. JOHNSON
Knox, Indiana
KNOX COMMUNITY H. S.



DAVID GEORGE HUNSBERGER
Ionia, Michigan
IONIA H. S.



WERNER O. JEBENS
Hamburg, Germany
SCHLEE SCHULE, HAMBURG



JANET CYNTHIA JONES
Greenford, England
MANUEL DOMINGUEZ H. S., CALIF.



JERALDINE ANN JONES
Ebensburg, Pennsylvania
CENTRAL CAMBRIA JOINT H. S.
SOPHOMORE



ARTHUR W. LANDING
Chula Vista, California
SAN DIEGO STATE COLLEGE



EMIL MICHAEL LEVY
Oak Park, Illinois
DRAKE UNIVERSITY
SOPHOMORE



CAROL M. JUDY
Fresno, Ohio
BALTIMORE H. S.
SOPHOMORE



BERNICE LAVONNE LANGE
Hamilton, Texas
HAMILTON H. S.
SOPHOMORE



ALDAH ELLEN LINDGREN
Escalon, California
ESCALON UNION H. S.



GEORGE H. KEMNITZ
Milwaukee, Wisconsin
RUFUS KING H. S.
SOPHOMORE CLASS PRESIDENT



BOB LAY
Kellerton, Iowa
IOWA STATE UNIVERSITY
SOPHOMORE



DOUGLAS DEAN LINDY
Eugene, Oregon
UNIVERSITY OF OREGON



CONNIE KOBERNAT
Albuquerque, New Mexico
ALBUQUERQUE H. S.

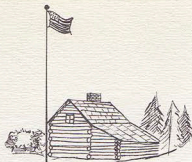


LUCRETIA ANN LEONARD
Longview, Texas
IMPERIAL H. S.
SOPHOMORE



SHIRLEY E. LINDNER
Milwaukee, Wisconsin
MICHIGAN STATE UNIVERSITY

UNDERCLASSMEN



New England States

The quaint, colonial brownstone cottages and graceful stone walls coexist side-by-side with ultramodern skyscrapers, expanding industries, and the honking horns of an exploding metropolis exemplify the active life of the New England area.



LINDA ANN LOVELAND
Duluth, Minnesota
DENFELD H. S.



LEE ANN LIVENGOOD
Columbia City, Oregon
ST. HELENS SENIOR H. S.
SOPHOMORE



DIANA LOUISE MAJOR
Pasadena, California
IMPERIAL H. S.
SOPHOMORE



PEGGY LaRUE LOCHNER
Pasadena, California
IMPERIAL H. S.
SOPHOMORE



NANCY GAYLE MARLING
Paris Crossing, Indiana
INDIANA STATE TEACHERS COLLEGE
SOPHOMORE



DAVID K. LOCKE
Bellingham, Washington
BELLINGTON-EDISON H. S.
SOPHOMORE



JUDITH EVELYN MARSHALL
Paxton, Illinois
PAXTON H. S.
SOPHOMORE



LINDA ANN LOVELAND
Duluth, Minnesota
DENFELD H. S.



ANNETTE MASSEY
Pecos, Texas
PECOS H. S.



KENNETH J. MATTSON
La Mesa, California
HELIX H. S.



ALLEN GERALD MERAGER
Seattle, Washington
BALLARD H. S.



UNDERCLASSMEN



HENRY D. McFARLAND, JR.
Redwood City, California
LINCOLN H. S.



GEORGE EWALD MERZ
Christiansfeld, West Prussia
CLOVERDALE H. S. CALIF.
SOPHOMORE



RONNIE D. McNEIL
High Point, North Carolina
HIGH POINT SENIOR H. S.
SOPHOMORE



WILLIS M. MILLER
Norman, Oklahoma
OKLAHOMA UNIVERSITY



DONALD A. MEADORS
Otwell, Indiana
OTWELL H. S.



RUTH E. NEITSCH
Vernon, B. C., Canada
SCHOOL OF NURSING
ROYAL COLUMBIAN HOSPITAL



CAROL ANN NESTOR
Finleyville, Pennsylvania
MONONGAHELA SENIOR H. S.

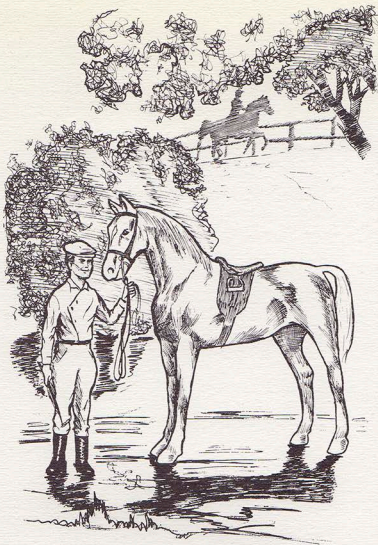


BILLY NETTLES
Douglas, Georgia
SOUTH GEORGIA COLLEGE



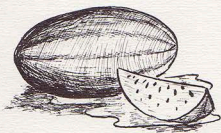
SCARLETT KAY MURPHY
McConnelsville, Ohio
MALTA-McCONNELLSVILLE H. S.

BARBARA OCHS
Milwaukee, Wisconsin
WAUWATOSA H. S.
SOPHOMORE



Blue Grass Area

From the warm, family atmosphere of the "Blue Grass" region come Ambassadors packing nostalgic memories of "cornbread with black-eyed peas and plenty of Southern fried chicken."



EMILY MAY PEASE
East Arlington, Vermont
ARLINGTON MEMORIAL H. S.



JUDY M. OLSEN
L'Anse, Michigan
L'ANSE H. S.
SOPHOMORE



JOHN WILLIAM PETRISOR
Monroe, Washington
U. C. L. A.



ROGER S. PAGEL
Glencoe, Minnesota
GLENCOE H. S.



GARRY D. PIFER
Gays, Illinois
SULLIVAN H. S.
SOPHOMORE



PATSY ANN PATTERSON
Tyler, Texas
IMPERIAL H. S.



DAN WALDO PORTER
Baltimore, Maryland
FRANKLIN SENIOR H. S.



GARY DEAN PRATHER
Boulder, Colorado
UNIVERSITY OF COLORADO





MARILYN JOANNE PRATT
McMinnville, Oregon
McMINNVILLE H. S.



JAMES D. REDUS
Riviera, Texas
RIVIERA H. S.
SOPHOMORE



DONALD LEE PRUNKARD
Washington, Pennsylvania
WASHINGTON & JEFFERSON COLLEGE



WALDO REEDY
Peoria, Illinois
MOODY BIBLE INSTITUTE
SOPHOMORE



DENNIS E. PYLE
Gladewater, Texas
IMPERIAL H. S.



PAULADEA RHODES
Springfield, Missouri
AMERICAN SCHOOL



JEANNETTE ELLEN RAETZ
Mokence, Illinois
MARYCREST BUSINESS COLLEGE
SOPHOMORE



PATSY JOAN RIEGEL
Dodge City, Kansas
DODGE CITY SENIOR H. S.
SOPHOMORE

Southern Sea Coast

This land of sleepy alligators, impenetrable Everglades, and resort-peppered seacoasts holds many attractions for visitors. Ambassadors from this area are accustomed to many land-locked lakes, towering palms, multicolored orchards, overflowing with huge lemons, luscious oranges, and tangy grapefruit.





RONALD RAY RILEY
Coleman, Texas
TARLETON STATE COLLEGE



ALICE MAY ROTHERY
Portland, Oregon
DAVID DOUGLAS H. S.



JUDITH CAROL RUSSELL
Lufkin, Texas
HUNTINGTON H. S.



JEAN MARIE RITKE
Milwaukee, Wisconsin
CUSTER H. S.

UNDERCLASSMEN



MICHAEL EUGENE ROWELL
Corralton, Texas
CARROLLTON H. S.



ROBERT L. SALMON
Brookings, Oregon
MADISON COLLEGE, TENNESSEE



LEONARD ANTHUS ROBINSON
Aransas Pass, Texas
ARANSAS PASS H. S.



JIM JAMES RUDOMETKIN
Alhambra, California
LOS ANGELES CITY COLLEGE



DOROTHY ANN SCHEFFLER
Meadow Grove, Nebraska
MADISON H. S.



DAVID ROENSPIES
Lombard, Illinois
GLENBARD H. S.



BETTY RUPP
Dayton, Pennsylvania
DAYTON JOINT H. S.



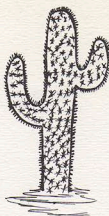
FRANK SCHNEE
Hagen, Germany
PORT CREDIT H. S., ONT., CANADA



IVAN L. SELL
Melvern, Kansas
MELVERN H. S.



SHARON LaVONNE SHEPARD
Modesto, California
THOMAS DOWNEY H. S.



DAVID ELMER SIMPSON
Louisville, Kentucky
LOUISVILLE MALE HIGH



LYLE SELL
Melvern, Kansas
KANSAS STATE TEACHERS COLLEGE



ESTHER RUTH SHREWSBURY
Ulica, Michigan
IMPERIAL H. S.

UNDERCLASSMEN



TERRY A. SMITH
Salt Lake City, Utah
GRANITE H. S.
SOPHOMORE



WALTER SHARP
Leavittsburg, Ohio
WARREN TOWNSHIP H. S.
SOPHOMORE



MARGARET FAY SILVER
Bars Corner, Nova Scotia, Canada
NEW GERMANY RURAL H. S.
SOPHOMORE



OPAL JANICE SPEERS
Sunkist, Oklahoma
PORTERVILLE UNION H. S.



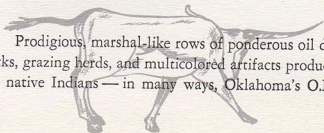
CHARLOTTE YVONNE SHEPARD
Modesto, California
OAKDALE H. S.
SOPHOMORE



JAN SIMMONS
Littlefield, Texas
LITTLEFIELD H. S.

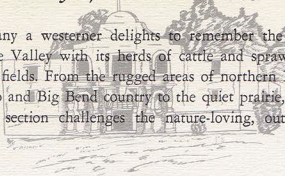
Indian Territory

Prodigious, marshal-like rows of ponderous oil derricks, grazing herds, and multicolored artifacts produced by native Indians—in many ways, Oklahoma's O.K.!



Valley of the Río Grande

Many a westerner delights to remember the Río Grande Valley with its herds of cattle and sprawling cotton fields. From the rugged areas of northern New Mexico and Big Bend country to the quiet prairie, this robust section challenges the nature-loving, outdoor type.



ANITA EILEEN STAMPS
Pampo, Texas
GROOM H. S.



JUNE DOROTHEA STEENSEN
Findlay, Ohio
FINDLAY SENIOR H. S.



BILL STOUGH
San Francisco, California
UNIVERSITY OF CALIFORNIA
SOPHOMORE



ALBERT L. SWEEZO
Anoka, Minnesota
ANOKA H. S.
SOPHOMORE



PAMELA ANN STURMAN
Utica, Michigan
UTICA H. S.



DICK EDWARD SUMMERS
Maab, Utah
MESA JUNIOR COLLEGE



WILLIAM H. SWANSON
Denton, Texas
IMPERIAL H. S.
SOPHOMORE



KAREN OLIVIA THARP
Lynn, Indiana
LYNN H. S.



FRED L. THOMAS
Piedmont, Missouri
CLEARWATER H. S.



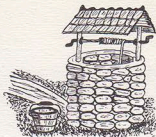
BARBARA JEAN TISCH
Watertown, South Dakota
WATERTOWN H. S.
SOPHOMORE



JOSEPH DAVID TOBIAS
Brownsville, Pennsylvania
BRASHER JOINT H. S.



ANNA GRACE TOPASH
Galen, Michigan
GALLEN TOWNSHIP H. S.



TOM TOUSSAINT
Newport News, Virginia
NORTHAMPTON H. S.



HELEN TRAVIS
Cedartown, Georgia
CEDARTOWN H. S.
SOPHOMORE



LARRY VAN LANDUYT
Pritchett, Texas
IMPERIAL H. S.
SOPHOMORE



DON WATERHOUSE
San Angelo, Texas
IMPERIAL H. S.
SOPHOMORE



CHARLES PALMER VORHES
Bridgeville, Pennsylvania
BUCKNELL UNIVERSITY



LYNDA MALANE WALDEN
Section, Alabama
SECTION H. S.



ANDREA CAROL WANN
Fanshawe, Oklahoma
FANSHAW H. S.



DOLORES MARIE WELCH
Sand Springs, Oklahoma
CHARLES PAGE H. S.



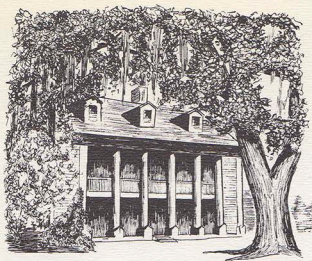
ELAINE ROSE WENZEL
Erie, Colorado
ERIE H. S.



ROGER W. WEST
Eleron, Wisconsin
WITTENBERG H. S.

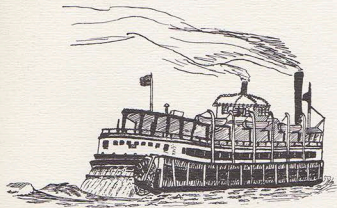


GENE WHITE
Moses Lake, Washington
UPPER COLUMBIA ACADEMY
SOPHOMORE



Southern Sea Coast

The land of riverboats and leisurely fishing—the Mississippi Basin has held its charm throughout the years. Many young men and women have journeyed from this richly historic region to become history-making Ambassadors.



BRENDA JOYCE WILLIAMS
Big Sandy, Texas
IMPERIAL H. S.
SOPHOMORE



GLEN VALDEN WHITE
Seattle, Washington
FRANKLIN H. S.
SOPHOMORE



MILO E. WILCOX
Ypsilanti, Michigan
EASTERN MICHIGAN UNIVERSITY



VIVIAN KAY WILEY
Dallas, Texas
EAST TEXAS STATE COLLEGE



H. WAYNE WILLIAMS
Sun Valley, California
VERDUGO HILLS H. S.
SOPHOMORE



GERALD WITTE
Midland, Texas
MIDLAND H. S.



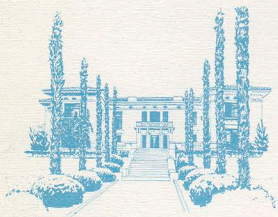
GARNETT A. ZISKA
Ellensburg, Washington
ELLENSBURG H. S.
SOPHOMORE



J. KENTON ZLAB
Modesto, California
CALIF. STATE POLYTECHNIC COLLEGE

the

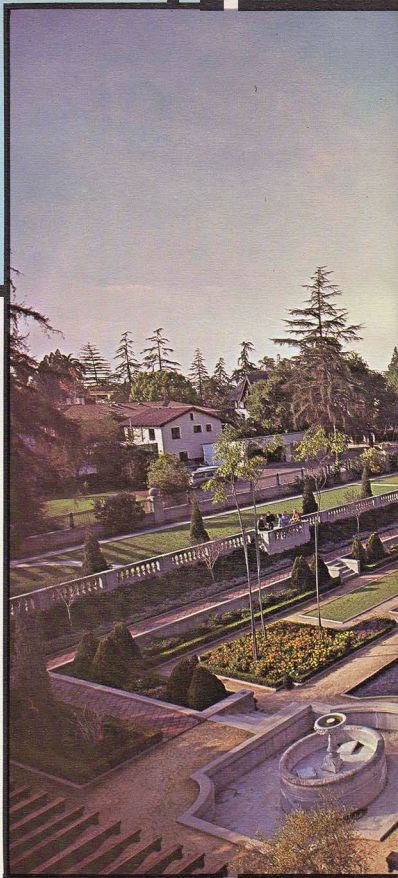
Sunken Gardens of Ambassador Hall



A spectrum of colors greets the eye as students meander through the **SUNKEN GARDENS** for a few relaxing moments before the next class period.

Fountains are illuminated for night scenes. Passing motorists on South Orange Grove Avenue frequently pause a few moments for a better view.

This breath-taking scene is in keeping with the traditional Ambassador College atmosphere of cultural and inspiring grounds to aid in producing a true appreciation of the beauty of nature accentuated by the creative talents of man.





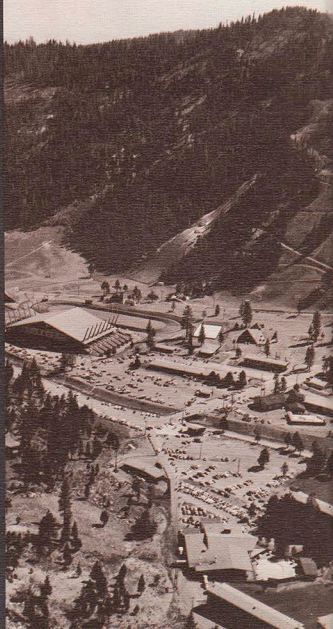
Dazzling autumn colors and brilliant sunshine set the stage for God's annual FALL FESTIVALS. From a handful of festival-goers a decade ago at Belnap Springs, Oregon, the Feast of Tabernacles has mushroomed to over 11,000 in attendance in 1961!

From one small river valley in Oregon, observance has expanded to seven world-wide sites (Australia, the Philippines, California, Texas, England, and Rhodesia). An eight-day period is devoted to worship, fellowship and recreation.

FALL F



The symmetrical slopes of SQUAW VALLEY in Northern California, Blythe Arena and associated buildings used for the 1961 Festival of Tabernacles.

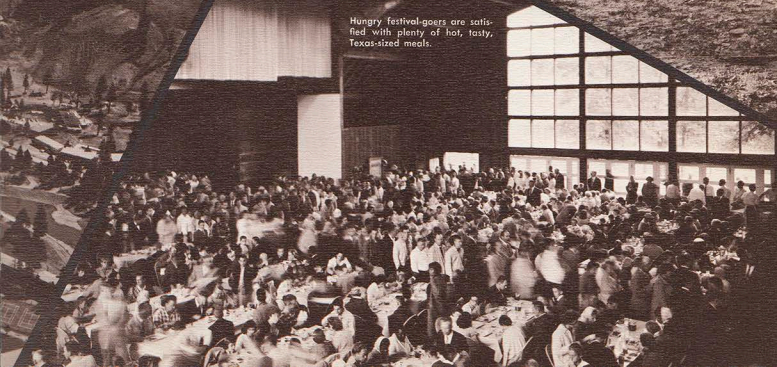


ESTIVALS



The conveniences of home are joined with the peacefulness of the rustic woodland as Texas affords festival-goers a pleasant setting for a temporary home.

Hungry festival-goers are satisfied with plenty of hot, tasty, Texas-sized meals.



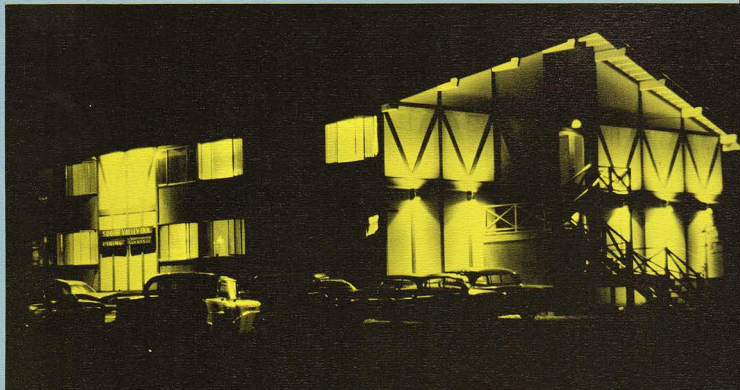
THIS IS WORLD FAMOUS



BLYTE ARENA, award winning pavilion for the 1960 Winter Olympics, hosts the 1961 Festival of Tabernacles, where over 3,200 members are convened.

SQUAW VALLEY INN, a haven of rest, shines forth as a star in the night sky beckoning weary festival goers to a refreshing sleep for the night.

High on the peak, mountain hikers see SQUAW VALLEY dwarfed like a child's playground in the limitless High Sierras.



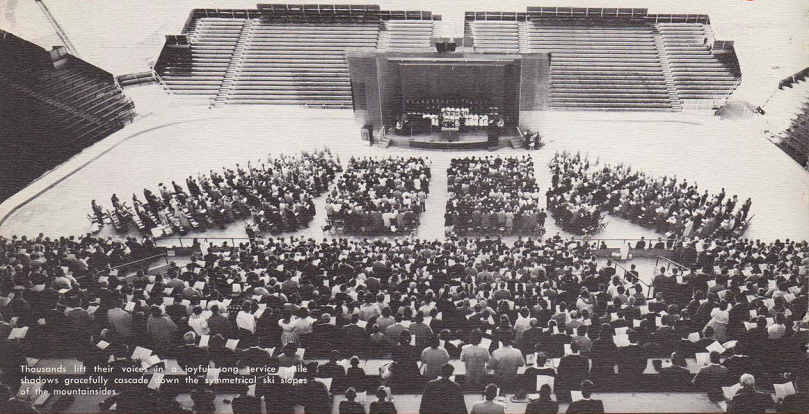
SQUAW VALLEY



Sheltered among the magnificent High Sierra SQUAW VALLEY stretches across the colorful autumn panorama site of the 1961 Festival of Taboracle.

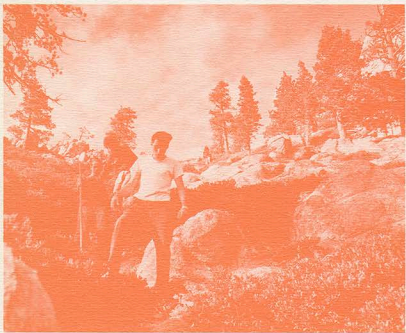
Once the home of the 1960 Winter Olympic games, this fine resort area opened its fabulous facilities to thousands of excited festival goers from the western states.

Eight Event-Filled Days



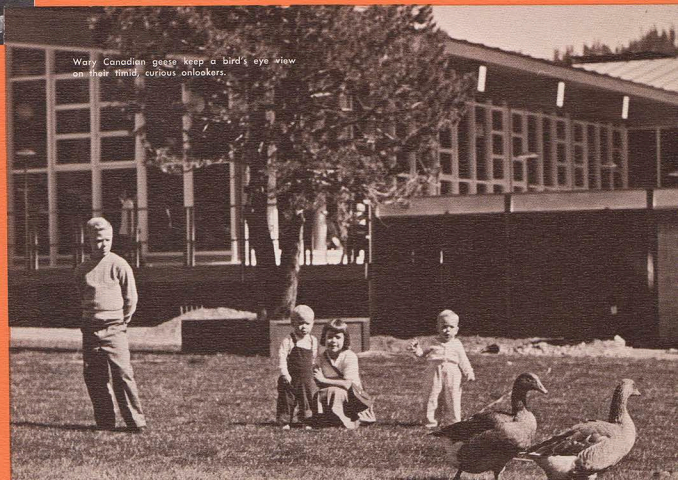
Thousands lift their voices in a joyful song, service, while shadows gracefully cascade down the symmetrical ski slopes of the mountainsides.

Crisp breezes heralding winter's snows whistle through pine boughs as enthusiastic mountaineers meet the challenge of jagged granite peaks.



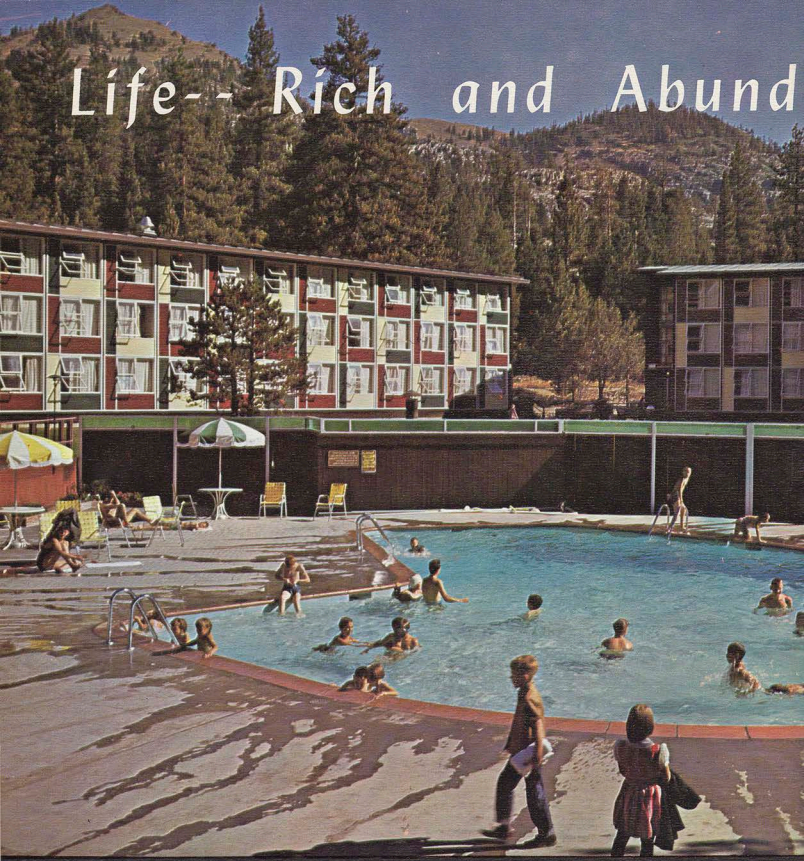


Ultra-modern dining facilities gleam in the warm morning sunlight while thousands are quickly served delicious meals at the OLYMPIC VILLAGE CAFETERIA.



Wary Canadian geese keep a bird's eye view on their timid, curious onlookers.

Life-- Rich and Abundant



A cool stimulating dip in crystal clear mountain waters makes this special resort pool a treat for youngsters and oldsters alike.



ant

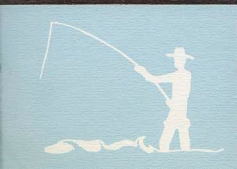


Life is chuck full of activities for all ages. Parties, get togethers, motion pictures, ice skating, and cheerful old fashioned walks in the harvest moonlight make for wholesome memories in the months to come.



Large smiles are in order as mother aids a young cowboy on his first bronco-busting adventure.

"A time for dancing..." at California Center.





Hymns resound throughout the great Tabernacle as more than 7,000 jubilant voices blend in cheerful song.



A HEARTY TEXAS WELCOME!

Speakers convening from states east of the Rockies add flavor and variety to the spiritual meal prepared for this audience of thousands. Here minds are filled with inspiring objectives, charged with zeal, and spurred to action. Life becomes full and abundant. Spiced with wit, analogy, and humor, a thought-provoking feast is enjoyed by an attentive congregation.

In sober concentration, the vast audience records with pen and ink the knowledge and stimulating challenges that are to be used in productive, happy lives.



Memor Moments

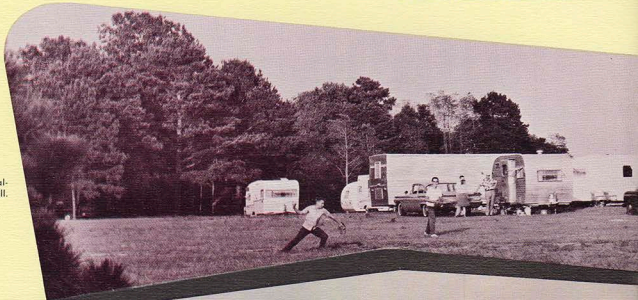


"Let's whirl this one around together."

"Remember the Good Old Days?" The Festival Concert of the Ambassador College Chorale transferred you in time to the golden era of the GAY NINETIES. Bustles, bonnets, buttons, and bows, high collars matched with spats, derbies and handlebar mustaches made a romantically gay and colorful show—a refreshing flashback in American fun and favorite songs.

Joined as one voice and blended as carefully as the light fluffy cakes that grandmother used to make—the Chorale's presentation was a highlight in the festival to be remembered. Under the superb leadership of Mr. Leon Ettinger, this was a most successful Festival Concert.

A "hot" curve ball challenges any batter's skill.



able



Refreshing sermons, old and new friends meeting — a grand feast long to be remembered.

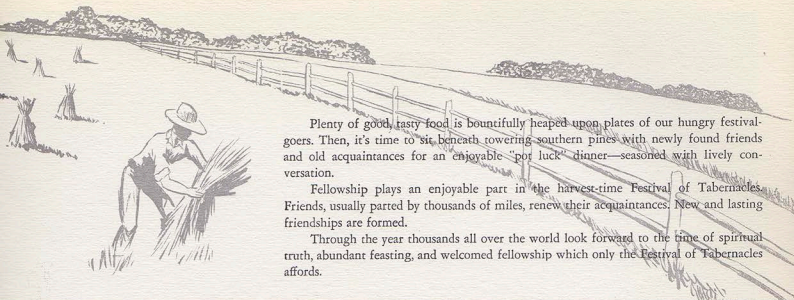


A refreshing dip in Big Sandy Lake combats warm and humid weather that is so familiar to eastern Texas.



Reaping New Friendships





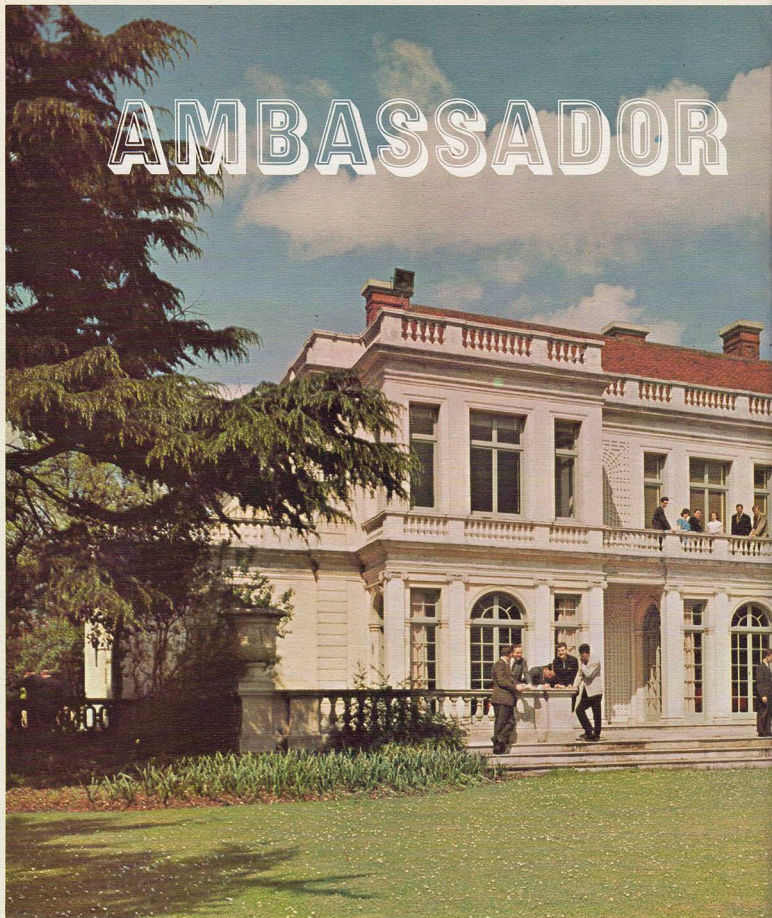
Plenty of good, tasty food is bountifully heaped upon plates of our hungry festival-goers. Then, it's time to sit beneath towering southern pines with newly found friends and old acquaintances for an enjoyable "pot luck" dinner—seasoned with lively conversation.

Fellowship plays an enjoyable part in the harvest-time Festival of Tabernacles. Friends, usually parted by thousands of miles, renew their acquaintances. New and lasting friendships are formed.

Through the year thousands all over the world look forward to the time of spiritual truth, abundant feasting, and welcomed fellowship which only the Festival of Tabernacles affords.

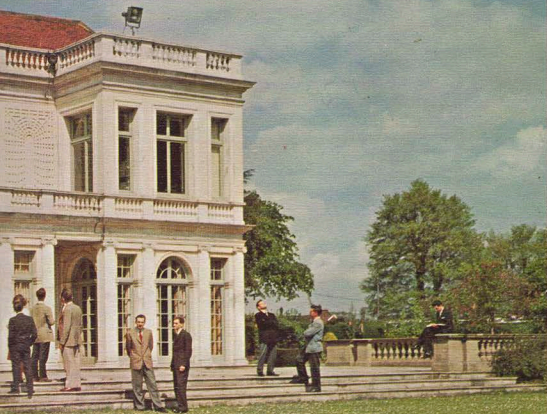


AMBASSADOR



COLLEGE

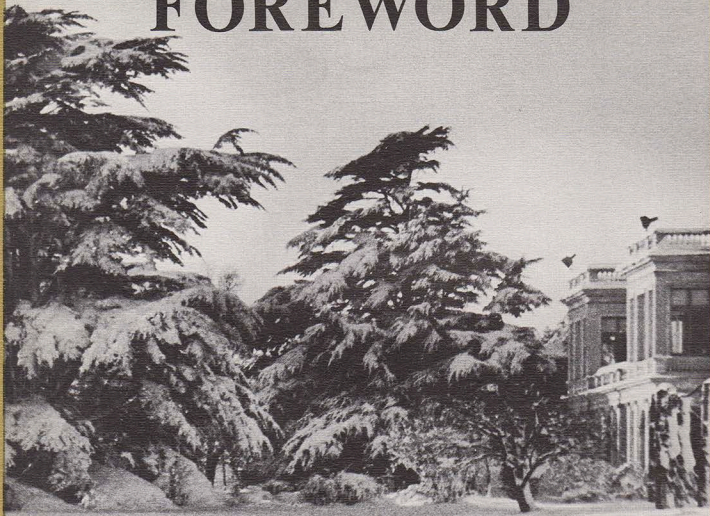
ENGLAND



The 1962 British ENVOY Staff takes pleasure in presenting AMBASSADOR COLLEGE in ENGLAND.

The students gathered here on the south steps and balcony of Memorial Hall, the main classroom building, are enjoying the beautifully decorated gardens and the spacious lawns.

FOREWORD



Tucked away in the quiet outskirts of London's "green-belt" is one of the busiest and most booming enterprises in Great Britain — AMBASSADOR COLLEGE, U. K. Bursting forth from amidst briars, underbrush, empty stables, and bare buildings, this now-thriving institution has doubled in size since it opened its doors to students in the autumn of 1960.

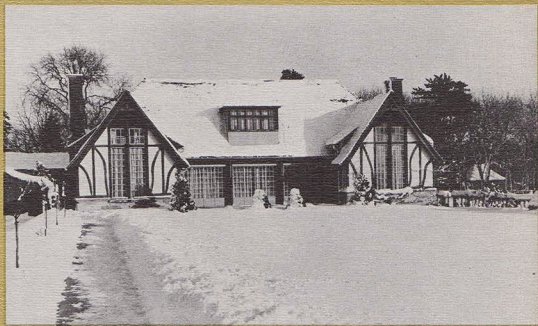
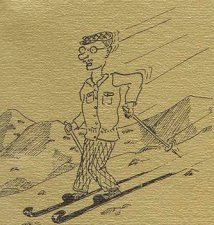
With a growing work in Europe, Asia, and Africa, a need arose to found another Ambassador College to prepare trained personnel to serve the ever-growing list of co-workers with literature and counselling. In early 1960, the offices were opened, temporarily using rooms in Memorial Hall. Then, in the autumn 35 students enrolled for classes, instructed by nine full-time faculty members — and another Ambassador College was born!

Since that time, the College facilities have grown continually. Last autumn the student body swelled to 65 in number — now taught by 15 instructors! Today, we find modern classrooms and an outstanding library in a beautiful and cultural setting. The professional quality recording studios located on the grounds are equipped to take care of radio broadcasting needs far into the future. Besides all this, the greatly expanded office, now occupying its own building, quickly processes the thousands of letters received from the many European and African listeners of THE WORLD TOMORROW program and readers of THE PLAIN TRUTH magazine and the AMBASSADOR COLLEGE BIBLE CORRESPONDENCE COURSE. Just recently, new high-quality printing equipment has been installed in the printing department to facilitate the increasing demand for the many booklets and reprint articles being published.

With the advent of new and more powerful means to preach and publish the true Gospel, we look forward to the rapid and continued growth of this new AMBASSADOR COLLEGE.

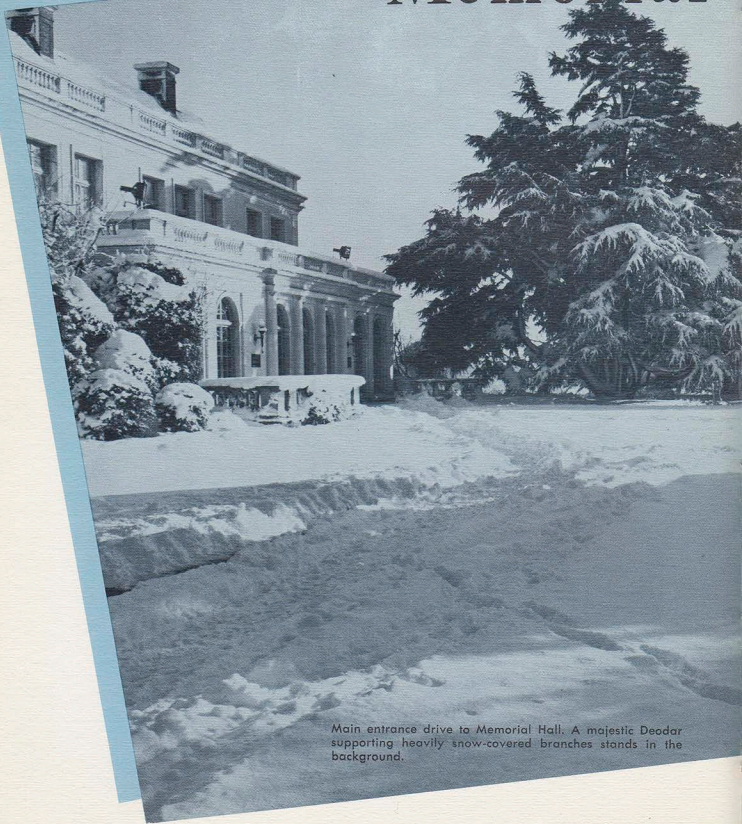


This picturesque, snow-covered footbridge crosses the winding stream in the Japanese Gardens. For pictures of these beautiful Gardens in full color, see pages 162-163.



Here is the Music Hall situated in a wintery scene. For another view of this building in full color in a summer setting, see pages 138 and 139.

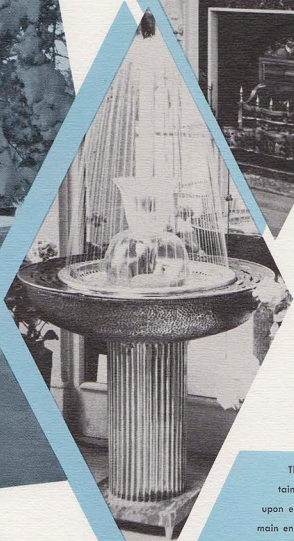
Stately Memorial



Main entrance drive to Memorial Hall. A majestic Deodar supporting heavily snow-covered branches stands in the background.

Hall

Mr. Richard
D. Armstrong's
portrait keeps
silent watch in
Memorial Hall.



This sparkling fountain welcomes you
upon entering the
main entrance.

FACULTY



DR. BENJAMIN REA
PRINCIPAL

Professor of Theology, Spanish,
and International Relations.
Speaker for *El Mundo de Manana*,
The World Tomorrow Radio Program
in the Spanish Language.



ERNEST L. MARTIN

College Registrar.
Professor of History, Geography.
Instructor in Theology, Speech.



RAYMOND F. McNAIR

Pastor, Churches of God
in Great Britain.
Instructor in Speech.
Men's Guidance Counsellor.

CHARLES F. HUNTING

Controller and Manager of the
Business Department.
Instructor in Theology, Tennis.
Director of Physical Training.





DR. KENNETH ABBOTT

Head of the Music
Department.
Instructor in Voice
and Music.
Director of the
Ambassador Singers.



Music Department



HARRY W. HOLYOAK

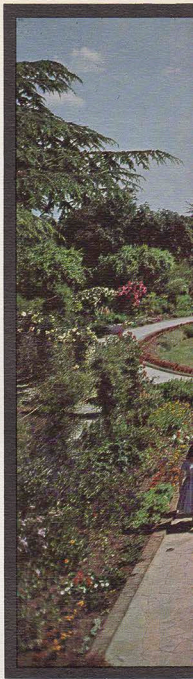
Instructor in Instrumental Music

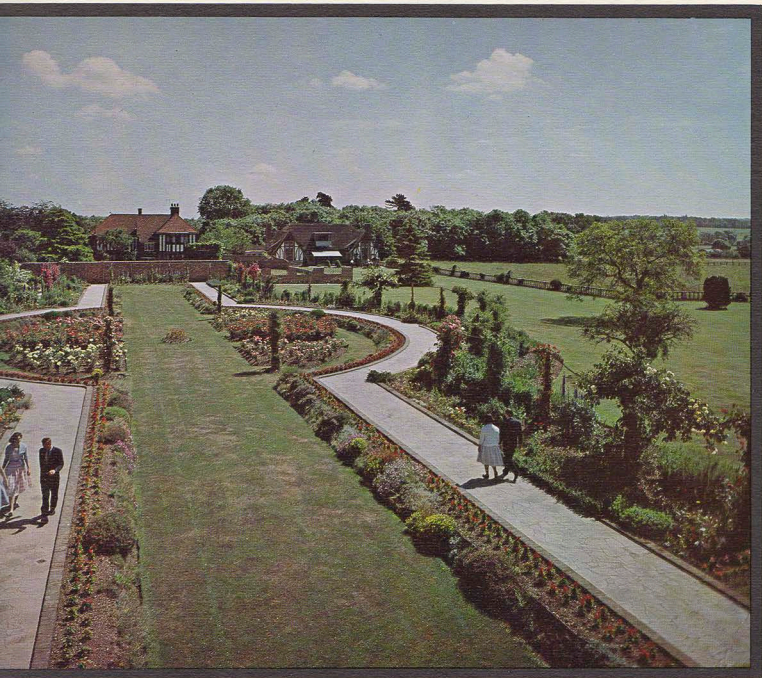
GEOFFREY E. SHAW

Instructor in Voice

K. STAVRINIDES

Instructor in Violin

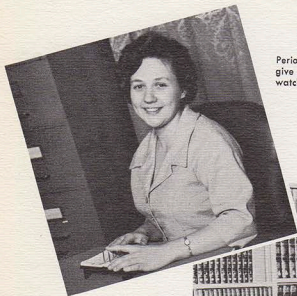




Above: The building on the right was formerly the "Hunting Lodge" of the Yule Estate. By completely remodelling the inside, an ample assembly hall and a practice room has been made available on the ground floor. The upper floor is partitioned into three studios to accommodate a variety of musical study. The Music Hall is situated beyond the sunken gardens, providing an enjoyable and refreshing walk for students going to and from classes.

Left: Artists' sketch viewing the Music Hall from the east.





SHIRLEY A. JONES

Librarian.
Instructor in
Library Science

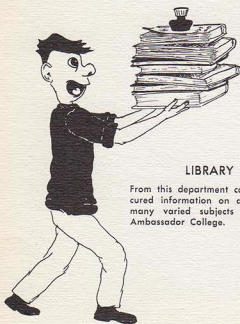
PERIODICAL STAND

Periodicals from around the world
give students every opportunity to
watch world news.



REFERENCE ROOM

Besides the Britannica and Americana, students have ready access to French, German and Spanish encyclopedias. Bible helps and many other reference works are also available.



LIBRARY

From this department can be procured information on any of the many varied subjects taught at Ambassador College.





LEON WALKER

Secretary to the
Principal. Office
Manager of Spanish
Department. Instructor
in Typing, Spanish.



JAMES WELLS

Assistant Registrar.
Letter Answering
Department.



ROBERT C. BORAKER

Director of Letter
Answering Department.
Editor of CHURCH OF
GOD NEWS, British
Edition. Instructor
in Journalism and
Typing. ENVOY and
PORTFOLIO Advisor.



GERHARD O. MARX

Associate Editor
of DIE REINE WAHRHEIT.
Manager of German
Department in Britain.
Instructor in German.

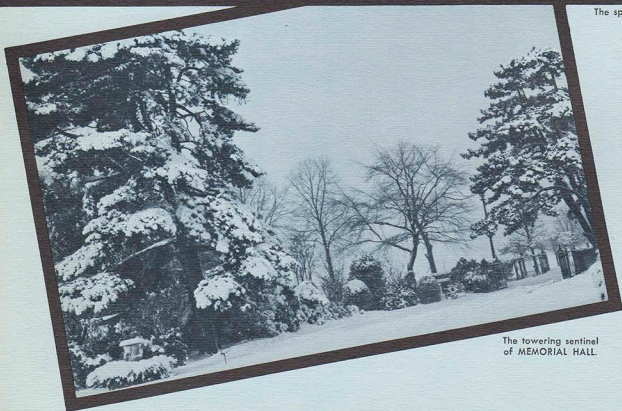
DAVID P. WAINWRIGHT

Professor of English,
Composition, Literature,
and French.
Office Manager
of French Department
in England.

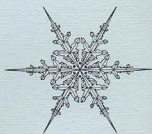




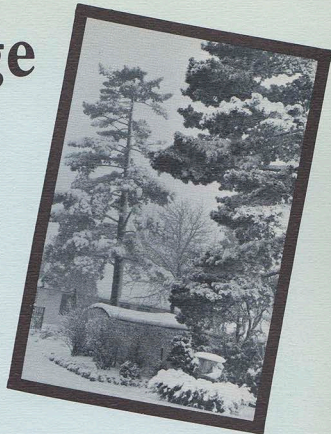
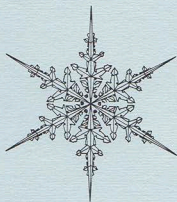
The sparkling mantle of the Mall.



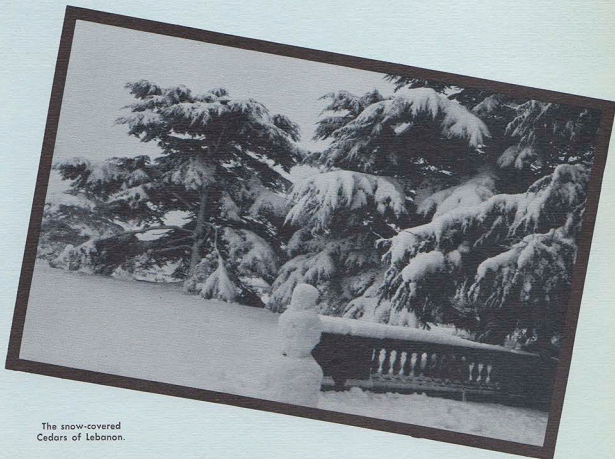
The towering sentinel
of MEMORIAL HALL.



The College Carpet...

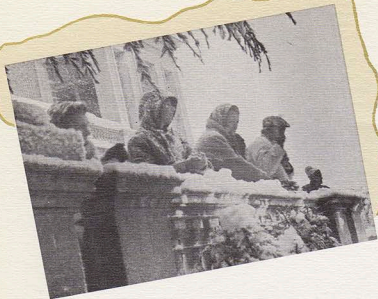


The snug Aviary across
from the Formal Gardens.

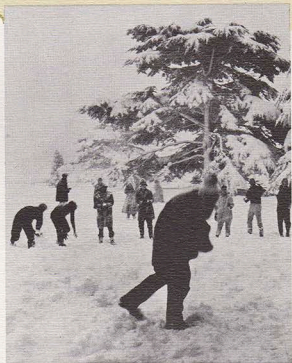


The snow-covered
Cedars of Lebanon.





Snow on the Grounds



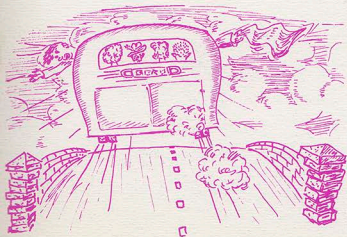


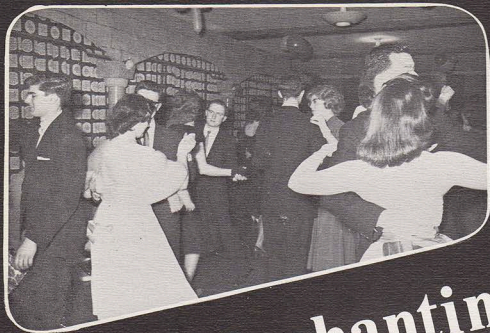
SPORTS
DAY
1961.



Student Activities

FIELD TRIP
to Houses of Parliament





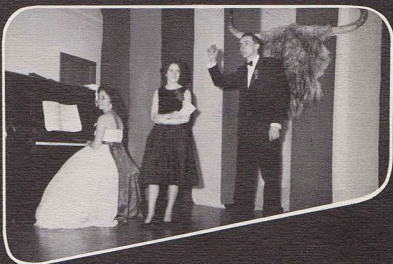
Enchanting



End of Term Dance.

The Music Hall was transformed into a breath of Spain, complete with a "Senor and Senorita" mural and Spanish rebels turning up at the intermissions.

Scenes of a memorable evening for Ambassador co-eds. Our dances keynote various themes and even places - Spain, for instance. An invigorating evening, scintillating conversation, and tasty refreshments for all.



Evening





From left to right: Frank Brown, First Year Class President; Ingrid Satermo, Secretary; Dennis Pebworth, Student Body Vice-President; Robin Jones, Student Body President; Edward Smith, Third and Fourth Year Class President; Jeanne Haley, Women's Representative; and Michael Bousfield, Second Year Class President.

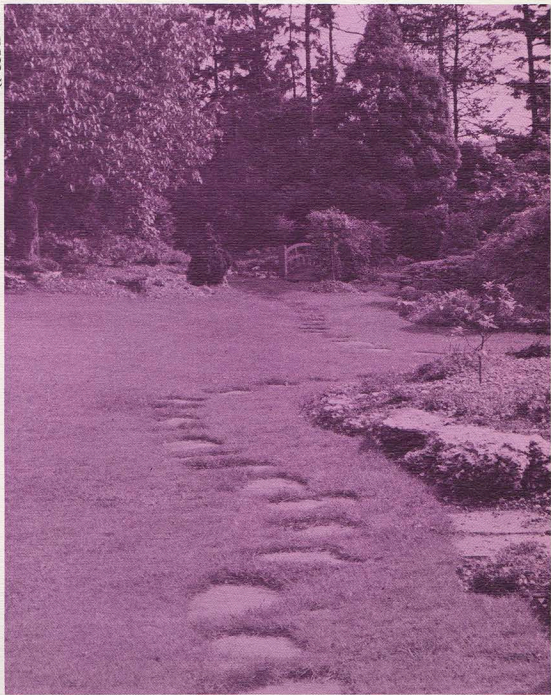


The Student Council

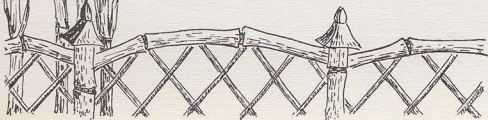
What do the members of the Student Council do?

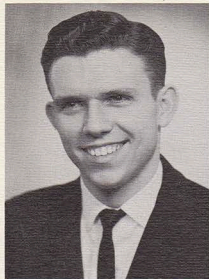
Each week the Class Presidents and the Women's Representative met with the President and Vice-President under the supervision of two faculty members to discuss student problems and to plan future student activities.

THE 1962 UPPER CLASS



These stepping stones form the winding path that leads down into the Japanese Gardens and to the wooden footbridge.





DENNIS PEBWORTH
Dodge City, Kansas,
U.S.A.

Student Body Vice-President
... Lecturer in Piano ... Vice-
President of Wednesday Am-
bassador Club ... President
of Spanish Club ... Sermon-
ettes and Visiting Program.

GERHARD O. MARX
Hagen, Germany.

Pioneer Student of Ambassa-
dor College in England...
Faculty Aide... Manager
German Department...
Associate Editor of DIE REINE
WAHRHEIT... PORTFOLIO
Staff... Sermonettes and
Visiting Program... Baptis-
ing tour in Germany and
Austria.

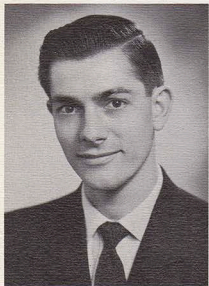


4th Year Students



ROBIN G. JONES
Epsom, Surrey.

Pioneer Student of Ambassador College in Eng-
land. Student Body President 1961 and 1962.
PORTFOLIO Staff 1961, Editor 1962. Sermonettes
and Visiting Program. Baptising Tours in British
Isles.



BENJAMIN R. CHAPMAN
Woodland Hills, Calif., U.S.A.

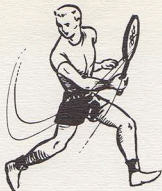
Pioneer Student of Ambassador College in Eng-
land. Manager of the Recording Studios. President
of Monday Ambassador Club. Editor of 1961 and
1962 ENVOY (English Section). Sermonettes and
Visiting Program. Baptising Tour in British Isles.

The Graduating
Class of 1962.
These students
can look forward
to a busy and
enjoyable future
in the Work.





Jack M. Pyle
Gladewater, Texas, U.S.A.



Ingrid E. Satermo
Seattle, Washington, U.S.A.



The third year Students have one more year of training at Ambassador College before they assume their life vocations.



Edward Smith
Lambeth, London.
Third and Fourth Year
Class President

3rd Year Students



LEFT:

Janet V. Barnett
Searcy, Arkansas,
U.S.A.

CENTER:

Colin J. A. Wilkins
St. Albans,
Hertfordshire.

RIGHT:

Jeanne A. Haley
Salem, Indiana,
U.S.A.



SPECIAL!

3 Di



The
GOOD
NEWS
Shall
be...

PRINTING DEPARTMENT

This department, under the capable direction of John Jewell, employs one full time person—H. Hoffmann, at press to left—as well as many students. John Butterfield, at the center press, is a late addition to the student body. His wife works part time as the department's secretary.

RECORDING STUDIOS

These modern studios, under the direction of Benjamin Chapman, are used to record *The World Tomorrow* and *El Mundo de Manana* radio programs.



and...

to all
the
World.

Dimensional Pictures

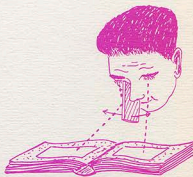
PUBLISHED



PREACHED



INSTRUCTIONS

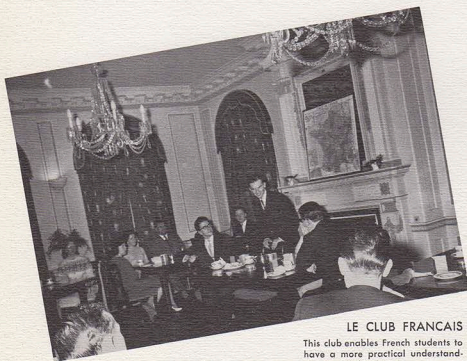


1. Stand directly over the pair of pictures you wish to view, about 12 to 18 inches away.
2. Hold a small hand mirror next to your right eye, alongside your nose, as shown in the sketch.
3. Now tilt the mirror until the reflected image in the right eye coincides with the image received in the left eye.



One of the formal after dinner
speech clubs for Ambassador men.

AMBASSADOR CLUB



LE CLUB FRANCAIS

This club enables French students to
have a more practical understand-
ing of the language.



Clubs



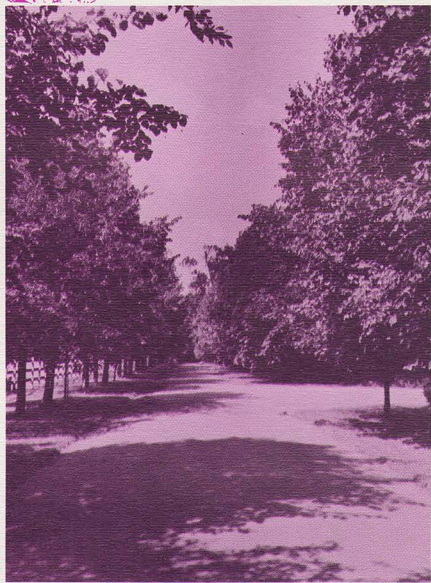
WOMEN'S CLUB

This club helps the ladies to develop poise and personality and to be proper hostesses.



The combined Monday and Wednesday Night Ambassador Clubs honor the ministers and their wives with a formal banquet.

THE 1962 SECOND YEAR CLASSES



The Mall, the Main Entrance Drive to Ambassador College, is lined on each side with Flowering Cherry Trees. Each spring they are filled with fragrant pink and white blossoms. A quiet, peaceful scene?

One would never guess that on each week-day morning, this tranquility is interrupted by the stomping of sixty-some pairs of feet — Ambassador students participating in Physical Training!!



Michael A. Bousfield
Johannesburg, South Africa.
Second Year Class President



Peter Nichols
Bristol, Gloucestershire.



Michael W. Barlow
West Ham, London.

John M. Sanderson
Vumba Mountains,
Southern Rhodesia.



Gunar Freibergs
Cooma, N.S.W., Australia.



William F. Cable-Scott
Woking, Surrey.



William T. Coupland
Nuneaton, Warwickshire.





Desmond Seaton
Newtownabbey, Co. Antrim,
N. Ireland.



Graham J. Howell
Port Talbot, Glamorgan, Wales



James J. Young
Edinburgh, Scotland.

Second



Peter B. London
Leigh-on-Sea, Essex.



Shirley V. M. Preston
Maidstone, Kent.



Ian Paton
Mitcham, Surrey.



Stanley G. Olson
Fostorp, Nygård,
Sweden.



Joseph Jones
Dudley, Worcestershire



Kyriacos J. Stavrinides
Limassol, Cyprus.

Year



Timothy B. Pope
Surbiton, Surrey.



Sheila Costello
Dublin, Eire.



Mel G. Peacock
Luton, Bedfordshire.



Reginald C. Platt
Dagenham, Essex



Royston E. Page
Bristol, Gloucestershire.

Feast of Tabernacles

Wonderful weather, outstanding sermons, and a warm, friendly spirit among the people combined to make this Feast of Tabernacles the finest ever in Great Britain.

Besides the regular services, there were other exciting activities for young and old. Pony rides provided much fun for the younger set. The adults enjoyed such events as the student fun show and a special showing of colored slides taken by Mr. McNair and Mr. Martin on their recent trip to the Middle East.

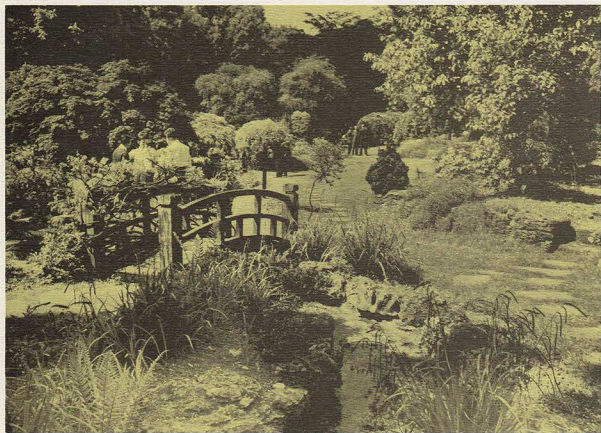




Over 450 people attended the Festival, coming from Great Britain and all over Europe.

A large marquee provided an adequate auditorium. A second marquee served as the dining room. Delicious, hot meals were served twice a day and everyone had an opportunity to meet and fellowship with the other brethren.





In this view you are looking north, taking in the quaint little footbridge with the various rare Japanese shrubs in the background.

Exotic Japanese Gardens



A quiet, peaceful scene near the winding stream in the Japanese Gardens. In the Spring this area bursts with color—particularly from the many varieties of azaleas as you see pictured here.



Below is the stream at one of its widest points, and you are looking toward Memorial Hall. Notice the array of blossoms and greenery that enhances the beauty of this peaceful scene. It makes an inviting and quiet place for students to study when the weather permits.





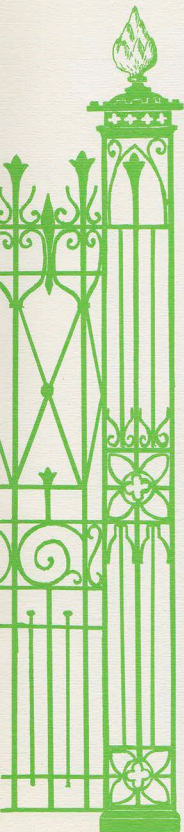
This is the main Men's Dormitory providing housing for some of the students. It is located only a short distance from Memorial Hall.



Here you see the Garage and Transportation Office (right), the Administration Building, and, to the rear, the Printing House. One of these, or other, responsibilities awaits the ambitious Ambassador who wishes to work his way through college.

THE 1962 FIRST YEAR

C L A S S



Drop Lane Gates. At present this is being used as Main Entrance to grounds.



LEFT:
Paul D. Anness
Brighton, Sussex.



CENTER:
Helen G. Burchill
Blacktown, N.S.W.,
Australia.



RIGHT:
Frank Brown
Orpington, Kent.
First Year Class President



Irene E. Black
Raphoe, Co. Donegal, Eire.



Alec M. W. Bailey
Rugby, Warwickshire.



James A. Cleary
Leamington Spa,
Warwickshire.



Joy Coupland
Neneaton,
Warwickshire.



Roy A. Davis
Birmingham,
Warwickshire.

First Year



LEFT:

Peter G. Edwards
Harlow, Essex

CENTER:

Alys M. G. Jones
Woking, Surrey

RIGHT:

Richard J. Frankel
Nilgiris, South India.



LEFT:

Edward J. Gore
Bermondsey, London.

CENTER:

Brian Evans
Newcastle-on-Tyne,
Northumberland.

RIGHT:

John A. Jewell
Cardiff, Wales



Mary Hollis
Leicester,
Leicestershire.



Students taking a break to listen to some of the many selections already acquired for the music library. The beautiful and rich tones are enhanced by stereophonic sound!



Graham A. Gaskell
Brisbane, Queensland,
Australia.



LEFT:
Michael J. Hustwait
Rushden,
Northamptonshire.



CENTER:
Valerie N. G. Jones
Woking, Surrey.



RIGHT:
Bill Stratton
Cromer, Norfolk.



LEFT:
David John Osgood
Whitchurch, Bristol.



CENTER:
Gordon Terblanche
Germiston, South Africa.



RIGHT:
Janice M. Steel
Cabramatta, N.S.W.,
Australia.



Hilary M. Massey
Watford, Hertfordshire.



Fred A. Lawson
Billingham on Tees,
Co. Durham.



"Let's have a song fest!" Group singing is always popular when Ambassador students gather together.

LEFT:

Calvert C. W. Howard
Belmont, Co. Offaly,
Eire.

CENTER:

Jill Coleman
Salisbury, Wiltshire.

RIGHT:

James S. McBride
Belfast, N. Ireland.



First Year



Shaun T. Seward
Maidstone, Kent.



David Townson
Bolton, Lancashire.



John A. Thomas
Kidderminster,
Worcestershire.



Doreen E. Wood
Liverpool,
Lancashire.



Harry Templeton
Caernarvonshire,
Wales.

Office Staff



Claudine Woodie
Chief Bookkeeper



Patricia Grantham
Secretary to Mr. McNair



Anita Preston
Receptionist, Switchboard Operator

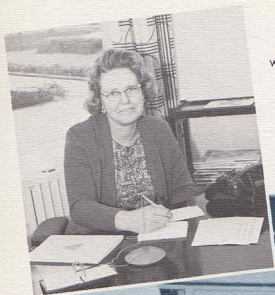


Seated at the desk in the right foreground is Ronald Howes, the only full-time employee in the office.
Standing by the post (at left center) is Desmond Seaton, Manager of the Office.

Kitchen Staff

Myrtle Horn

In charge of Kitchen Staff.
Warden over women students.



The Kitchen Staff: (left to right) Mmes. Seaton, Milner and Fricker are helped by many of the women students in preparing the delicious, wholesome meals served here at Ambassador College.



Gustav Olson

Mr. Olson manages the farm which supplies the college with fresh eggs and, in the future, beef, wheat, and milk!



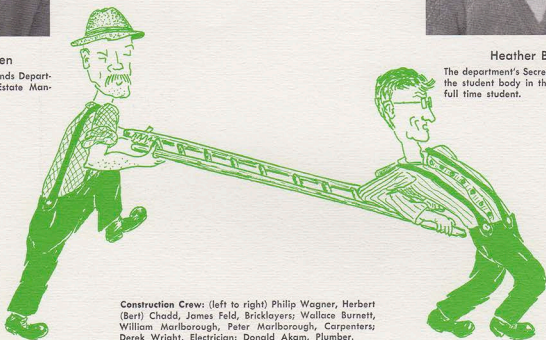


William A. Bowden
Director of Buildings and Grounds Department. Mr. Bowden was the Estate Manager under Lady Yule.

Buildings and...



Heather Bowden
The department's Secretary. Heather joined the student body in the second term as a full time student.



Construction Crew: (left to right) Philip Wagner, Herbert (Bert) Chadd, James Feld, Bricklayers; Wallace Burnett, William Marlborough, Peter Marlborough, Carpenters; Derek Wright, Electrician; Donald Akam, Plumber.





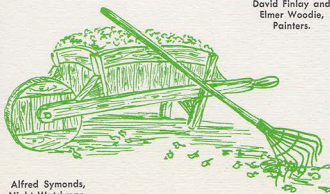
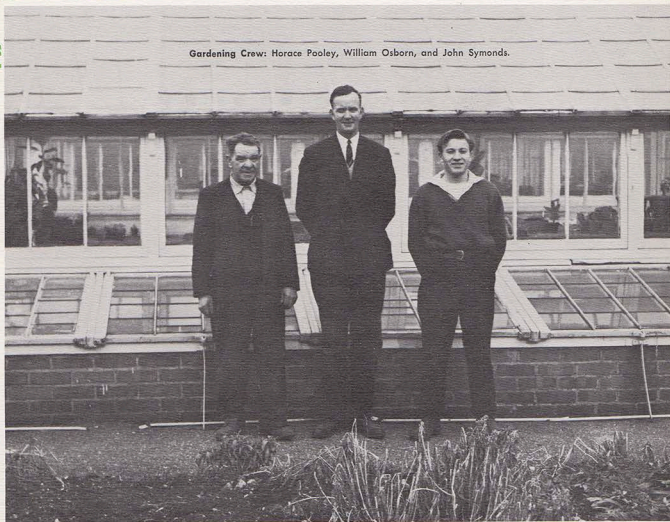
...Grounds Department

Mr. and Mrs. Howard Silcox

Mr. Silcox is Head Gardener.



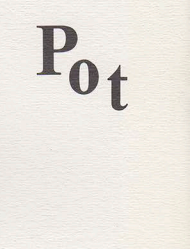
Gardening Crew: Horace Pooley, William Osborn, and John Symonds.



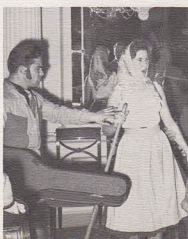
David Finlay and
Elmer Woodie,
Painters.



Alfred Symonds,
Night Watchman
and Sarge.

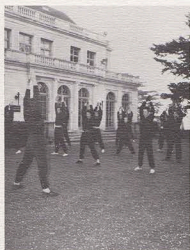


Pot





Pourri



THE 1962 ENVOY STAFF

(Left to right): B. Stratton, B. Cable-Scott, B. Chapman (Editor),
F. Lawson, Ian Paton, M. Bousfield (Sales).



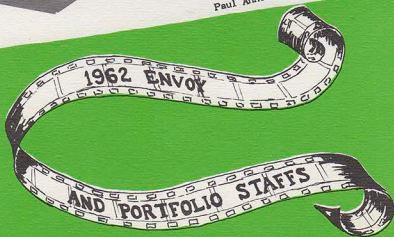
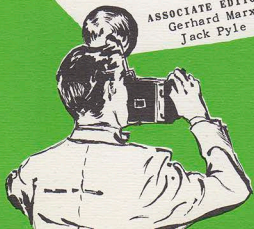
EDITOR
Robin Jones

ASSOCIATE EDITORS
Gerhard Marx
Jack Pyle

PHOTOGRAPHER
Bill Cable-Scott

REPORTERS

Edward Smith
James Young
Stanley Olson
Bill Coupland
Paul Anness
Ingrid Satermo
Michael Barlow
Frank Brown
Mike Bousfield
Shirley Preston





Night falls, ending another eventful day —
at AMBASSADOR COLLEGE, U. K. . . .

Australian Views



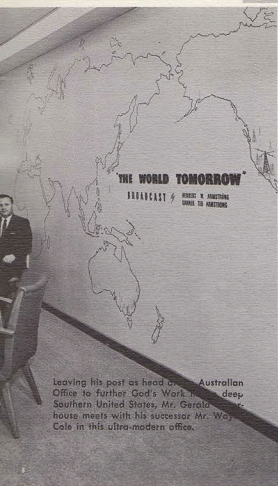
Dedicated and responsible men, working harmoniously, strive to advance the rapid spreading of God's message to all Australia.



Channeled through the Letter Answering and Mailing sections, hundreds of letters are answered weekly.



Organization and productivity are proofs of competent staff members.



Modern equipment — including this Multilith Duplicator — symbolizes the progress and development of the Australian Office.



An endless flow of work courses its way through the Australian Office in North Sydney.

Annual Conference

Two busy weeks of early January are part of the full lives of a group of God's servants as they converge on Pasadena for the 1962 Ministerial Conference. Concern for local items is mixed with the happy smiles of greetings and the joy of once again returning to the dignity and richness of Ambassador College. The air is filled with news of new developments, growth and experiences. Yet amidst the activity is the serious work of discussion, formulation and decision.

First Row (left to right): Mr. Norman A. Smith, Mr. Raymond C. Cole, Mr. Herman L. Hoeh, Mr. Garner Ted Armstrong, Mr. Herbert W. Armstrong, Dr. C. Paul Meredith, Mr. Roderick C. Meredith, Mr. Raymond F. McNair.

Second Row: Mr. Gerald Waterhouse, Mr. Bryce G. Clark, Mr. Charles V. Dorothy, Mr. Dean C. Blackwell, Mr. Albert J. Portune, Mr. Basil Wolverton, Dr. Clint Zimmerman, Dr. Benjamin L. Rea, Mr. Kenneth R. Swisher.

Third Row: Mr. R. Carlton Smith, Mr. Bill L. McDowell, Mr. John David Hammer, Mr. Hal W. Baird, Jr., Mr. Jimmy L. Friddle, Mr. George Meeker, Mr. Leslie L. McCullough, Mr. Allen D. Manteufel, Mr. L. Leroy Neff.

Fourth Row: Mr. David Lee Antion, Mr. Rager Foster, Mr. Dale Hampton, Mr. Ronald Kelly, Mr. David Jon Hill, Mr. Carl E. McNair, Mr. Richard Prince, Mr. H. Burk McNair.

Fifth Row: Mr. Billy I. Glover, Mr. Al Dennis, Mr. Selmer Hegvold, Mr. Alton B. Billingsley, Mr. Sidney Hegvold, Mr. A. R. Jantzen, Mr. James F. Kunz, Mr. Harold Jackson, Mr. Wilbur Berg, Mr. Frank J. McCrady, Mr. Lester McColm.

Missing This Year: Mr. C. Wayne Cole, Mr. Ronald L. Dart, Mr. Bob Hoops, Mr. Charles Hunting, Mr. Ernest Martin, Mr. Pedro Ortiguero, Mr. R. H. Roenspies.





First Row (left to right): Mrs. Clint Zimmerman, Mrs. David Lee Antion, Mrs. Norman A. Smith, Mrs. Garner Ted Armstrong, Mrs. Herbert W. Armstrong, Mrs. C. Paul Meredith, Mrs. Roderick C. Meredith, Mrs. Raymond F. McNair.

Second Row: Mrs. R. Carlton Smith, Mrs. Charles V. Dorothy, Mrs. Dean C. Blackwell, Mrs. Bill L. McDowell, Mrs. Albert J. Portune, Mrs. Jimmy L. Friddle, Mrs. George Meeker, Mrs. Allen D. Manteufel, Mrs. Kenneth R. Swisher.

Third Row: Mrs. Bryce G. Clark, Mrs. Roger Foster, Mrs. Ronald Dart, Mrs. David Jon Hill, Mrs. Ronald Kelly, Mrs. Carl E. McNair, Mrs. Leslie McCullough, Mrs. Leroy Neff, Mrs. Lester McColm.

Fourth Row: Mrs. Billy Glover, Mrs. Al Dennis, Mrs. Selmer Hegvold, Mrs. Alton B. (Don) Billingsley, Mrs. Sidney Hegvold, Mrs. James F. Kunz, Mrs. Wilbur Berg, Mrs. H. Burk McNair.

Missing Individuals: Mrs. C. Wayne Cole, Mrs. Raymond Cole, Mrs. Ronald L. Dart, Mrs. John D. Hammer, Mrs. Dale Hampton, Mrs. Herman Hoeh, Mrs. Bob Hoops, Mrs. Charles Hunting, Mrs. Harold Jackson, Mrs. A. R. Jantzen, Mrs. Ernest Martin, Mrs. Pedro Ortiguero, Mrs. Richard Prince, Mrs. Benjamin L. Rea, Mrs. R. H. Roenspies, Mrs. Basil Wolverton, Mrs. Clint Zimmerman.

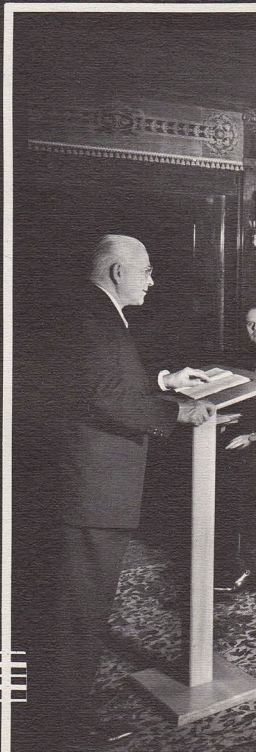


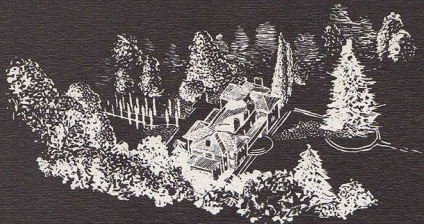
Growing in Knowledge

The Ambassador College Graduate School of Theology—its purpose, to provide an able and effective ministry to proclaim Christ's Gospel of the Kingdom of God by preaching, by radio and television, and by the power of the printed word, to all nations, and to pastor local Churches of God.



A graduate school class in session in the Rosewood Room of Ambassador Hall with Mr. Armstrong in charge. Ministerial personnel receive a large portion of their training in the field under the direction of senior ministers and are privileged to return to the campus every few years for a semester of concentrated theological instruction.







Men's lounge room in basement of Manor del Mar—an atmosphere conducive to study, conversation or moments of relaxation. A typical evening will find a number of young men engrossed in the pages of popular news magazines or discussing the latest in world events.

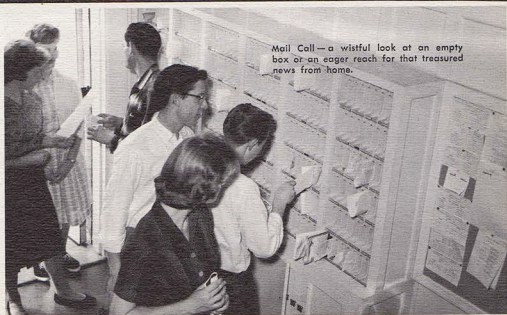


Picturesque wallpaper adds that feminine touch to warm, homey Mayfair. Industrious co-eds add personal decorations to their comfortable rooms. From this stylish second-floor abode, women students admire the towering Deadards and the green rolling lawn of the campus. The sprawling San Gabriel Mountains stretch into the distance beyond the busy city of Pasadena.

OUR HOME ON THE CAMPUS

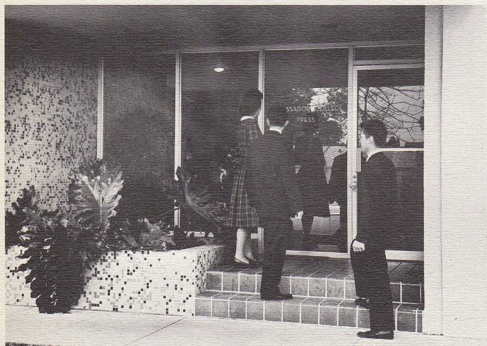


Meal time at Mayfair is an assembly line affair.



Mail Call—a wistful look at an empty box or an eager reach for that treasured news from home.

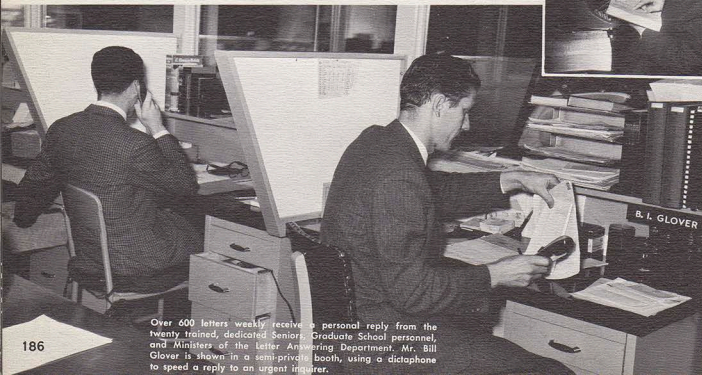
AMBASSADOR COLLEGE PRESS



This ultra-modern entrance greets every visitor with an open welcome.



Bible, dictionary and typewriter are the effective tools used by Mr. Allen Dexter to thoroughly, carefully answer the questions and problems of an inquiring radio listener.



Over 600 letters weekly receive a personal reply from the twenty trained, dedicated Seniors, Graduate School personnel, and Ministers of the Letter Answering Department. Mr. Bill Glover is shown in a semi-private booth, using a dictaphone to speed a reply to an urgent inquirer.

Dedicated to service, burgeoning with growth—the Ambassador College Press Building is a focal point of fervent activity. From this buzzing center of employment over 5 million pieces of literature yearly—magazines, booklets and articles—are rushed to all parts of the globe. Printing, addressing, labeling, packing and mailing are the order of the day.



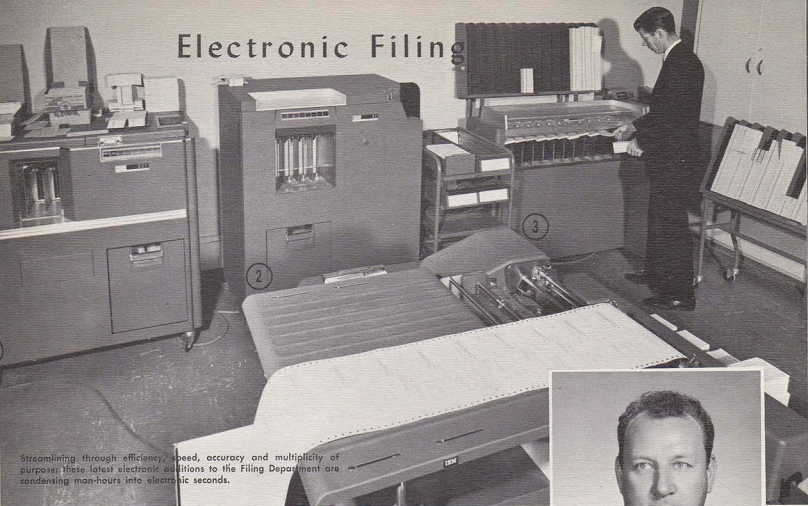
The rapidly growing enrollment of 60,000 students keeps the Correspondence Course Department on a dizzying cycle of sending lessons, testing and grading. Careful record is kept of each student's progress and new lessons are continually being added.

Each of the 25,000 weekly letters is read and channelled efficiently to the appropriate department by Mail Reading Department. Using simplified codes, they indicate on each letter the literature requested. Typists quickly address return envelopes, the main office encloses the proper booklet or article, sending them on their way to the post office often within 24 hours of the request.



A question? An upperclassman among fifty employed in the Mail Reading Department seeks advice from Supervisor Gary Sefcak.

Electronic Filing



Streamlining through efficiency, speed, accuracy and multiplicity of purpose, these latest electronic additions to the Filing Department are condensing man-hours into electronic seconds.



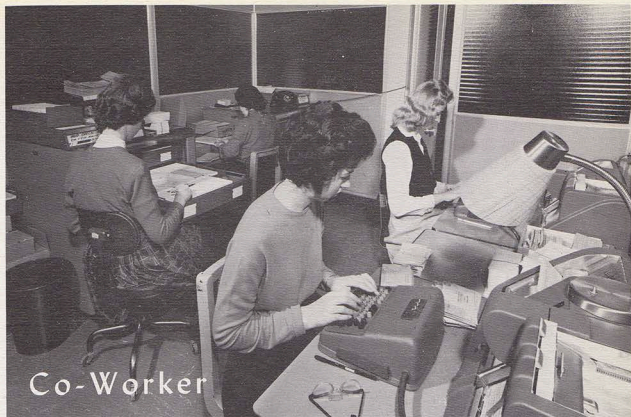
HUGH MAUCK

Secretary-Treasurer of The Radio Church of God...
Manager of Mailing Office, Circulation Manager, U. S.
edition of The PLAIN TRUTH... A.B., Ambassador
College.



A Third of a Million

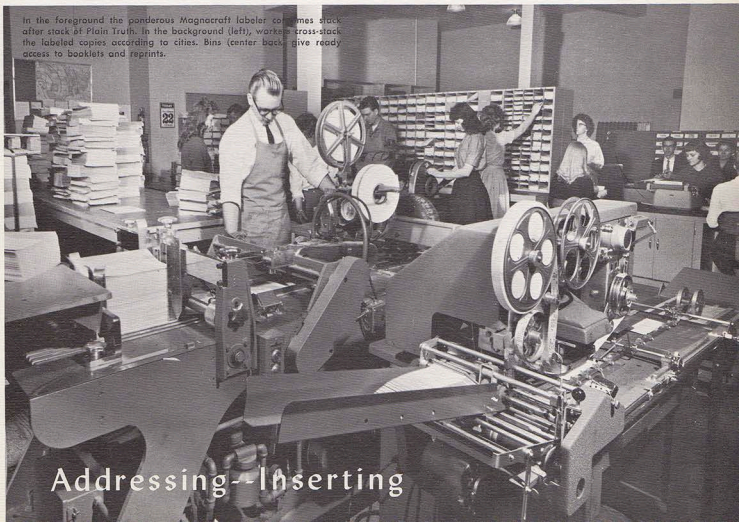
A month's issue but sent out in days with
the aid of Magnacraft addressing equipment.



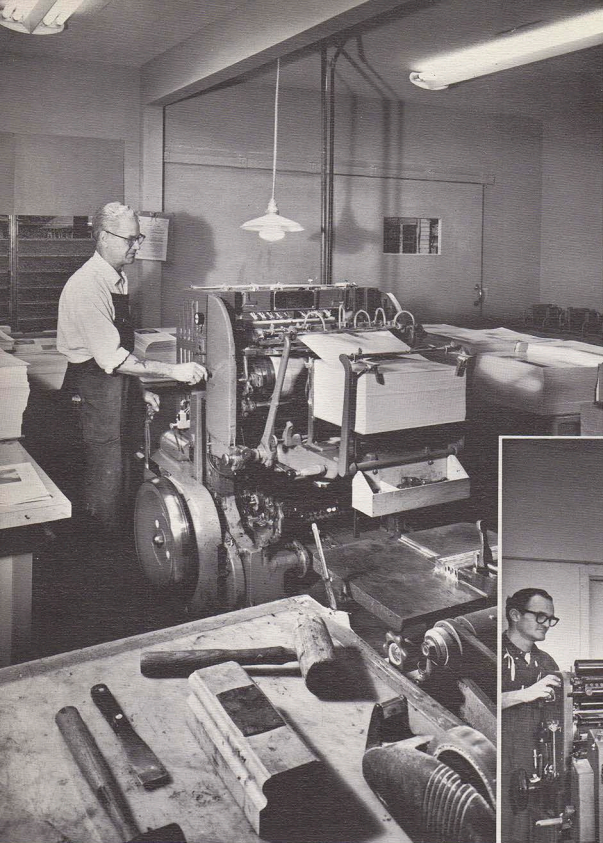
Co-Worker

Each donation is carefully tabulated on punched cards which are in turn used to produce receipts in an electronic printer. Receipts will then be inserted and sealed automatically in window envelopes by an inserting machine.

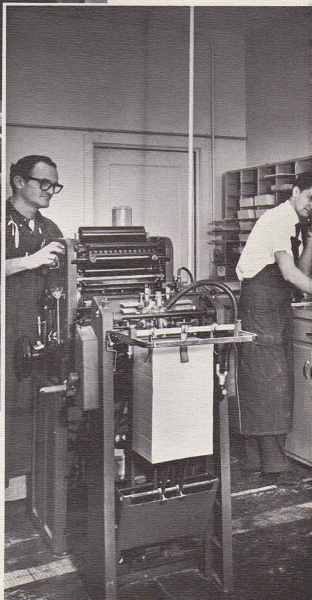
In the foreground the ponderous Magnacraft label comes stacked after stack at Plain Truth. In the background (left), workers cross-stack the labeled copies according to cities. Bins (center-back) give ready access to booklets and reprints.



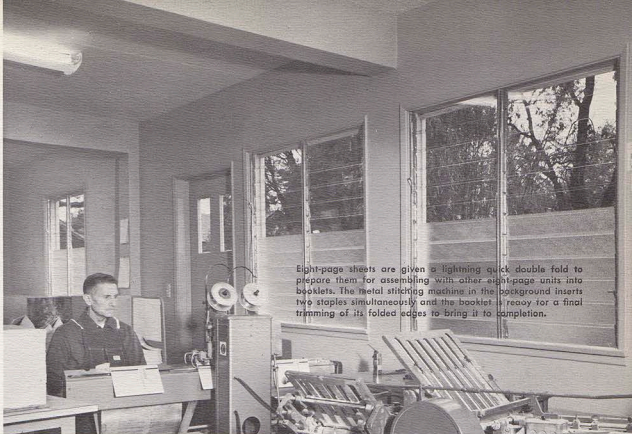
Addressing-Inserting



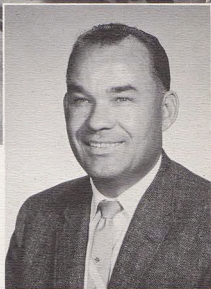
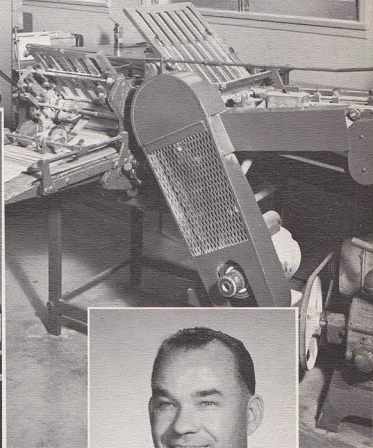
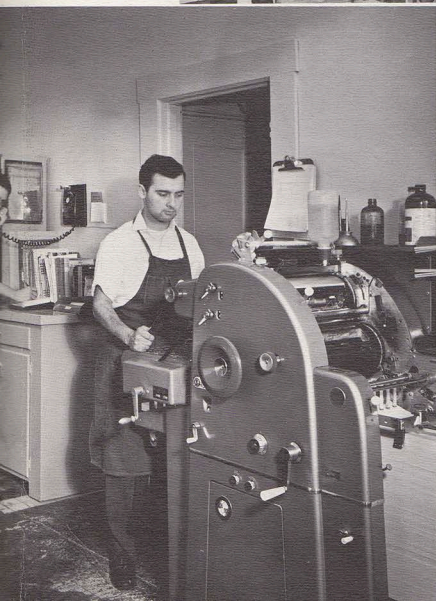
One of two vertical presses that print directly from metal type, rubber plates or zinc etched plates. Booklets, the Good News, and an annual letter to the entire mailing list are among items handled on these presses.



A vitally important part of Ambassador Press—the Offset Printing Department excels in the latest photographic and printing equipment. Reprint articles, foreign language publications, the Portfolio and a host of other items proceed from these versatile machines.



Eight-page sheets are given a lightning quick double fold to prepare them for assembling with other eight-page units into booklets. The metal stitching machine in the background inserts two staples simultaneously and the booklet is ready for a final trimming of its folded edges to bring it to completion.



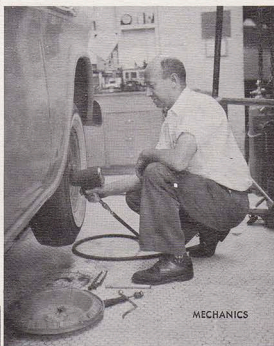
JAMES A. GOTT
Director of Printing.

Beehive of Activity

Returning toward the Library from our tour of the Press Building, we pass the shop area and other departments where a variety of duties are performed in keeping Ambassador College productive, useful and beautiful. Rather than interrupt our hundreds of employees, let us catch a few glimpses of the work they do.



CABINETMAKERS



MECHANICS



JANITORIAL



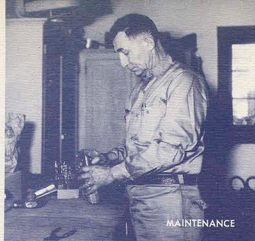
SECRETARIAL



CAMPUS INFIRMARY



PAINTERS



MAINTENANCE



TRANSPORTATION



LEGAL



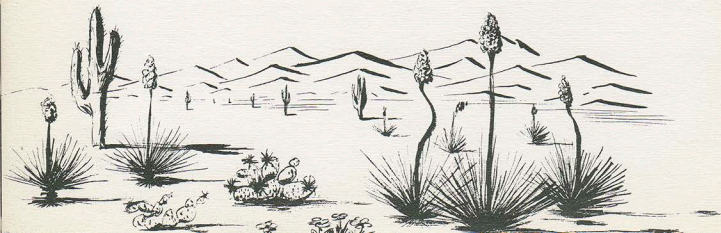
KITCHEN



NEWS BUREAU



Congregated on granite boulders of the recently completed Mediterranean style garden is our staff of gardeners whose labors are producing here at Ambastador a foretaste of a world to come where even the deserts shall blossom forth in beauty.



Gardening is our Pleasure

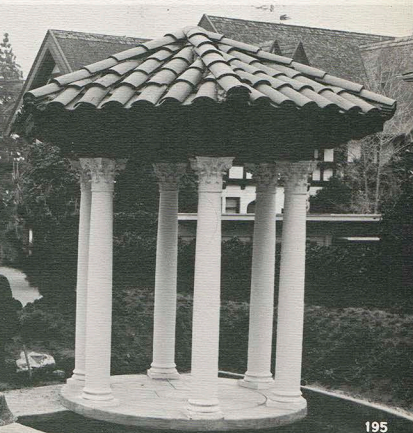


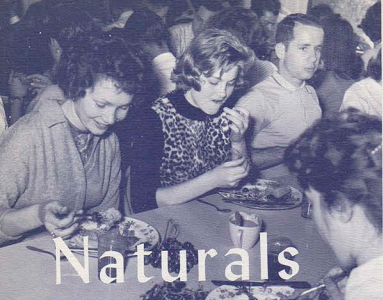
A private tour for a botany class conducted in person by Mr. Gardener, Head of the Gardening Department.

Thirty acres of spacious grounds—a garden spot in the midst of a metropolitan area of over five million. Many diligent hours of dressing and caring for the lawns and shrubbery have prepared the campus for your pleasure.



An Italian garden from paper plans—Boulders from the nearby San Gabriel Mountains; concrete, electrical conduits, pumps and plumbing to form an underground web; shrubs and flowering plants artistically arranged; all combine to produce a touch of Mediterranean splendor.



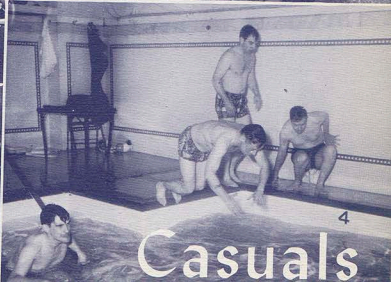
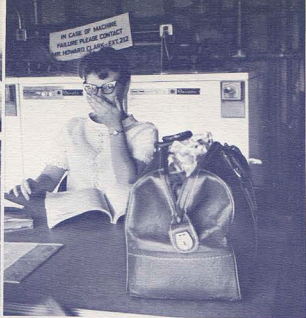


Naturals

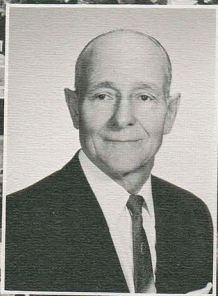


and





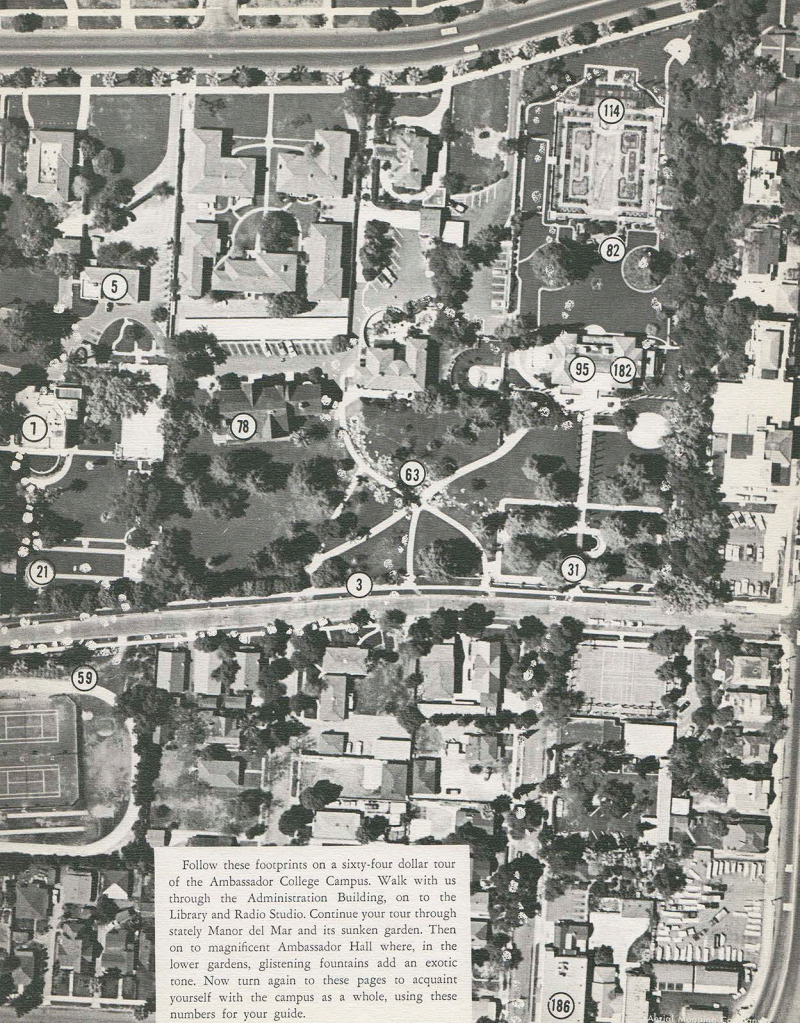
COLLEGE DIRECTORY



WILLIAM HOMBERGER

Chief Custodian of Buildings.

Known affectionately to the students as "Uncle Bill," Mr. Homberger has been indispensable on the campus as janitor and all-around fix-it man since its beginning in 1947. His knack for making children enjoy led to an annual chili party for the high school student body, an event that has now given way to Open House at Manor del Mar where his recipe is still heeded.



Follow these footprints on a sixty-four dollar tour of the Ambassador College Campus. Walk with us through the Administration Building, on to the Library and Radio Studio. Continue your tour through stately Manor del Mar and its sunken garden. Then on to magnificent Ambassador Hall where, in the lower gardens, glistening fountains add an exotic tone. Now turn again to these pages to acquaint yourself with the campus as a whole, using these numbers for your guide.



PRESENTING—for your amusement and enjoyment, another side of campus life—snatches and patches of Ambassador activity. At work or play, on campus or off, Ambassador students greet each new situation with real vigor and enthusiasm. These "unguarded" moments show the spontaneity that makes college life so rewarding.



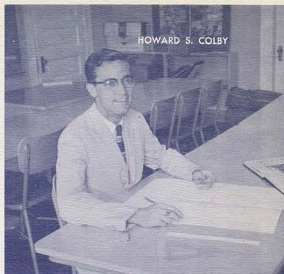




The Making of an ENVOY

This ENVOY is a yearly publication of Ambassador College, capturing events of the past year and preserving them for our memory in the years to come.

A thematic format in mind, the Editor-in-Chief begins preliminary "dummy" layouts, upon which all plans depend.



HOWARD S. COLBY

CHARLENE S. DOUGLAS

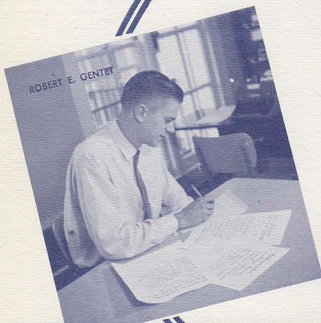


In a flurry of pencil shavings and ink spots, the staff artists search out and produce appropriate art to add interest and thematic unity to the ENVOY.

WILLIAM S. SCHULER



Page headings are hand set with our own type while other copy is sent to nearby Holly Type.



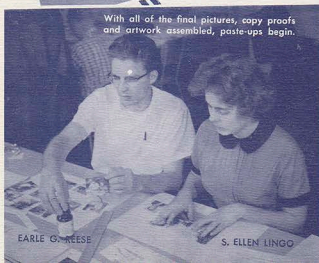
ROBERT E. GENTET

A final proofing check to see that all is in order; next stop, our yearbook publishers, Mirro Graphic in Glendale.



KENNETH C. HERRMANN

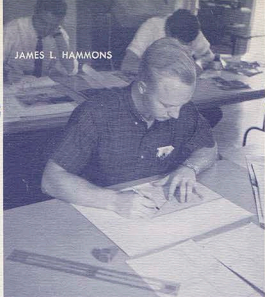
With all of the final pictures, copy proofs and artwork assembled, paste-ups begin.



EARLE G. REESE

S. ELLEN LINGO

JAMES L. HAMMONS



Full scale dummies and layouts are prepared indicating position and content of pictures, captions, write-ups, headings and art.

Copy writers work side-by-side with the layout crew to compose all necessary captions, headings, and write-ups.

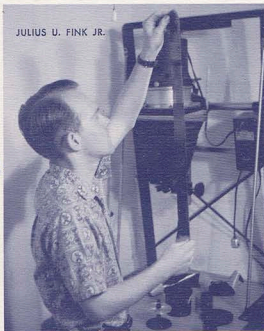
LARRY G. ALTERGOTT

CHARLENE D. DIEM

BETTY G. JOHNSON



JULIUS U. FINK JR.



Top quality pictures are developed and printed with the care and skill of a professional by our own staff.

Assignments in hand, our photographer busily prepares for an afternoon of accomplishment.



RITA K. BUTLER



A preview with a smile!

The Staffs of the 1962 ENVOY in Bricket Wood and Pasadena would like to express their appreciation for the assistance of all who contributed to the success of this venture. First, to Ambassador College for the privilege of designing and producing their yearbook; then to our thousands of subscribers for their growing support; next, to our major contributors whose experience and patience proved invaluable assets:

S. K. Smith	Cover Production
Mirro-Graphic Division	Printing and Binding
of American Yearbooks	Copy Setting
Holly Type	Portraits in U. S.
Robert's Photographer	Portraits in England
T. H. Greville	

And finally, to the dozens of individuals who contributed photographs, portraits, art and information without acknowledgment here and in many cases without monetary reward for their services.

Introducing...

the Faculty and Administration

A	G	M	R
Abbott, Dr. Kenneth 138	Germano, Michael P. 42	Mann, Annie M. 79	Rader, Stanley R. 34
Aparcian, Dibar K. 38	Gott, James A. 190	Marcen, Camille 36	Rea, Dr. Benjamin L. 136
Armstrong, Garner Ted 32	H	Martin, Ernest L. 137	Reed, Harold J. 39
Armstrong, Herbert W. 28	Herrmann, Kenneth C. 32	Martin, Lucy H. 33	Reiman, Milton 29
Armstrong, Loma D. 28	Hoeh, Herman L. 33	Marx, Gerhard O. 141	Reiner, Russell A. 39
Armstrong, Karen 35	Holyoak, Harry W. 138	Mattson, Vern R. 34	S
B	Homburger, William 193	Mauck, Hugh 188	Shaw, Geoffrey E. 138
Bicker, Willis J. 42	Horn, Myrtle 171	McNair, Raymond F. 137	Silcox, Howard 173
Boraker, Robert C. 141	Hughes, Marjorie 42	Meredith, Dr. C. Paul 29	Smith, Norman 6
Bowden, William A. 172	Hunting, Charles F. 137	Meredith, Roderick C. 33	Stavrinides, K. 138
Buzzard, Anthony F. 43	I	Michel, Bernell 41	T
C	Inglis, Frank 42	Michel, Gene M. 34	Torrance, Lynn E. 38
Czornyj, Dr. Iwan 38	J	N	V
D	Jones, Shirley A. 140	Neff, L. Leroy 40	Van der Veer, Velma 37
Davies, J. Graham 41	K	Neitsch, Robert E. 41	W
Dorothy, Charles V. 38	Klammer, Erhard 41	O	Wainwright, David P. 141
E	L	Owen, Dr. E. H. 43	Walker, Leon 141
Eickhoff, Jessie 43	Lochner, Floyd O. 39	P	Wells, James 141
Enmett, Janet 35		Pestana, John G. 43	Wesbrook, Walter K. 37
Elliot, Jack R. 32		Pfund, Kemmer 35	Williams, Dorothy 37
Erttinger, Leon 36		Portune, Albert J. 40	Woffard, Donald G. 40
Erttinger, Nouvart C. 36		Preston, Anita 170	Wolverton, Basil 29
			Woodie, Claudine 170

Students

A	C	E	H
Abraham, L. 65	Cable-Scott, W. F. 157	Eastburn, W. R. 49	Hainz, J. G. 101
Albert, D. J. 64	Campbell, G. H., Jr. 66	Edelbach, I. M. 69	Hayley, J. L. 151
Alexander, P. H. 46	Chapman, B. R. 150	Edwards, P. G. 167	Halpain, D. L. 68
Altergott, L. G. 96	Clark, H. A. 66	Eldred, E. A. 100	Hammons, J. E. 68
Ames, G. L. 96	Clark, R. G. 46	Elliot, E. D. 100	Hans, D. L. 101
Anderson, K. 96	Cole, L. W. 46	Ellis, W. H. 49	Hanson, R. G. 102
Anness, P. D. 166	Coleman, J. 169	Evanow, M. N. 100	Hanson, S. J. 102
Armstrong, K. S. 96	Costello, S. 159	Evans, B. J. 167	Hanway, D. 102
Arvidson, G. E. 65	Coulter, F. R. 98	Evans, R. L. 101	Hargrove, V. F. 50
Aspens, V. J. 96	Coupland, J. 166	Evans, R. L. 101	Hawkins, J. R. 50
Atkinson, D. M. 96	Coupland, W. T. 157	Freeland, W. G. 101	Haynes, S. D. 102
B	Cox, C. J. 98	Freibergs, G. 157	Hedge, D. S. 102
Bailey, A. M. W. 166	Cox, C. D. 98	F	Hegveld, P. I. 102
Bailey, L. R. 96	Cox, V. L. 48	Fahey, R. E. 101	Herzog, L. M. 102
Bailey, M. J. 96	Craig, A. R. 48	Fink, J. U., Jr. 101	Hesket, T. D. 102
Baird, B. J. 64	Crain, C. R. 99	Flatt, L. P. 47	Hobertz, H. R. 103
Baker, J. L. 96	Crittenden, M. E. 99	Flatt, M. J. 47	Hobertz, L. W. 50
Bansemmer, M. L. 96	Crosswell, G. R. 98	Frankel, R. J. 167	Holladay, R. O. 71
Barlow, M. W. 157	Cunningham, J. C. 67	Franklin, C. D. 69	Hollis, M. 167
Barnes, A. A. 96	Curtis, K. K. 99	Freeland, W. G. 101	Horne, F. G. 70
Barnett, J. V. 151	D	G	Horton, J. S. 70
Barrett, G. J. 96	Dahlgren, D. A. 99	Gaskell, G. A. 167	Houghtaling, M. S. 103
Bartles, S. E. 96	Dane, S. L. 99	Genter, R. E. 49	Howard, C. C. W. 169
Baxter, P. A. 97	Daniels, G. 200	Goodson, J. A. 101	Howell, G. J. 158
Bedford, D. R. 65	Dankenbring, W. F. 67	Goodwin, R. E. 68	Huffman, J. A. 103
Beruzzi, R. F. 97	Davies, J. 66	Gore, E. J. 167	Hufnberger, D. G. 103
Bicker, W. J. 64	Davis, F. W. 99	Gould, C. T., Jr. 48	Hunter, C. R. 103
Bierd, D. L. 97	Davis, H. M., Jr. 67	Goyette, A. M. 51	Hunter, K. M. 103
Bishop, G. 65			Hustwait, M. J. 168
Black, I. E. 166			
Blackwell, L. 46			
Blackwell, T. H. 47			
Bonnett, L. R. 47			
Boone, C. L. 97			
Boose, W. C. 97			
Bousfield, M. A. 157			
Bowden, H. 172			
Bowden, H. 172			
Boxley, M. 97			
Bradford, W. C. 97			
Bradley, S. A. 97			
Bramhall, G. A. 98			
Brown, F. 166			

J
James, L. J. 103
Jantz, M. D. 48
Jebens, W. O. 103
Jennings, G. A. 71
Jewell, J. A. 167

Johannesson, R. C.	51
Johnson, B. G.	103
Johnson, J. H.	103
Johnson, L. E.	103
Jones, A. M. G.	167
Jones, J. C.	103
Jones, J. A.	104
Jones, J.	139
Jones, R. G.	130
Jones, V. N. G.	168
Judy, C. M.	104

K

Kellers, F. C.	70
Kelley, B. H.	70
Kemnitz, G. H.	104
Kiser, N. M.	149
Kobernat, C. M.	104

L

Landing, A. W.	104
Lange, B. L.	104
Lavender, T. D., Jr.	70
Lawson, F. A.	168
Lay, R. L.	104
Leonard, L. A.	104
Levy, E. M.	104
Lindgren, A. E.	104
Lindly, D. D.	104
Lingo, S. E.	104
Lingso, S. E.	104
Livengood, L. A.	104
Lochner, P. L.	105
Locke, D. K.	105
London, P. B.	158
Long, D.	71
Longwill, D. R.	51
Loveland, L. A.	105
Luker, D. G.	73

M

Major, D. L.	105
Marling, N. G.	105
Marshall, E. A.	73
Marshall, J. E.	105
Martin, J. L.	50
Marx, C. O.	150
Massey, J. A.	105
Massey, H. M.	168
Mattson, K. J.	106
McBride, J. S.	169
McFarland, H. D., Jr.	108
McGill, M. L.	52
McHenry, E. M.	72
McMichael, C. S.	51
McNeil, R. D.	106

Meadors, D. A.	106
Merager, A. G.	106
Meredith, M. H.	53
Merz, G. E.	106
Miller, R. C.	53
Miller, W. C.	106
Mills, D. H.	52
Mokarow, A. C.	52
Murphy, S. K.	106

N

Neitsch, R. E.	106
Nestor, C. A.	106
Nettel, B. L.	106
Nichols, P.	157

O

Ochs, B. A.	106
Oden, B. Y.	72
Olsen, J. M.	107
Olson, S. G.	158
Osgood, D. J.	168

P

Page, R. E.	159
Page, R. S.	107
Paton, I. E.	158
Patterson, P. A.	107
Peacock, M. E.	159
Pease, E. M.	107
Pebworth, D.	150
Petrissor, J. W.	107
Petry, R. J.	72
Pfund, J.	72
Pifer, G. D.	107
Platt, R. C.	159
Pope, T. B.	159
Porter, D. W.	107
Portune, J. E.	73
Prather, G. D.	107
Pratt, M. J.	108
Preston, S. V. M.	158
Prunkard, D. L.	108
Pyle, D. E.	108
Pyle, J. M.	151

R

Raetz, J. E.	108
Redus, J. D.	108
Reedy, W. R.	108
Reese, E. G.	72
Rhodes, P.	108
Riegel, P. J.	108
Riley, R. R.	109
Ritke, J. M.	109
Robertson, J. R.	53

Robinson, L. A.	109
Roenspies, D. R.	109
Rothery, A. M.	109
Rowell, M. E.	109
Royer, P. S.	73
Rubin, J. R.	74
Rudometkin, J. J.	109
Rupp, B. O.	109
Russell, J. C.	109
Russell, M.	75
Ruxton, R. L.	75

S

Salmon, R. L.	109
Sanderson, J. M.	157
Sandvold, C. B.	74
Satermo, I. E.	157
Saward, S. T.	169
Scheffer, D. A.	109
Schnee, F.	109
Schroeder, D. D.	52
Schroeder, J. D.	74
Schroeder, J. R.	74
Schuler, W. S.	74
Seaton, D.	158
Sefcak, J. F.	75
Sell, I. L.	110
Sell, L. E.	110
Sharp, W. R.	110
Shepard, C. Y.	110
Shepard, S. L.	110
Shrewsbury, E. R.	110
Shrewsbury, W. H.	75
Silver, M. F.	110
Simmons, J. J.	110
Simpson, D. E.	110
Smith, E.	151
Smith, G. G.	76
Smith, L. N.	53
Smith, T. A.	110
Speers, O. J.	110
Stamps, A. E.	111
Stavrinides, K. J.	159
Steensen, J. D.	111
Steel, J. M.	168
Steep, C. D.	53
Steep, R. F.	55
Stephens, R. E.	76
Stough, W. H.	111
Stratton, B.	168
Sturman, P. A.	111
Summers, D. E.	111
Swanson, W. H.	111
Sweez, A. L.	111
Sylvest, F.	201

T

Templeton, H.	169
Terblanche, G.	168
Tharp, K. O.	111
Thomas, F. L.	111
Thomas, J. A.	169
Tisch, B. J.	111
Tobias, J. D.	111
Topash, A. G.	112
Toussaint, W. T.	112
Townson, D.	169
Travis, C. F.	76
Travis, H. L.	112
Tucker, R. F.	54

U

Untiedt, J. D.	76
----------------	----

V

Van Landuyt, L.	112
Vorhes, C. P.	112

W

Waian, W. H.	76
Walden, L. M.	112
Walter, E. M.	54
Walter, R. M.	54
Wann, A. C.	112
Ward, R. W.	55
Waterhouse, D. E.	112
Welch, D. M.	112
Wendzel, E. R.	112
West, R. W.	112
Westby, K.	76
White, G. V.	113
White, S. G.	112
Wilcox, M. E.	113
Wiley, V. K.	113
Wilkins, C. J. A.	151
Williams, B. J.	113
Williams, E. L.	77
Williams, M. A.	55
Wilson, D. R.	55
Winner, W. D.	55
Witte, G. K.	113
Wood, D. E.	169

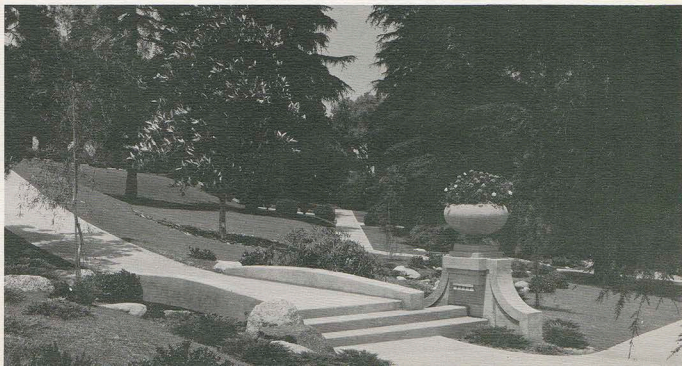
Y

Young, J. J.	158
--------------	-----

Z

Zachary, M. M.	77
Zarf, P. J.	77
Ziska, G. A.	113
Zlab, J. K.	113

A parting
glimpse of
Ambassador's
tailored
lawns.



Autographs

